

**TOPORS Antibody (clone 5G11)**  
**Mouse Monoclonal Antibody**  
**Catalog # ALS13461****Specification**

---

**TOPORS Antibody (clone 5G11) - Product Information**

Application	WB, IHC-P, IF, E
Primary Accession	<a href="#">Q9NS56</a>
Reactivity	Human
Host	Mouse
Clonality	Monoclonal
Calculated MW	119kDa KDa
Dilution	WB~~1:1000 IHC-P~~N/A IF~~1:50~200 E~~N/A

**TOPORS Antibody (clone 5G11) - Additional Information****Gene ID** 10210**Other Names**

E3 ubiquitin-protein ligase Topors, 6.3.2.-, SUMO1-protein E3 ligase Topors, Topoisomerase I-binding RING finger protein, Topoisomerase I-binding arginine/serine-rich protein, Tumor suppressor p53-binding protein 3, p53-binding protein 3, p53BP3, TOPORS, LUN, TP53BPL

**Reconstitution & Storage**

Store at -20°C. Aliquot to avoid freeze/thaw cycles.

**Precautions**

TOPORS Antibody (clone 5G11) is for research use only and not for use in diagnostic or therapeutic procedures.

**TOPORS Antibody (clone 5G11) - Protein Information****Name** TOPORS**Synonyms** LUN, TP53BPL**Function**

Functions as an E3 ubiquitin-protein ligase and as an E3 SUMO1-protein ligase. Probable tumor suppressor involved in cell growth, cell proliferation and apoptosis that regulates p53/TP53 stability through ubiquitin-dependent degradation. May regulate chromatin modification through sumoylation of several chromatin modification-associated proteins. May be involved in DNA damage-induced cell death through IKBKE sumoylation.

**Cellular Location**

Nucleus. Nucleus, PML body. Note=Localizes to discrete nuclear foci which partly overlap with PML

nuclear bodies Targeted to PML nuclear bodies upon DNA damage

#### Tissue Location

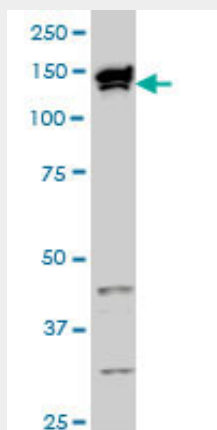
Expressed at highest levels in testis and at lower levels in adrenal gland, bone marrow, brain, colon, heart, kidney, liver, muscle, ovary, pancreas, placenta, prostate, skeletal muscle, skin, small intestine, spleen, stomach, testis, thymus, thyroid and uterus. Expressed in the alveolar epithelium of the lung. Expression is commonly decreased in colon adenocarcinomas and lung cancers

#### TOPORS Antibody (clone 5G11) - Protocols

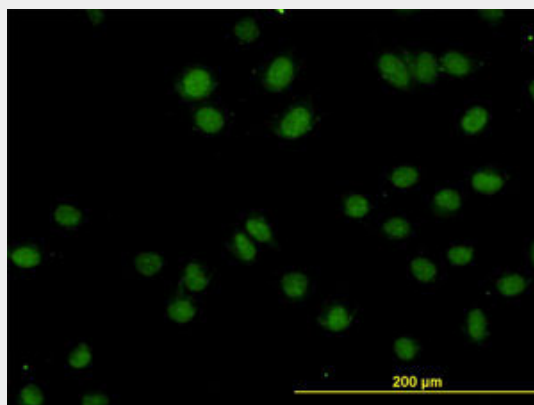
Provided below are standard protocols that you may find useful for product applications.

- [Western Blot](#)
- [Blocking Peptides](#)
- [Dot Blot](#)
- [Immunohistochemistry](#)
- [Immunofluorescence](#)
- [Immunoprecipitation](#)
- [Flow Cytometry](#)
- [Cell Culture](#)

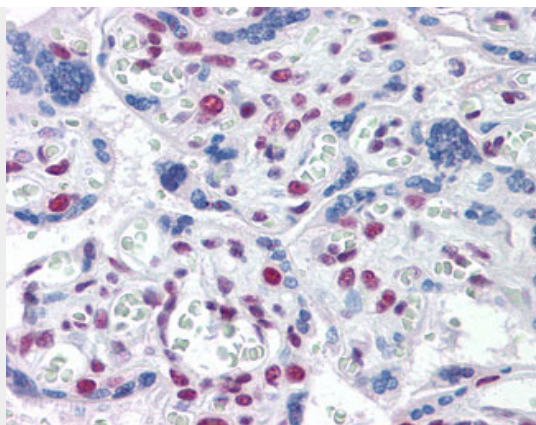
#### TOPORS Antibody (clone 5G11) - Images



TOPORS monoclonal antibody clone 5G11 Western blot of TOPORS expression in HeLa NE.



Immunofluorescence of monoclonal antibody to TOPORS on HeLa cell (antibody concentration 10 ug/ml).



Anti-TOPORS antibody IHC of human placenta.

#### **TOPORS Antibody (clone 5G11) - Background**

Functions as an E3 ubiquitin-protein ligase and as an E3 SUMO1-protein ligase. Probable tumor suppressor involved in cell growth, cell proliferation and apoptosis that regulates p53/TP53 stability through ubiquitin-dependent degradation. May regulate chromatin modification through sumoylation of several chromatin modification-associated proteins. May be involved in DNA damage- induced cell death through IKBKE sumoylation.

#### **TOPORS Antibody (clone 5G11) - References**

Haluska P. Jr.,et al.Nucleic Acids Res. 27:2538-2544(1999).  
Chu D.,et al.J. Biol. Chem. 276:14004-14013(2001).  
Humphray S.J.,et al.Nature 429:369-374(2004).  
Zhou R.,et al.Gene 235:93-101(1999).  
Rasheed Z.A.,et al.Exp. Cell Res. 277:152-160(2002).