

NEFH / NF-H Antibody (clone NF-05)
Mouse Monoclonal Antibody
Catalog # ALS13469**Specification**

NEFH / NF-H Antibody (clone NF-05) - Product Information

Application	WB, IHC-P, E, IHC-F
Primary Accession	P12036
Reactivity	Human, Rat, Pig
Host	Mouse
Clonality	Monoclonal
Calculated MW	112kDa KDa
Dilution	WB~~1:1000 IHC-P~~N/A E~~N/A IHC-F~~N/A

NEFH / NF-H Antibody (clone NF-05) - Additional Information**Gene ID** 4744**Other Names**

Neurofilament heavy polypeptide, NF-H, 200 kDa neurofilament protein, Neurofilament triplet H protein, NEFH, KIAA0845, NFH

Target/Specificity

The antibody NF-05 recognizes a nonphosphorylated epitope of neurofilament heavy protein (NF-H), a 210 kD intracellular structural protein of Intermediate Filament Proteins family. NF-H is mainly expressed in the central and peripheral nervous system ...

Reconstitution & Storage

Store at 4°C. Do not freeze.

Precautions

NEFH / NF-H Antibody (clone NF-05) is for research use only and not for use in diagnostic or therapeutic procedures.

NEFH / NF-H Antibody (clone NF-05) - Protein Information**Name** NEFH**Synonyms** KIAA0845, NFH**Function**

Neurofilaments usually contain three intermediate filament proteins: NEFL, NEFM, and NEFH which are involved in the maintenance of neuronal caliber. NEFH has an important function in mature axons that is not subserved by the two smaller NF proteins. May additionally cooperate with the neuronal intermediate filament proteins PRPH and INA to form neuronal filamentous networks (By

similarity).

Cellular Location

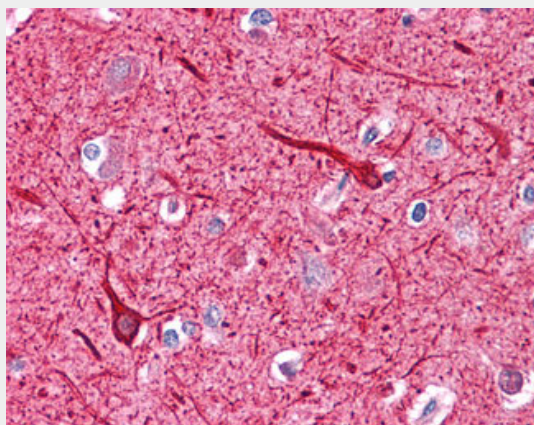
Cytoplasm, cytoskeleton. Cell projection, axon {ECO:0000250|UniProtKB:P19246}

NEFH / NF-H Antibody (clone NF-05) - Protocols

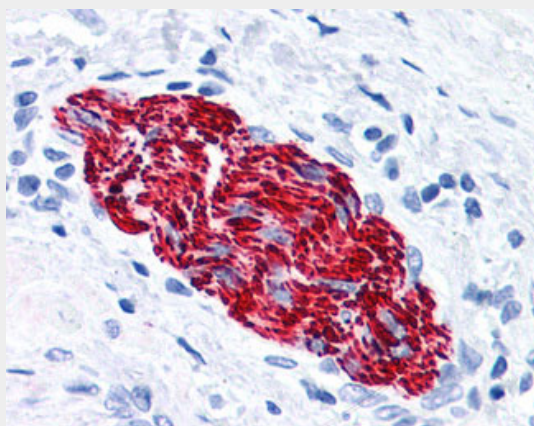
Provided below are standard protocols that you may find useful for product applications.

- [Western Blot](#)
- [Blocking Peptides](#)
- [Dot Blot](#)
- [Immunohistochemistry](#)
- [Immunofluorescence](#)
- [Immunoprecipitation](#)
- [Flow Cytometry](#)
- [Cell Culture](#)

NEFH / NF-H Antibody (clone NF-05) - Images



Anti-NEFH antibody IHC of human brain, cortex.



Anti-NEFH antibody IHC of human peripheral nerve.

NEFH / NF-H Antibody (clone NF-05) - Background

Neurofilaments usually contain three intermediate filament proteins: L, M, and H which are

involved in the maintenance of neuronal caliber. NF-H has an important function in mature axons that is not subserved by the two smaller NF proteins.

NEFH / NF-H Antibody (clone NF-05) - References

Lees J.F.,et al.EMBO J. 7:1947-1955(1988).
Zhu Y.,et al.Beijing Yi Ke Da Xue Xue Bao 31:531-531(1999).
Nagase T.,et al.DNA Res. 5:355-364(1998).
Ota T.,et al.Nat. Genet. 36:40-45(2004).
Dunham I.,et al.Nature 402:489-495(1999).