

AG3 / AGR3 Antibody (clone AGR3.1)
Mouse Monoclonal Antibody
Catalog # ALS13476**Specification**

AG3 / AGR3 Antibody (clone AGR3.1) - Product Information

Application	IHC
Primary Accession	Q8TD06
Reactivity	Human
Host	Mouse
Clonality	Monoclonal
Calculated MW	19kDa KDa

AG3 / AGR3 Antibody (clone AGR3.1) - Additional Information**Gene ID** 155465**Other Names**

Anterior gradient protein 3 homolog, AG-3, AG3, hAG-3, Breast cancer membrane protein 11, AGR3, BCMP11

Target/Specificity

The antibody AGR3.1 recognizes the epitope HETTDKNLS within the AGR3 (AG3) protein (19-20 kD); a secreted cytoplasmic protein which can serve as a marker of carcinogenesis.

Reconstitution & Storage

Short term 4°C, long term aliquot and store at -20°C, avoid freeze thaw cycles.

Precautions

AG3 / AGR3 Antibody (clone AGR3.1) is for research use only and not for use in diagnostic or therapeutic procedures.

AG3 / AGR3 Antibody (clone AGR3.1) - Protein Information**Name** AGR3**Synonyms** BCMP11, PDIA18**Function**

Required for calcium-mediated regulation of ciliary beat frequency and mucociliary clearance in the airway. Might be involved in the regulation of intracellular calcium in tracheal epithelial cells.

Cellular Location

Endoplasmic reticulum. Note=Found in the cytoplasm, which could include the endoplasmic reticulum

Tissue Location

Expressed in the lung, in the ciliated cells of the airway epithelium (PubMed:25751668).

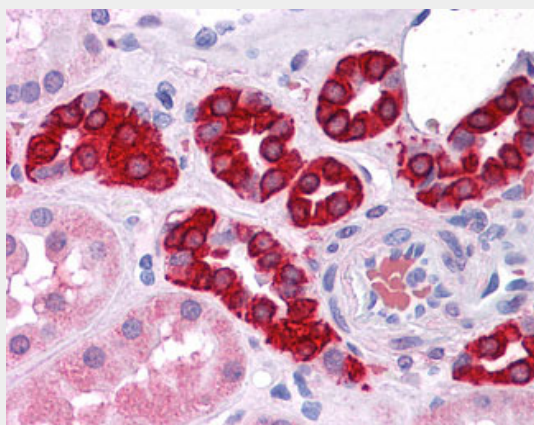
Expression increased with differentiation of airway epithelial cells (PubMed:25751668). Not detected in the mucous cells (PubMed:25751668). Expressed in ciliated cells in the oviduct (PubMed:26170690). Also detected in stomach, colon, prostate and liver (PubMed:25751668). Expressed in breast, ovary, prostate and liver cancer (PubMed:26170690). Expression is associated with the level of differentiation of breast cancer (at protein level) (PubMed:26170690).

AG3 / AGR3 Antibody (clone AGR3.1) - Protocols

Provided below are standard protocols that you may find useful for product applications.

- [Western Blot](#)
- [Blocking Peptides](#)
- [Dot Blot](#)
- [Immunohistochemistry](#)
- [Immunofluorescence](#)
- [Immunoprecipitation](#)
- [Flow Cytometry](#)
- [Cell Culture](#)

AG3 / AGR3 Antibody (clone AGR3.1) - Images



Anti-AGR3 antibody IHC of human kidney.

AG3 / AGR3 Antibody (clone AGR3.1) - References

Adam P.J., et al. J. Biol. Chem. 278:6482-6489(2003).
Clark H.F., et al. Genome Res. 13:2265-2270(2003).
Scherer S.W., et al. Science 300:767-772(2003).
Mural R.J., et al. Submitted (JUL-2005) to the EMBL/GenBank/DDBJ databases.
Zhang Z., et al. Protein Sci. 13:2819-2824(2004).