

TUBA4A / TUBA1 Antibody (clone 2E11)
Mouse Monoclonal Antibody
Catalog # ALS13511**Specification**

TUBA4A / TUBA1 Antibody (clone 2E11) - Product Information

Application	WB, IHC-P, IF, E, RNAi
Primary Accession	P68366
Reactivity	Human
Host	Mouse
Clonality	Monoclonal
Calculated MW	50kDa KDa
Dilution	WB~~1:1000 IHC-P~~N/A IF~~1:50~200 E~~N/A RNAi~~N/A

TUBA4A / TUBA1 Antibody (clone 2E11) - Additional Information**Gene ID** 7277**Other Names**

Tubulin alpha-4A chain, Alpha-tubulin 1, Testis-specific alpha-tubulin, Tubulin H2-alpha, Tubulin alpha-1 chain, TUBA4A, TUBA1

Reconstitution & Storage

Store at -20°C. Aliquot to avoid freeze/thaw cycles.

Precautions

TUBA4A / TUBA1 Antibody (clone 2E11) is for research use only and not for use in diagnostic or therapeutic procedures.

TUBA4A / TUBA1 Antibody (clone 2E11) - Protein Information**Name** TUBA4A**Synonyms** TUBA1**Function**

Tubulin is the major constituent of microtubules, a cylinder consisting of laterally associated linear protofilaments composed of alpha- and beta-tubulin heterodimers. Microtubules grow by the addition of GTP-tubulin dimers to the microtubule end, where a stabilizing cap forms. Below the cap, tubulin dimers are in GDP-bound state, owing to GTPase activity of alpha-tubulin.

Cellular Location

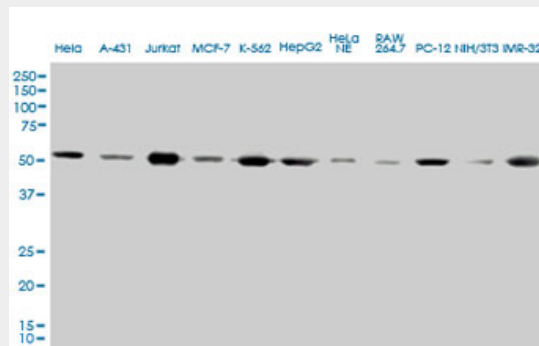
Cytoplasm, cytoskeleton.

TUBA4A / TUBA1 Antibody (clone 2E11) - Protocols

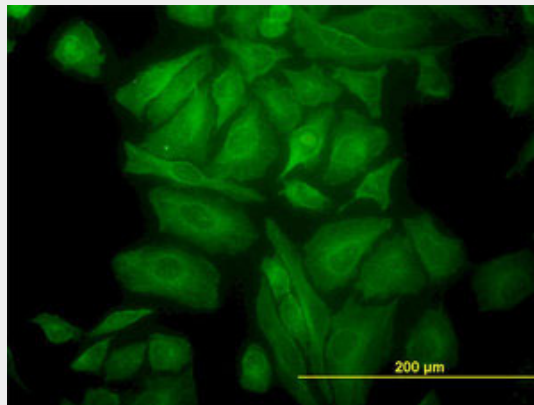
Provided below are standard protocols that you may find useful for product applications.

- [Western Blot](#)
- [Blocking Peptides](#)
- [Dot Blot](#)
- [Immunohistochemistry](#)
- [Immunofluorescence](#)
- [Immunoprecipitation](#)
- [Flow Cytometry](#)
- [Cell Culture](#)

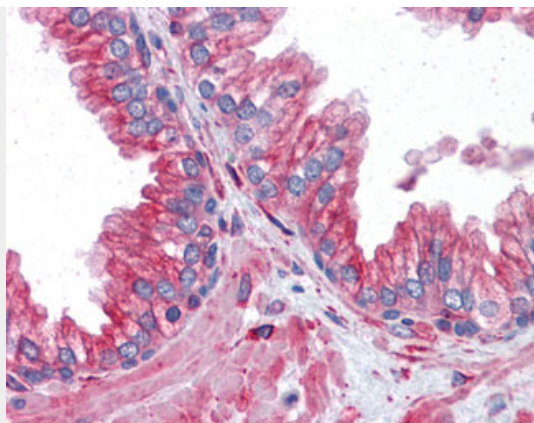
TUBA4A / TUBA1 Antibody (clone 2E11) - Images



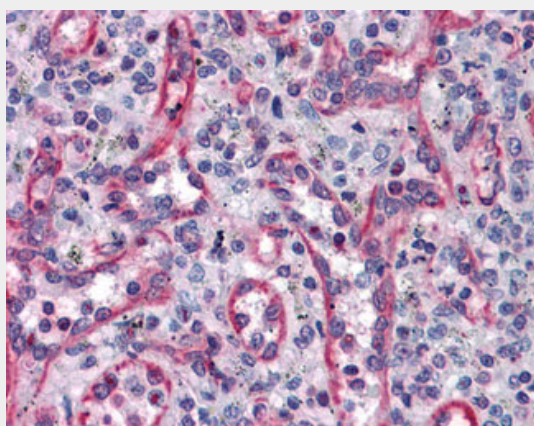
TUBA1 monoclonal antibody, clone 2E11.



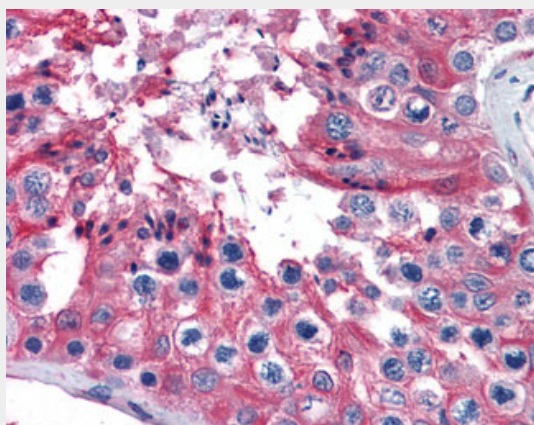
Immunofluorescence of monoclonal antibody to TUBA1 on HeLa cell (antibody concentration 10 ug/ml).



Anti-TUBA4A antibody IHC of human prostate.



Anti-TUBA4A antibody IHC of human spleen.



Anti-TUBA4A antibody IHC of human testis.

TUBA4A / TUBA1 Antibody (clone 2E11) - Background

Tubulin is the major constituent of microtubules. It binds two moles of GTP, one at an exchangeable site on the beta chain and one at a non-exchangeable site on the alpha chain.

TUBA4A / TUBA1 Antibody (clone 2E11) - References

- Dobner P.R.,et al.Nucleic Acids Res. 15:199-218(1987).
- Kalnine N.,et al.Submitted (MAY-2003) to the EMBL/GenBank/DDBJ databases.
- Ota T.,et al.Nat. Genet. 36:40-45(2004).

Hillier L.W.,et al.Nature 434:724-731(2005).

Mural R.J.,et al.Submitted (JUL-2005) to the EMBL/GenBank/DDBJ databases.