

**CAPN6 / Calpain 6 Antibody (C-Terminus)**  
**Rabbit Polyclonal Antibody**  
**Catalog # ALS13521****Specification**

---

**CAPN6 / Calpain 6 Antibody (C-Terminus) - Product Information**

Application	IF, IHC
Primary Accession	<a href="#">O9Y6Q1</a>
Reactivity	Human, Mouse, Rat
Host	Rabbit
Clonality	Polyclonal
Calculated MW	75kDa KDa

**CAPN6 / Calpain 6 Antibody (C-Terminus) - Additional Information****Gene ID** 827**Other Names**

Calpain-6, Calpain-like protease X-linked, Calpamodulin, CalpM, CAPN6, CALPM, CANPX

**Reconstitution & Storage**

Short term 4°C, long term aliquot and store at -20°C, avoid freeze thaw cycles. Store undiluted.

**Precautions**

CAPN6 / Calpain 6 Antibody (C-Terminus) is for research use only and not for use in diagnostic or therapeutic procedures.

**CAPN6 / Calpain 6 Antibody (C-Terminus) - Protein Information****Name** CAPN6**Synonyms** CALPM, CANPX**Function**

Microtubule-stabilizing protein that may be involved in the regulation of microtubule dynamics and cytoskeletal organization. May act as a regulator of RAC1 activity through interaction with ARHGEF2 to control lamellipodial formation and cell mobility. Does not seem to have protease activity as it has lost the active site residues (By similarity).

**Cellular Location**

Cytoplasm, perinuclear region. Cytoplasm, cytoskeleton, spindle. Note=During mitose associated with the mitotic spindle. At telophase colocalized to the midbody spindle

**Tissue Location**

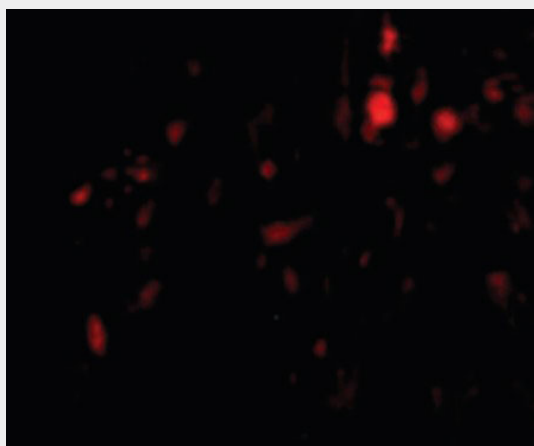
Expressed only in placenta.

## CAPN6 / Calpain 6 Antibody (C-Terminus) - Protocols

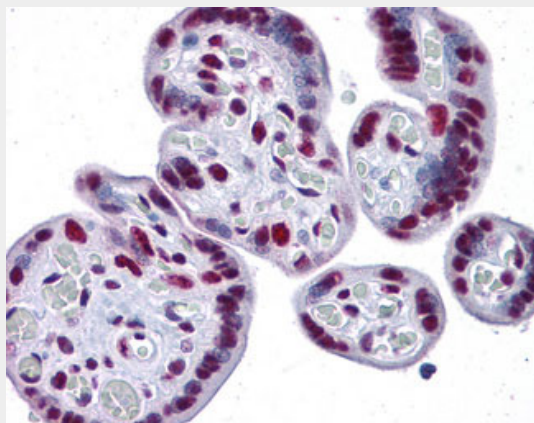
Provided below are standard protocols that you may find useful for product applications.

- [Western Blot](#)
- [Blocking Peptides](#)
- [Dot Blot](#)
- [Immunohistochemistry](#)
- [Immunofluorescence](#)
- [Immunoprecipitation](#)
- [Flow Cytometry](#)
- [Cell Culture](#)

## CAPN6 / Calpain 6 Antibody (C-Terminus) - Images



Immunofluorescence of CAPN6 in Human Lung cells with CAPN6 antibody at 20 ug/ml.



Anti-CAPN6 / Calpain 6 antibody IHC of human placenta.

## CAPN6 / Calpain 6 Antibody (C-Terminus) - Background

Microtubule-stabilizing protein that may be involved in the regulation of microtubule dynamics and cytoskeletal organization. May act as a regulator of RAC1 activity through interaction with ARHGEF2 to control lamellipodial formation and cell mobility. Does not seem to have protease activity as it has lost the active site residues (By similarity).

## CAPN6 / Calpain 6 Antibody (C-Terminus) - References

Dear T.N.,et al.Genomics 45:175-184(1997).

Crotty P.L.,et al.Submitted (OCT-1997) to the EMBL/GenBank/DDBJ databases.

Belsito A.,et al.Submitted (JUL-1997) to the EMBL/GenBank/DDBJ databases.

Ross M.T.,et al.Nature 434:325-337(2005).

Mural R.J.,et al.Submitted (SEP-2005) to the EMBL/GenBank/DDBJ databases.