

GOLM1 / GP73 / GOLPH2 Antibody (Internal)
Rabbit Polyclonal Antibody
Catalog # ALS13538**Specification**

GOLM1 / GP73 / GOLPH2 Antibody (Internal) - Product Information

Application	IF, WB, IHC
Primary Accession	Q8NBJ4
Reactivity	Human, Mouse, Rat
Host	Rabbit
Clonality	Polyclonal
Calculated MW	45kDa KDa

GOLM1 / GP73 / GOLPH2 Antibody (Internal) - Additional Information**Gene ID** 51280**Other Names**

Golgi membrane protein 1, Golgi membrane protein GP73, Golgi phosphoprotein 2, GOLM1, C9orf155, GOLPH2

Target/Specificity

Human GOLM1

Reconstitution & Storage

Short term 4°C, long term aliquot and store at -20°C, avoid freeze thaw cycles. Store undiluted.

Precautions

GOLM1 / GP73 / GOLPH2 Antibody (Internal) is for research use only and not for use in diagnostic or therapeutic procedures.

GOLM1 / GP73 / GOLPH2 Antibody (Internal) - Protein Information**Name** GOLM1**Synonyms** C9orf155, GOLPH2**Function**

Unknown. Cellular response protein to viral infection.

Cellular Location

Golgi apparatus, cis-Golgi network membrane; Single-pass type II membrane protein. Note=Early Golgi. Cycles via the cell surface and endosomes upon lumenal pH disruption

Tissue Location

Widely expressed. Highly expressed in colon, prostate, trachea and stomach. Expressed at lower level in testis, muscle, lymphoid tissues, white blood cells and spleen. Predominantly expressed by cells of the epithelial lineage. Expressed at low level in normal liver. Expression significantly

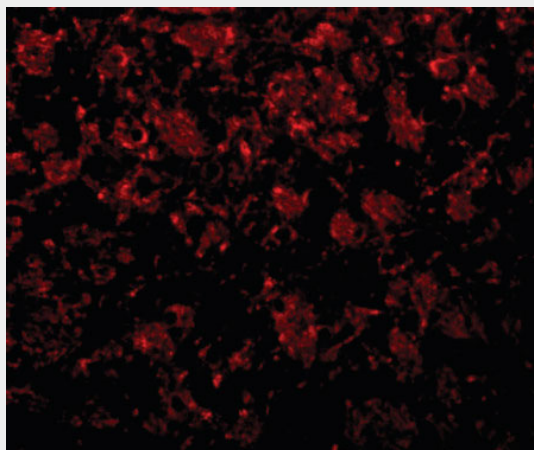
increases in virus (HBV, HCV) infected liver. Expression does not increase in liver disease due to non-viral causes (alcohol-induced liver disease, autoimmune hepatitis) Increased expression in hepatocytes appears to be a general feature of advanced liver disease. In liver tissue from patients with adult giant- cell hepatitis (GCH), it is strongly expressed in hepatocytes-derived syncytial giant cells. Constitutively expressed by biliary epithelial cells but not by hepatocytes.

GOLM1 / GP73 / GOLPH2 Antibody (Internal) - Protocols

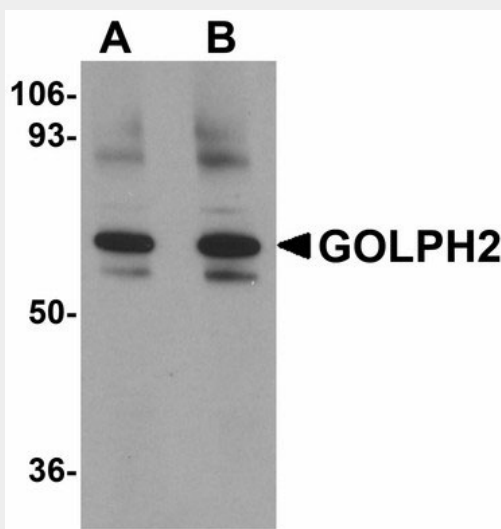
Provided below are standard protocols that you may find useful for product applications.

- [Western Blot](#)
- [Blocking Peptides](#)
- [Dot Blot](#)
- [Immunohistochemistry](#)
- [Immunofluorescence](#)
- [Immunoprecipitation](#)
- [Flow Cytometry](#)
- [Cell Culture](#)

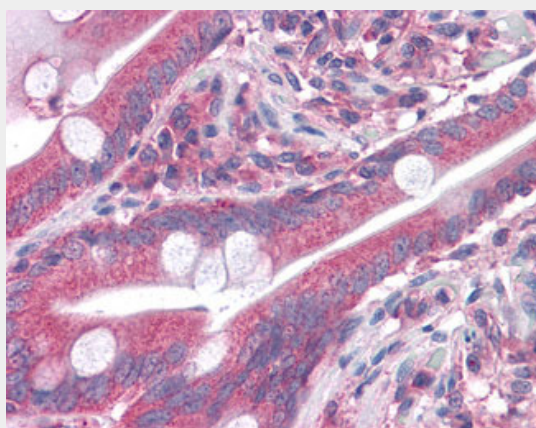
GOLM1 / GP73 / GOLPH2 Antibody (Internal) - Images



Immunofluorescence of GOLPH2 in rat brain tissue with GOLPH2 antibody at 20 ug/ml.



Western blot of GOLPH2 in rat brain tissue lysate with GOLPH2 antibody at (A) 0.25 and (B) 0.5...



Anti-GOLM1 / GOLPH2 antibody IHC of human small intestine.

GOLM1 / GP73 / GOLPH2 Antibody (Internal) - Background

Unknown. Cellular response protein to viral infection.

GOLM1 / GP73 / GOLPH2 Antibody (Internal) - References

- Kladney R.D.,et al.Gene 249:53-65(2000).
Clark H.F.,et al.Genome Res. 13:2265-2270(2003).
Ebert L.,et al.Submitted (JUN-2004) to the EMBL/GenBank/DDBJ databases.
Otsuki T.,et al.DNA Res. 12:117-126(2005).
Puri S.,et al.Traffic 3:641-653(2002).