

**BCAS1 / NABC1 Antibody (C-Terminus)**  
**Rabbit Polyclonal Antibody**  
**Catalog # ALS13553****Specification**

---

**BCAS1 / NABC1 Antibody (C-Terminus) - Product Information**

Application	WB, IHC-P, IF, E
Primary Accession	<a href="#">O75363</a>
Reactivity	Human
Host	Rabbit
Clonality	Polyclonal
Calculated MW	62kDa KDa
Dilution	WB~~1:1000 IHC-P~~N/A IF~~1:50~200 E~~N/A

**BCAS1 / NABC1 Antibody (C-Terminus) - Additional Information****Gene ID** 8537**Other Names**

Breast carcinoma-amplified sequence 1, Amplified and overexpressed in breast cancer, Novel amplified in breast cancer 1, BCAS1, AIBC1, NABC1

**Target/Specificity**

Human BCAS1

**Reconstitution & Storage**

Short term 4°C, long term aliquot and store at -20°C, avoid freeze thaw cycles. Store undiluted.

**Precautions**

BCAS1 / NABC1 Antibody (C-Terminus) is for research use only and not for use in diagnostic or therapeutic procedures.

**BCAS1 / NABC1 Antibody (C-Terminus) - Protein Information****Name** BCAS1**Synonyms** AIBC1, NABC1**Function**

Required for myelination.

**Cellular Location**

Cytoplasm.

**Tissue Location**

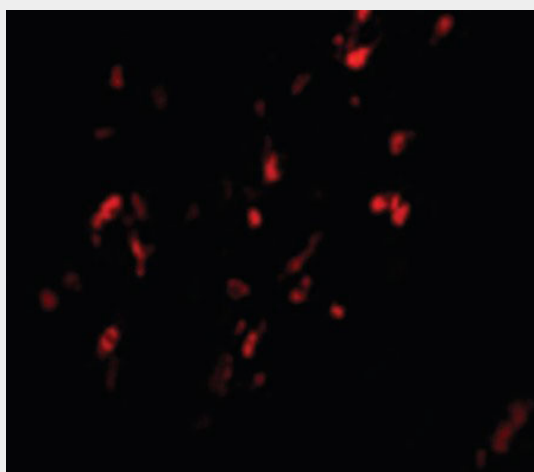
Highly expressed in the brain and, more specifically, in oligodendrocytes (at protein level).  
Expressed in the prostate, and at lower levels in testis, intestine and colon Overexpressed in most breast cancer cell lines and down-regulated in some colorectal tumors.

### **BCAS1 / NABC1 Antibody (C-Terminus) - Protocols**

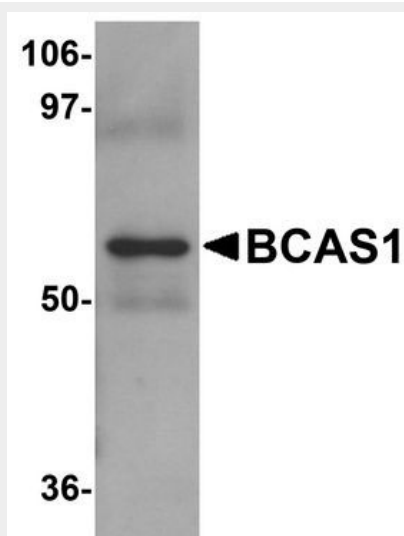
Provided below are standard protocols that you may find useful for product applications.

- [Western Blot](#)
- [Blocking Peptides](#)
- [Dot Blot](#)
- [Immunohistochemistry](#)
- [Immunofluorescence](#)
- [Immunoprecipitation](#)
- [Flow Cytometry](#)
- [Cell Culture](#)

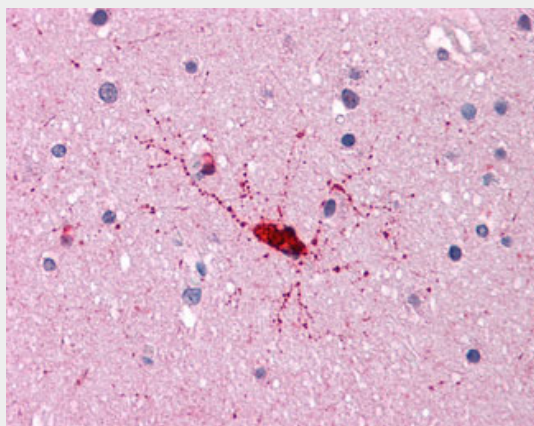
### **BCAS1 / NABC1 Antibody (C-Terminus) - Images**



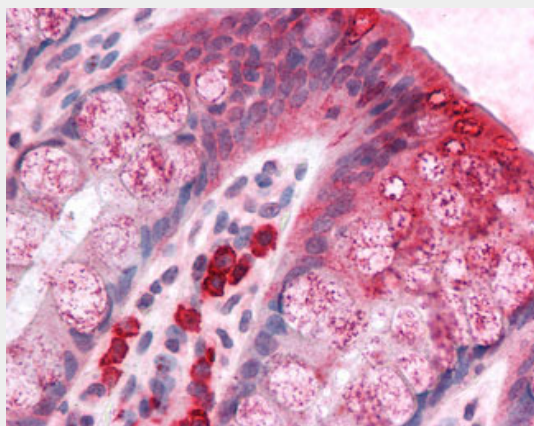
Immunofluorescence of BCAS1 in Human Breast Carcinoma cells with BCAS1 antibody at 20 ug/ml.



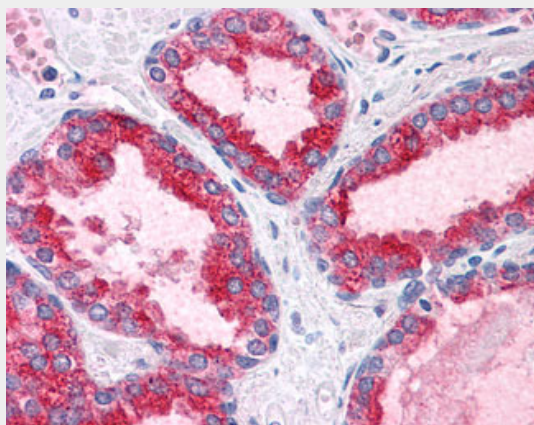
Western blot analysis of BCAS1 in human lung tissue lysate with BCAS1 antibody at 1 ug/ml.



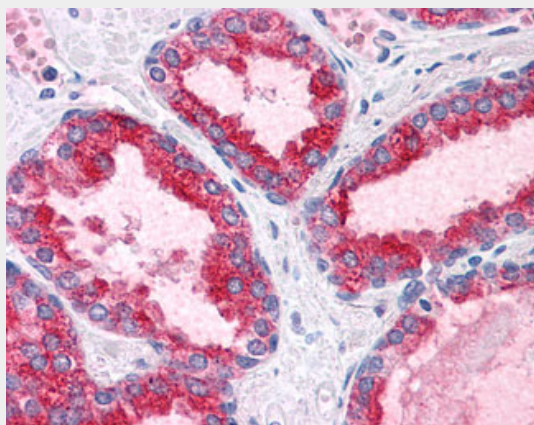
Anti-BCAS1 / NABC1 antibody IHC of human brain, cortex.



Anti-BCAS1 / NABC1 antibody IHC of human colon.



Anti-BCAS1 / NABC1 antibody IHC of human prostate.



#### **BCAS1 / NABC1 Antibody (C-Terminus) - References**

- Collins C., et al. Proc. Natl. Acad. Sci. U.S.A. 95:8703-8708(1998).  
Deloukas P., et al. Nature 414:865-871(2001).  
Correa R.G., et al. Genomics 65:299-302(2000).  
Bechtel S., et al. BMC Genomics 8:399-399(2007).  
Beardsley D.I., et al. Exp. Cell Res. 290:402-413(2003).