

TGF-Beta Antibody (clone TB21)
Mouse Monoclonal Antibody
Catalog # ALS13608**Specification**

TGF-Beta Antibody (clone TB21) - Product Information

Application	WB, IHC-P, E, IHC-F, Neut, FuncS
Primary Accession	P01137
Reactivity	Human
Host	Mouse
Clonality	Monoclonal
Dilution	WB~~1:1000 IHC-P~~N/A E~~N/A IHC-F~~N/A Neut~~N/A FuncS~~N/A

TGF-Beta Antibody (clone TB21) - Additional Information**Gene ID** 7040**Other Names**

Transforming growth factor beta-1, TGF-beta-1, Latency-associated peptide, LAP, TGFB1, TGFB

Target/Specificity

Recognizes both human platelet-derived and recombinant TGF-beta.

Reconstitution & Storage

Short term 4°C, long term aliquot and store at -20°C, avoid freeze thaw cycles.

Precautions

TGF-Beta Antibody (clone TB21) is for research use only and not for use in diagnostic or therapeutic procedures.

TGF-Beta Antibody (clone TB21) - Protein Information**Name** TGFB1 ([HGNC:11766](#))**Synonyms** TGFB**Function**

Transforming growth factor beta-1 proprotein: Precursor of the Latency-associated peptide (LAP) and Transforming growth factor beta-1 (TGF-beta-1) chains, which constitute the regulatory and active subunit of TGF-beta-1, respectively.

Cellular Location

[Latency-associated peptide]: Secreted, extracellular space, extracellular matrix

Tissue Location

Highly expressed in bone (PubMed:11746498, PubMed:17827158). Abundantly expressed in articular cartilage and chondrocytes and is increased in osteoarthritis (OA) (PubMed:11746498, PubMed:17827158). Colocalizes with ASPN in chondrocytes within OA lesions of articular cartilage (PubMed:17827158)

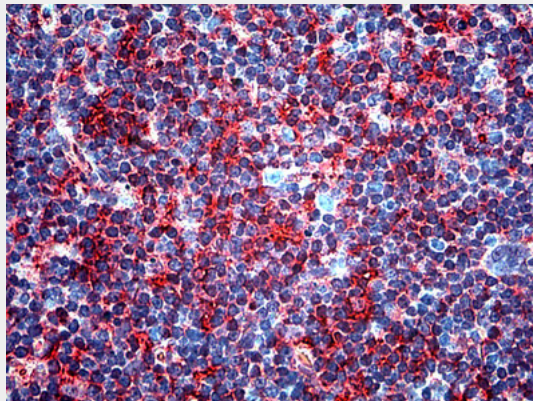
Volume

250 µl

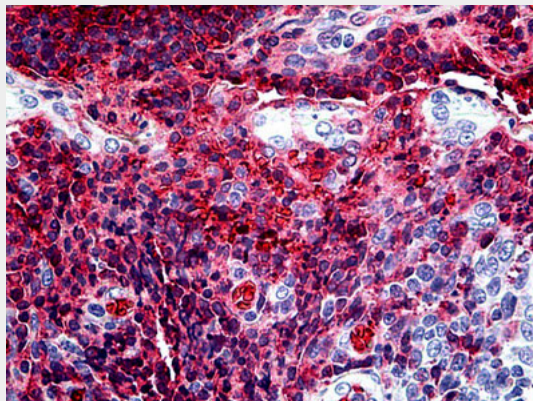
TGF-Beta Antibody (clone TB21) - Protocols

Provided below are standard protocols that you may find useful for product applications.

- [Western Blot](#)
- [Blocking Peptides](#)
- [Dot Blot](#)
- [Immunohistochemistry](#)
- [Immunofluorescence](#)
- [Immunoprecipitation](#)
- [Flow Cytometry](#)
- [Cell Culture](#)

TGF-Beta Antibody (clone TB21) - Images

Anti-TGF-Beta antibody IHC of human thymus.



Anti-TGF-Beta antibody IHC of human tonsil.