

TPM1 / Tropomyosin Antibody
Rabbit Polyclonal Antibody
Catalog # ALS13626**Specification**

TPM1 / Tropomyosin Antibody - Product Information

Application	WB, IHC-P
Primary Accession	P09493
Reactivity	Human, Mouse
Host	Rabbit
Clonality	Polyclonal
Calculated MW	33kDa KDa
Dilution	WB~~1:1000 IHC-P~~N/A

TPM1 / Tropomyosin Antibody - Additional Information**Gene ID** 7168**Other Names**

Tropomyosin alpha-1 chain, Alpha-tropomyosin, Tropomyosin-1, TPM1, C15orf13, TMSA

Target/Specificity

Human Tropomyosin 1. Predicted cross-reactivity based on amino acid sequence homology: mouse (99%), rat (88%), rabbit (88%), bovine (88%), pig (88%).

Reconstitution & Storage

Aliquot and store at -20°C. Minimize freezing and thawing.

Precautions

TPM1 / Tropomyosin Antibody is for research use only and not for use in diagnostic or therapeutic procedures.

TPM1 / Tropomyosin Antibody - Protein Information**Name** TPM1**Synonyms** C15orf13, TMSA**Function**

Binds to actin filaments in muscle and non-muscle cells (PubMed:[23170982](http://www.uniprot.org/citations/23170982)). Plays a central role, in association with the troponin complex, in the calcium dependent regulation of vertebrate striated muscle contraction (PubMed:[23170982](http://www.uniprot.org/citations/23170982)). Smooth muscle contraction is regulated by interaction with caldesmon. In non-muscle cells is implicated in stabilizing cytoskeleton actin filaments.

Cellular Location

Cytoplasm, cytoskeleton {ECO:0000250|UniProtKB:P04692}. Note=Associates with F-actin stress fibers. {ECO:0000250|UniProtKB:P04692}

Tissue Location

Detected in primary breast cancer tissues but undetectable in normal breast tissues in Sudanese patients. Isoform 1 is expressed in adult and fetal skeletal muscle and cardiac tissues, with higher expression levels in the cardiac tissues. Isoform 10 is expressed in adult and fetal cardiac tissues, but not in skeletal muscle. {ECO:0000269|PubMed:15249230, ECO:0000269|Ref.15}

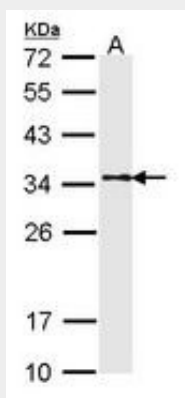
Volume

50 μ l

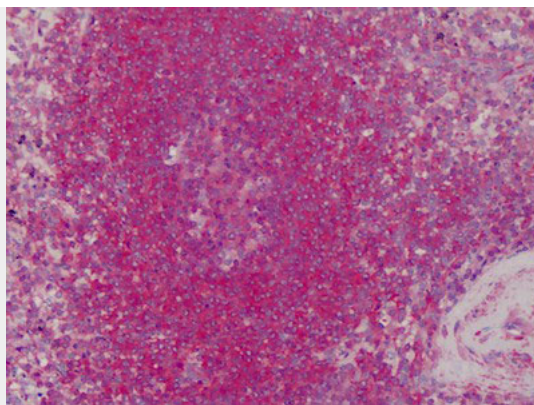
TPM1 / Tropomyosin Antibody - Protocols

Provided below are standard protocols that you may find useful for product applications.

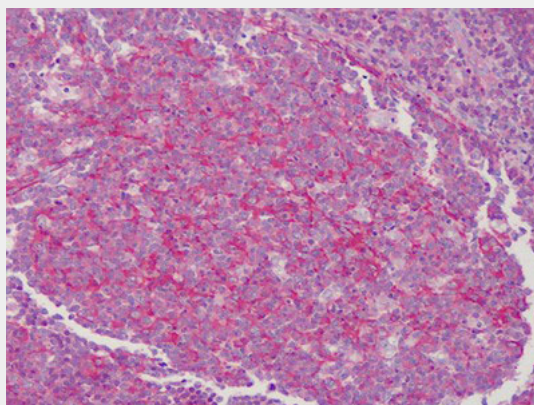
- [Western Blot](#)
- [Blocking Peptides](#)
- [Dot Blot](#)
- [Immunohistochemistry](#)
- [Immunofluorescence](#)
- [Immunoprecipitation](#)
- [Flow Cytometry](#)
- [Cell Culture](#)

TPM1 / Tropomyosin Antibody - Images

Sample (30 ug of whole cell lysate). A: A431. 12% SDS PAGE. TPM1 antibody diluted at 1:1000.



Anti-Tropomyosin 1 antibody IHC of human spleen.



Anti-Tropomyosin 1 antibody IHC of human tonsil.

TPM1 / Tropomyosin Antibody - Background

Binds to actin filaments in muscle and non-muscle cells. Plays a central role, in association with the troponin complex, in the calcium dependent regulation of vertebrate striated muscle contraction. Smooth muscle contraction is regulated by interaction with caldesmon. In non-muscle cells is implicated in stabilizing cytoskeleton actin filaments.

TPM1 / Tropomyosin Antibody - References

- Mische S.M.,et al.Biochem. Biophys. Res. Commun. 142:813-818(1987).
Lin C.-S.,et al.Mol. Cell. Biol. 8:160-168(1988).
McLeod A.R.,et al.Mol. Cell. Biol. 8:433-440(1988).
Denz C.R.,et al.Biochem. Biophys. Res. Commun. 320:1291-1297(2004).
Ota T.,et al.Nat. Genet. 36:40-45(2004).