

**MPP5 Antibody**  
**Rabbit Polyclonal Antibody**  
**Catalog # ALS13640****Specification**

---

**MPP5 Antibody - Product Information**

Application	WB, IHC
Primary Accession	<a href="#">Q8N3R9</a>
Reactivity	Human
Host	Rabbit
Clonality	Polyclonal
Calculated MW	77kDa KDa

**MPP5 Antibody - Additional Information****Gene ID** 64398**Other Names**

MAGUK p55 subfamily member 5, MPP5

**Target/Specificity**

Human MPP5.

**Reconstitution & Storage**

Aliquot and store at -20°C. Minimize freezing and thawing.

**Precautions**

MPP5 Antibody is for research use only and not for use in diagnostic or therapeutic procedures.

**MPP5 Antibody - Protein Information****Name** PALS1 {ECO:0000303|PubMed:21479189, ECO:0000312|HGNC:HGNC:18669}**Function**

Plays a role in tight junction biogenesis and in the establishment of cell polarity in epithelial cells (PubMed:<a href="http://www.uniprot.org/citations/16678097" target="\_blank">16678097</a>, PubMed:<a href="http://www.uniprot.org/citations/25385611" target="\_blank">25385611</a>). Also involved in adherens junction biogenesis by ensuring correct localization of the exocyst complex protein EXOC4/SEC8 which allows trafficking of adherens junction structural component CDH1 to the cell surface (By similarity). Plays a role through its interaction with CDH5 in vascular lumen formation and endothelial membrane polarity (PubMed:<a href="http://www.uniprot.org/citations/27466317" target="\_blank">27466317</a>). Required during embryonic and postnatal retinal development (By similarity). Required for the maintenance of cerebellar progenitor cells in an undifferentiated proliferative state, preventing premature differentiation, and is required for cerebellar histogenesis, fissure formation, cerebellar layer organization and cortical development (By similarity). Plays a role in neuronal progenitor cell survival, potentially via promotion of mTOR signaling (By similarity). Plays a role in the radial and longitudinal extension of the myelin sheath in Schwann cells (By similarity). May modulate

SC6A1/GAT1-mediated GABA uptake by stabilizing the transporter (By similarity). Plays a role in the T-cell receptor-mediated activation of NF-kappa-B (PubMed:<a href="http://www.uniprot.org/citations/21479189" target="\_blank">21479189</a>). Required for localization of EZR to the apical membrane of parietal cells and may play a role in the dynamic remodeling of the apical cytoskeleton (By similarity). Required for the normal polarized localization of the vesicular marker STX4 (By similarity). Required for the correct trafficking of the myelin proteins PMP22 and MAG (By similarity). Involved in promoting phosphorylation and cytoplasmic retention of transcriptional coactivators YAP1 and WWTR1/TAZ which leads to suppression of TGFBI-dependent transcription of target genes such as CCN2/CTGF, SERPINE1/PAI1, SNAI1/SNAI1 and SMAD7 (By similarity).

#### Cellular Location

Golgi apparatus. Cell membrane; Peripheral membrane protein. Endomembrane system; Peripheral membrane protein. Cell junction, tight junction. Cell junction, adherens junction. Cell projection, axon {ECO:0000250|UniProtKB:Q9JLB2}. Perikaryon {ECO:0000250|UniProtKB:Q9JLB2}. Apical cell membrane. Note=Localized to the tight junctions of epithelial cells (By similarity). Localized to the Golgi apparatus in T lymphocytes (PubMed:21479189). Localized to a subset of intracellular vesicles (By similarity). Localized to the Purkinje cell body and axon (By similarity). Localized to intercellular junctions in vascular endothelial cells (PubMed:27466317). Localized to Schmidt-Lanterman incisures, the adaxonal domain, and the inner part of paranodal loops in myelinating Schwann cells of the sciatic nerve (By similarity) Localized to apical membrane domains of the outer limiting membrane (OLM) junctions in the retina (By similarity). Colocalizes with CRB1 at the OLM, apical to the adherens junction (PubMed:15914641). Colocalizes with MPP1 in the retina at the OLM (PubMed:17584769). Colocalizes with MPP3 to the subapical region of adherens junctions in the retina OLM (PubMed:16519681). {ECO:0000250|UniProtKB:Q9JLB2, ECO:0000269|PubMed:15914641, ECO:0000269|PubMed:16519681, ECO:0000269|PubMed:17584769, ECO:0000269|PubMed:21479189, ECO:0000269|PubMed:27466317}

#### Tissue Location

Expressed at the outer limiting membrane in the retina (at protein level) (PubMed:15914641, PubMed:15558731, PubMed:16519681, PubMed:17584769). Expressed in T lymphocytes (at protein level) (PubMed:21479189). Expressed in the kidney (at protein level) (PubMed:17584769).

#### Volume

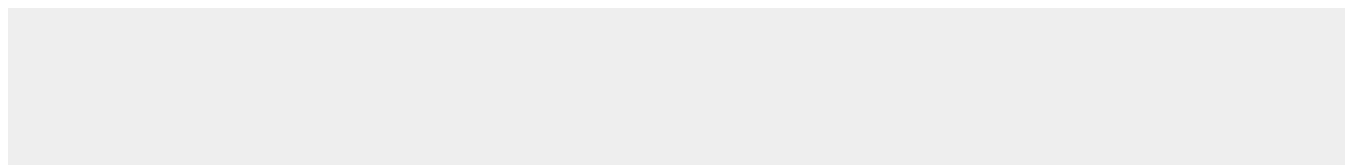
50 µl

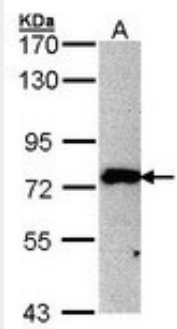
#### MPP5 Antibody - Protocols

Provided below are standard protocols that you may find useful for product applications.

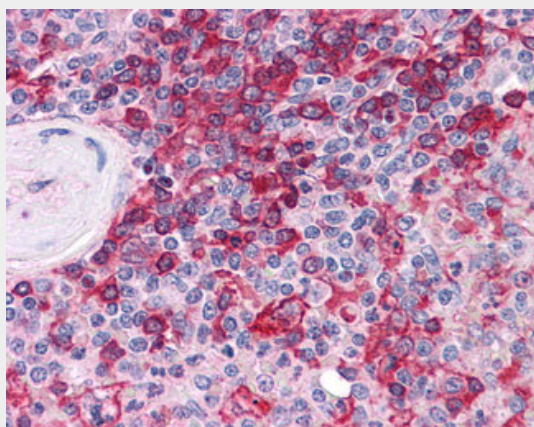
- [Western Blot](#)
- [Blocking Peptides](#)
- [Dot Blot](#)
- [Immunohistochemistry](#)
- [Immunofluorescence](#)
- [Immunoprecipitation](#)
- [Flow Cytometry](#)
- [Cell Culture](#)

#### MPP5 Antibody - Images





Sample (30 ug of whole cell lysate). A: 293T. 7.5% SDS PAGE. MPP5 antibody diluted at 1:500.



Anti-MPP5 antibody IHC of human spleen.

### **MPP5 Antibody - Background**

May play a role in tight junction biogenesis and in the establishment of cell polarity in epithelial cells. May modulate SC6A1/GAT1-mediated GABA uptake by stabilizing the transporter. Required for localization of EZR to the apical membrane of parietal cells and may play a role in the dynamic remodeling of the apical cytoskeleton (By similarity).

### **MPP5 Antibody - References**

- Bechtel S.,et al.BMC Genomics 8:399-399(2007).
- Mural R.J.,et al.Submitted (JUL-2005) to the EMBL/GenBank/DDBJ databases.
- Ota T.,et al.Nat. Genet. 36:40-45(2004).
- Kantardzhieva A.,et al.Invest. Ophthalmol. Vis. Sci. 46:2192-2201(2005).
- Stoehr H.,et al.J. Comp. Neurol. 481:31-41(2005).