

ELP3 Antibody
Rabbit Polyclonal Antibody
Catalog # ALS13660**Specification**

ELP3 Antibody - Product Information

Application	WB, IHC-P, IF, ICC
Primary Accession	O9H9T3
Reactivity	Human
Host	Rabbit
Clonality	Polyclonal
Calculated MW	62kDa KDa
Dilution	WB~~1:1000 IHC-P~~N/A IF~~1:50~200 ICC~~N/A

ELP3 Antibody - Additional Information**Gene ID** 55140**Other Names**

Elongator complex protein 3, hELP3, 2.3.1.48, ELP3

Target/Specificity

Human ELP3. Predicted cross-reactivity based on amino acid sequence homology: mouse (96%), bovine (98%), zebrafish (92%).

Reconstitution & Storage

Aliquot and store at -20°C. Minimize freezing and thawing.

Precautions

ELP3 Antibody is for research use only and not for use in diagnostic or therapeutic procedures.

ELP3 Antibody - Protein Information**Name** ELP3 {ECO:0000303|PubMed:15902492, ECO:0000312|HGNC:HGNC:20696}**Function**

Catalytic tRNA acetyltransferase subunit of the elongator complex which is required for multiple tRNA modifications, including mcm5U (5-methoxycarbonylmethyl uridine), mcm5s2U (5-methoxycarbonylmethyl-2-thiouridine), and ncm5U (5-carbamoylmethyl uridine) (PubMed:29415125). In the elongator complex, acts as a tRNA uridine(34) acetyltransferase by mediating formation of carboxymethyluridine in the wobble base at position 34 in tRNAs (By similarity). May also act as a protein lysine acetyltransferase by mediating acetylation of target proteins; such activity is however unclear in vivo and recent evidences suggest that ELP3 primarily acts as a tRNA acetyltransferase (PubMed:29415125).

target="_blank">29415125). Involved in neurogenesis: regulates the migration and branching of projection neurons in the developing cerebral cortex, through a process depending on alpha-tubulin acetylation (PubMed:19185337). Required for acetylation of GJA1 in the developing cerebral cortex (By similarity).

Cellular Location

Cytoplasm. Nucleus [Isoform 2]: Cytoplasm. Nucleus

Tissue Location

Expressed in the cerebellum and spinal motor neurons.

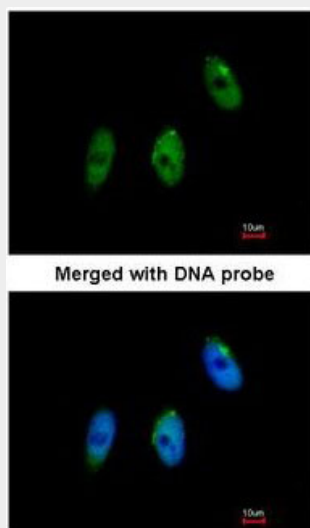
Volume

50 μ l

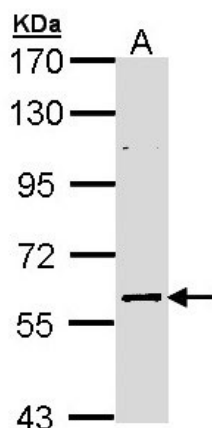
ELP3 Antibody - Protocols

Provided below are standard protocols that you may find useful for product applications.

- [Western Blot](#)
- [Blocking Peptides](#)
- [Dot Blot](#)
- [Immunohistochemistry](#)
- [Immunofluorescence](#)
- [Immunoprecipitation](#)
- [Flow Cytometry](#)
- [Cell Culture](#)

ELP3 Antibody - Images

Immunofluorescence of paraformaldehyde-fixed HeLa, using ELP3 antibody at 1:100 dilution.



Sample (30 ug of whole cell lysate).

ELP3 Antibody - Background

Catalytic histone acetyltransferase subunit of the RNA polymerase II elongator complex, which is a component of the RNA polymerase II (Pol II) holoenzyme and is involved in transcriptional elongation. Elongator may play a role in chromatin remodeling and is involved in acetylation of histones H3 and probably H4. Involved in acetylation of alpha-tubulin (PubMed:19185337). May also have a methyltransferase activity. Involved in cell migration. Involved in neurogenesis. Regulates the migration and branching of projection neurons in the developing cerebral cortex, through a process depending on alpha- tubulin acetylation (By similarity).

ELP3 Antibody - References

Ota T.,et al.Nat. Genet. 36:40-45(2004).
Bechtel S.,et al.BMC Genomics 8:399-399(2007).
Nusbaum C.,et al.Nature 439:331-335(2006).
Suzuki Y.,et al.Submitted (APR-2005) to the EMBL/GenBank/DDBJ databases.
Hawkes N.A.,et al.J. Biol. Chem. 277:3047-3052(2002).