

**TLR3 Antibody**  
**Rabbit Polyclonal Antibody**  
**Catalog # ALS13663****Specification**

---

**TLR3 Antibody - Product Information**

Application	WB, IHC-P, IF, ICC
Primary Accession	<a href="#">O15455</a>
Reactivity	Human
Host	Rabbit
Clonality	Polyclonal
Calculated MW	104kDa KDa
Dilution	WB~~1:1000 IHC-P~~N/A IF~~1:50~200 ICC~~N/A

**TLR3 Antibody - Additional Information****Gene ID** 7098**Other Names**

Toll-like receptor 3, CD283, TLR3

**Target/Specificity**

Human TLR3. Predicted cross-reactivity based on amino acid sequence homology: mouse (81%), guinea pig (84%), rat (83%), rabbit (82%), bovine (86%), cat (86%), pig (84%), monkey (96%).

**Reconstitution & Storage**

Aliquot and store at -20°C. Minimize freezing and thawing.

**Precautions**

TLR3 Antibody is for research use only and not for use in diagnostic or therapeutic procedures.

**TLR3 Antibody - Protein Information****Name** TLR3 ([HGNC:11849](#))**Function**

Key component of innate and adaptive immunity. TLRs (Toll-like receptors) control host immune response against pathogens through recognition of molecular patterns specific to microorganisms. TLR3 is a nucleotide-sensing TLR which is activated by double-stranded RNA, a sign of viral infection. Acts via the adapter TRIF/TICAM1, leading to NF-kappa-B activation, IRF3 nuclear translocation, cytokine secretion and the inflammatory response.

**Cellular Location**

Endoplasmic reticulum membrane; Single-pass type I membrane protein. Endosome membrane. Early endosome

**Tissue Location**

Expressed at high level in placenta and pancreas. Also detected in CD11c+ immature dendritic cells. Only expressed in dendritic cells and not in other leukocytes, including monocyte precursors. TLR3 is the TLR that is expressed most strongly in the brain, especially in astrocytes, glia, and neurons

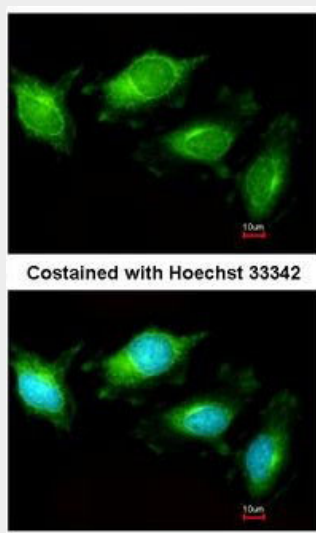
**Volume**

100 µl

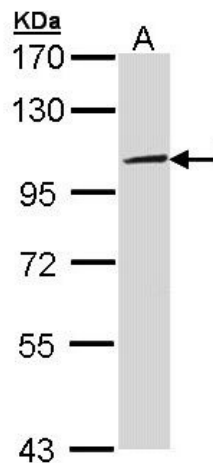
**TLR3 Antibody - Protocols**

Provided below are standard protocols that you may find useful for product applications.

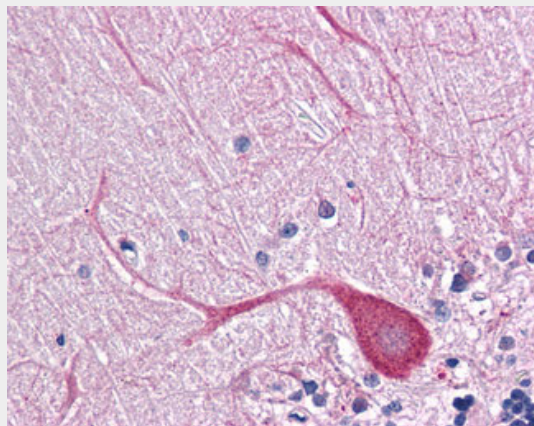
- [Western Blot](#)
- [Blocking Peptides](#)
- [Dot Blot](#)
- [Immunohistochemistry](#)
- [Immunofluorescence](#)
- [Immunoprecipitation](#)
- [Flow Cytometry](#)
- [Cell Culture](#)

**TLR3 Antibody - Images**

Immunofluorescence of methanol-fixed HeLa, using TLR3 antibody at 1:200 dilution.



Sample (30 ug of whole cell lysate). A: Molt-4. 7.5% SDS PAGE. TLR3 antibody diluted at 1:5000.



Anti-TLR3 antibody IHC of human brain, cerebellum.

### TLR3 Antibody - Background

Key component of innate and adaptive immunity. TLRs (Toll-like receptors) control host immune response against pathogens through recognition of molecular patterns specific to microorganisms. TLR3 is a nucleotide-sensing TLR which is activated by double-stranded RNA, a sign of viral infection. Acts via the adapter TRIF/TICAM1, leading to NF-kappa-B activation, IRF3 nuclear translocation, cytokine secretion and the inflammatory response.

### TLR3 Antibody - References

- Rock F.L.,et al.Proc. Natl. Acad. Sci. U.S.A. 95:588-593(1998).
- Lafon M.,et al.J. Mol. Neurosci. 29:185-194(2006).
- Nakajima T.,et al.Immunogenetics 60:727-735(2008).
- Macquin C.,et al.Submitted (JAN-2006) to the EMBL/GenBank/DDBJ databases.
- Ota T.,et al.Nat. Genet. 36:40-45(2004).