

EPHA6 / EPH Receptor A6 Antibody (aa891-940)
Rabbit Polyclonal Antibody
Catalog # ALS13680**Specification**

EPHA6 / EPH Receptor A6 Antibody (aa891-940) - Product Information

Application	IHC-P, IF, E
Primary Accession	Q9UF33
Reactivity	Human, Mouse, Rat
Host	Rabbit
Clonality	Polyclonal
Calculated MW	116kDa KDa
Dilution	IHC-P~~N/A IF~~1:50~200 E~~N/A

EPHA6 / EPH Receptor A6 Antibody (aa891-940) - Additional Information**Gene ID** 285220**Other Names**

Ephrin type-A receptor 6, 2.7.10.1, EPH homology kinase 2, EHK-2, EPH-like kinase 12, EK12, EPHA6, EHK2, HEK12

Target/Specificity

EPHA6 Antibody detects endogenous levels of total EPHA6 protein.

Reconstitution & Storage

Store at -20°C for up to one year.

Precautions

EPHA6 / EPH Receptor A6 Antibody (aa891-940) is for research use only and not for use in diagnostic or therapeutic procedures.

EPHA6 / EPH Receptor A6 Antibody (aa891-940) - Protein Information**Name** EPHA6**Synonyms** EHK2, HEK12**Function**

Receptor tyrosine kinase which binds promiscuously GPI- anchored ephrin-A family ligands residing on adjacent cells, leading to contact-dependent bidirectional signaling into neighboring cells. The signaling pathway downstream of the receptor is referred to as forward signaling while the signaling pathway downstream of the ephrin ligand is referred to as reverse signaling (By similarity).

Cellular Location

Membrane; Single-pass type I membrane protein

Tissue Location

Expressed in brain and testis.

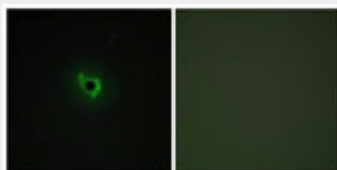
Volume

50 µl

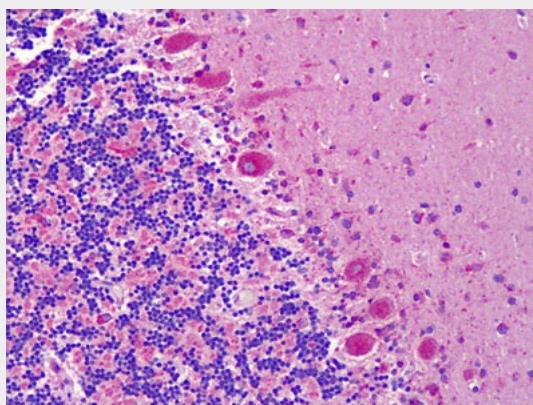
EPHA6 / EPH Receptor A6 Antibody (aa891-940) - Protocols

Provided below are standard protocols that you may find useful for product applications.

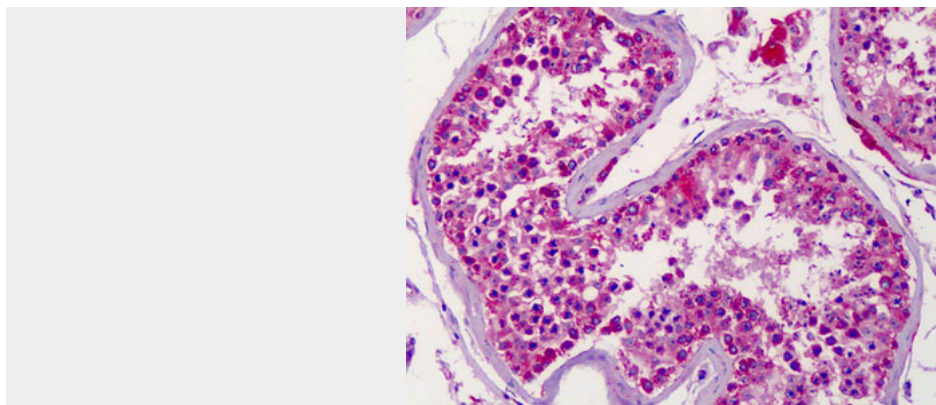
- [Western Blot](#)
- [Blocking Peptides](#)
- [Dot Blot](#)
- [Immunohistochemistry](#)
- [Immunofluorescence](#)
- [Immunoprecipitation](#)
- [Flow Cytometry](#)
- [Cell Culture](#)

EPHA6 / EPH Receptor A6 Antibody (aa891-940) - Images

Immunofluorescence of COS7 cells, using EPHA6 Antibody.



Anti-EPHA6 antibody IHC of human brain, cerebellum.



Anti-EPHA6 antibody IHC of human testis.

EPHA6 / EPH Receptor A6 Antibody (aa891-940) - Background

Receptor tyrosine kinase which binds promiscuously GPI- anchored ephrin-A family ligands residing on adjacent cells, leading to contact-dependent bidirectional signaling into neighboring cells. The signaling pathway downstream of the receptor is referred to as forward signaling while the signaling pathway downstream of the ephrin ligand is referred to as reverse signaling (By similarity).

EPHA6 / EPH Receptor A6 Antibody (aa891-940) - References

- Bechtel S.,et al.BMC Genomics 8:399-399(2007).
- Muzny D.M.,et al.Nature 440:1194-1198(2006).
- Hafner C.,et al.Clin. Chem. 50:490-499(2004).
- Greenman C.,et al.Nature 446:153-158(2007).