

**FNBP1 / FBP17 Antibody (Internal)**  
**Goat Polyclonal Antibody**  
**Catalog # ALS13695****Specification**

---

**FNBP1 / FBP17 Antibody (Internal) - Product Information**

Application	WB, IHC-P, E
Primary Accession	<a href="#">Q96RU3</a>
Reactivity	Human, Mouse, Rat, Zebrafish, Hamster, Monkey, Pig, Horse, Bovine, Dog
Host	Goat
Clonality	Polyclonal
Calculated MW	71kDa KDa
Dilution	WB~~1:1000 IHC-P~~N/A E~~N/A

**FNBP1 / FBP17 Antibody (Internal) - Additional Information****Gene ID** 23048**Other Names**

Formin-binding protein 1, Formin-binding protein 17, hFBP17, FNBP1, FBP17, KIAA0554

**Target/Specificity**

Human FNBP1.

**Reconstitution & Storage**

Store at -20°C. Minimize freezing and thawing.

**Precautions**

FNBP1 / FBP17 Antibody (Internal) is for research use only and not for use in diagnostic or therapeutic procedures.

**FNBP1 / FBP17 Antibody (Internal) - Protein Information****Name** FNBP1**Synonyms** FBP17, KIAA0554**Function**

May act as a link between RND2 signaling and regulation of the actin cytoskeleton (By similarity). Required to coordinate membrane tubulation with reorganization of the actin cytoskeleton during the late stage of clathrin-mediated endocytosis. Binds to lipids such as phosphatidylinositol 4,5-bisphosphate and phosphatidylserine and promotes membrane invagination and the formation of tubules. Also enhances actin polymerization via the recruitment of WASL/N-WASP, which in turn activates the Arp2/3 complex. Actin polymerization may promote the fission of membrane tubules to form endocytic vesicles. May be required for the lysosomal retention of FASLG/FASL.

**Cellular Location**

Cytoplasm. Cytoplasm, cytoskeleton. Cytoplasm, cell cortex. Lysosome. Cytoplasmic vesicle. Cell membrane; Peripheral membrane protein; Cytoplasmic side. Membrane, clathrin-coated pit  
Note=Enriched in cortical regions coincident with F-actin. Also localizes to endocytic vesicles and lysosomes

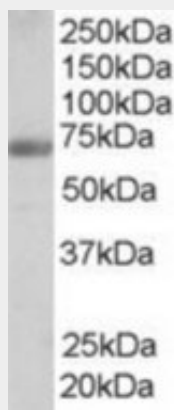
**Tissue Location**

Very highly expressed in the epithelial cells of the gastrointestinal tract, respiratory, reproductive and urinary systems. Also highly expressed in brown adipose tissue, cardiomyocytes, enteric ganglia and glucagon producing cells of the pancreas. Expressed in germ cells of the testis and all regions of the brain

**FBNP1 / FBP17 Antibody (Internal) - Protocols**

Provided below are standard protocols that you may find useful for product applications.

- [Western Blot](#)
- [Blocking Peptides](#)
- [Dot Blot](#)
- [Immunohistochemistry](#)
- [Immunofluorescence](#)
- [Immunoprecipitation](#)
- [Flow Cytometry](#)
- [Cell Culture](#)

**FBNP1 / FBP17 Antibody (Internal) - Images**

Antibody staining (0.25 ug/ml) of human testis lysate (RIPA buffer, 35 ug total protein per lane).

**FBNP1 / FBP17 Antibody (Internal) - Background**

May act as a link between RND2 signaling and regulation of the actin cytoskeleton (By similarity). Required to coordinate membrane tubulation with reorganization of the actin cytoskeleton during the late stage of clathrin-mediated endocytosis. Binds to lipids such as phosphatidylinositol 4,5-bisphosphate and phosphatidylserine and promotes membrane invagination and the formation of tubules. Also enhances actin polymerization via the recruitment of WASL/N-WASP, which in turn activates the Arp2/3 complex. Actin polymerization may promote the fission of membrane tubules to form endocytic vesicles. May be required for the lysosomal retention of FASLG/FASL.

**FBNP1 / FBP17 Antibody (Internal) - References**

Fuchs U.,et al.Proc. Natl. Acad. Sci. U.S.A. 98:8756-8761(2001).  
Nagase T.,et al.DNA Res. 5:31-39(1998).  
Ota T.,et al.Nat. Genet. 36:40-45(2004).  
Humphray S.J.,et al.Nature 429:369-374(2004).  
Richnau N.,et al.J. Biol. Chem. 276:35060-35070(2001).