

TPD52L2 / HD54 Antibody (C-Terminus)
Goat Polyclonal Antibody
Catalog # ALS13703**Specification**

TPD52L2 / HD54 Antibody (C-Terminus) - Product Information

Application	WB, IHC-P, E
Primary Accession	O43399
Reactivity	Human
Host	Goat
Clonality	Polyclonal
Calculated MW	22kDa KDa
Dilution	WB~~1:1000 IHC-P~~N/A E~~N/A

TPD52L2 / HD54 Antibody (C-Terminus) - Additional Information**Gene ID** 7165**Other Names**

Tumor protein D54, hD54, Tumor protein D52-like 2, TPD52L2

Target/Specificity

Human TPD52L2. This antibody is expected to recognise all reported isoforms (NP_955392.1; NP_955393.1; NP_955394.1; NP_955395.1; NP_003279.2; NP_955391.1).

Reconstitution & Storage

Store at -20°C. Minimize freezing and thawing.

Precautions

TPD52L2 / HD54 Antibody (C-Terminus) is for research use only and not for use in diagnostic or therapeutic procedures.

TPD52L2 / HD54 Antibody (C-Terminus) - Protein Information**Name** TPD52L2**TPD52L2 / HD54 Antibody (C-Terminus) - Protocols**

Provided below are standard protocols that you may find useful for product applications.

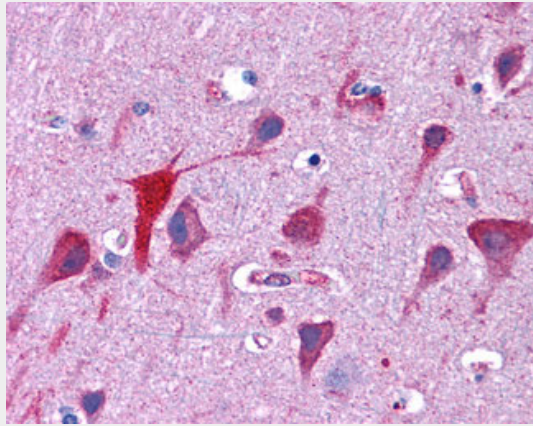
- [Western Blot](#)
- [Blocking Peptides](#)
- [Dot Blot](#)
- [Immunohistochemistry](#)

- [Immunofluorescence](#)
- [Immunoprecipitation](#)
- [Flow Cytometry](#)
- [Cell Culture](#)

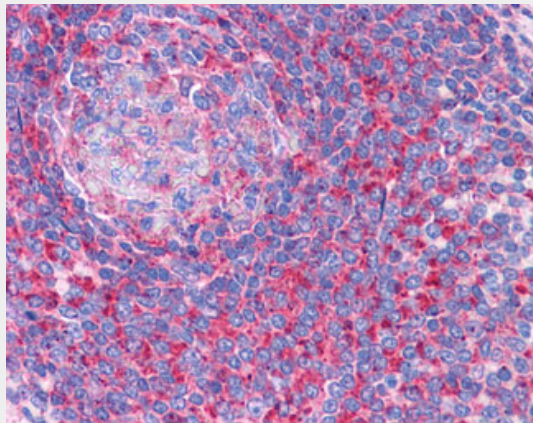
TPD52L2 / HD54 Antibody (C-Terminus) - Images



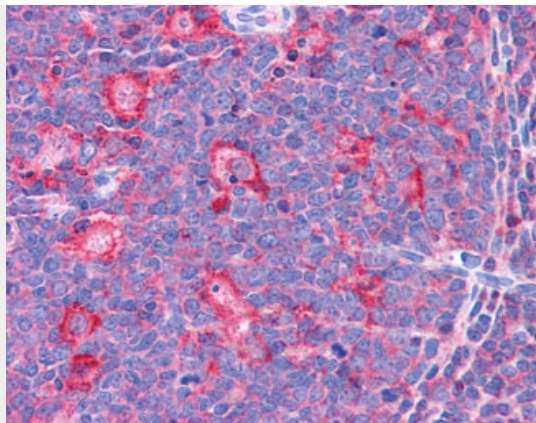
Antibody (0.1 ug/ml) staining of Human Breast Cancer lysate (35 ug protein in RIPA buffer).



Anti-TPD52L2 antibody IHC of human brain, cortex.



Anti-TPD52L2 antibody IHC of human spleen.



Anti-TPD52L2 antibody IHC of human tonsil.

TPD52L2 / HD54 Antibody (C-Terminus) - References

- Nourse C.R.,et al.Biochim. Biophys. Acta 1443:155-168(1998).
Ota T.,et al.Nat. Genet. 36:40-45(2004).
Kalnina N.,et al.Submitted (OCT-2004) to the EMBL/GenBank/DDBJ databases.
Deloukas P.,et al.Nature 414:865-871(2001).
Mural R.J.,et al.Submitted (SEP-2005) to the EMBL/GenBank/DDBJ databases.