

SNX16 Antibody (N-Terminus)
Goat Polyclonal Antibody
Catalog # ALS13714**Specification**

SNX16 Antibody (N-Terminus) - Product Information

Application	WB
Primary Accession	P57768
Reactivity	Human, Mouse, Rat, Rabbit, Hamster, Monkey, Horse, Dog
Host	Goat
Clonality	Polyclonal
Calculated MW	39kDa KDa

SNX16 Antibody (N-Terminus) - Additional Information**Gene ID** 64089**Other Names**

Sorting nexin-16, SNX16

Target/Specificity

Human SNX16. This antibody is expected to recognise both isoform a (NP_071416.2; NP_690049.1) and isoform b (NP_690050.1).

Reconstitution & Storage

Store at -20°C. Minimize freezing and thawing.

Precautions

SNX16 Antibody (N-Terminus) is for research use only and not for use in diagnostic or therapeutic procedures.

SNX16 Antibody (N-Terminus) - Protein Information**Name** SNX16**Function**

May be involved in several stages of intracellular trafficking. Plays a role in protein transport from early to late endosomes. Plays a role in protein transport to the lysosome. Promotes degradation of EGFR after EGF signaling. Plays a role in intracellular transport of vesicular stomatitis virus nucleocapsids from the endosome to the cytoplasm.

Cellular Location

Early endosome membrane; Peripheral membrane protein; Cytoplasmic side. Late endosome membrane; Peripheral membrane protein; Cytoplasmic side. Cytoplasm. Lysosome

Tissue Location

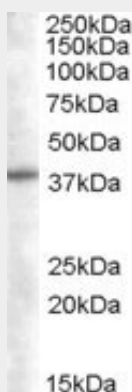
Detected in placenta, lung, liver, heart and pancreas.

SNX16 Antibody (N-Terminus) - Protocols

Provided below are standard protocols that you may find useful for product applications.

- [Western Blot](#)
- [Blocking Peptides](#)
- [Dot Blot](#)
- [Immunohistochemistry](#)
- [Immunofluorescence](#)
- [Immunoprecipitation](#)
- [Flow Cytometry](#)
- [Cell Culture](#)

SNX16 Antibody (N-Terminus) - Images



Antibody (0.05 ug/ml) staining of Daudi lysate (35 ug protein in RIPA buffer).

SNX16 Antibody (N-Terminus) - Background

May be involved in several stages of intracellular trafficking. Plays a role in protein transport from early to late endosomes. Plays a role in protein transport to the lysosome. Promotes degradation of EGFR after EGF signaling. Plays a role in intracellular transport of vesicular stomatitis virus nucleocapsids from the endosome to the cytoplasm.

SNX16 Antibody (N-Terminus) - References

Hanson B.J., et al. Submitted (SEP-2000) to the EMBL/GenBank/DDBJ databases.
Ota T., et al. Nat. Genet. 36:40-45(2004).
Bechtel S., et al. BMC Genomics 8:399-399(2007).
Nusbaum C., et al. Nature 439:331-335(2006).
Mural R.J., et al. Submitted (JUL-2005) to the EMBL/GenBank/DDBJ databases.