

**NENF / Neudesin Antibody (C-Terminus)**  
**Rabbit Polyclonal Antibody**  
**Catalog # ALS13732****Specification**

---

**NENF / Neudesin Antibody (C-Terminus) - Product Information**

Application	IF, IHC
Primary Accession	<a href="#">O9UMX5</a>
Reactivity	Human, Mouse, Rat
Host	Rabbit
Clonality	Polyclonal
Calculated MW	19kDa KDa

**NENF / Neudesin Antibody (C-Terminus) - Additional Information****Gene ID** 29937**Other Names**

Neudesin, Cell immortalization-related protein 2, Neuron-derived neurotrophic factor, Secreted protein of unknown function, SPUF protein, NENF, CIR2, SPUF

**Reconstitution & Storage**

Short term 4°C, long term aliquot and store at -20°C, avoid freeze thaw cycles. Store undiluted.

**Precautions**

NENF / Neudesin Antibody (C-Terminus) is for research use only and not for use in diagnostic or therapeutic procedures.

**NENF / Neudesin Antibody (C-Terminus) - Protein Information****Name** NENF ([HGNC:30384](#))**Synonyms** CIR2, SPUF**Function**

Acts as a neurotrophic factor in postnatal mature neurons enhancing neuronal survival (PubMed:<a href="http://www.uniprot.org/citations/31536960" target="\_blank">31536960</a>). Promotes cell proliferation and neurogenesis in undifferentiated neural progenitor cells at the embryonic stage and inhibits differentiation of astrocytes (By similarity). Its neurotrophic activity is exerted via MAPK1/ERK2, MAPK3/ERK1 and AKT1/AKT pathways (By similarity). Neurotrophic activity is enhanced by binding to heme (By similarity). Acts also as an anorexigenic neurotrophic factor that contributes to energy balance (By similarity).

**Cellular Location**

Secreted, extracellular space. Mitochondrion. Endoplasmic reticulum. Note=Localized to mitochondria and endoplasmic reticulum by PINK1 and PARK7

**Tissue Location**

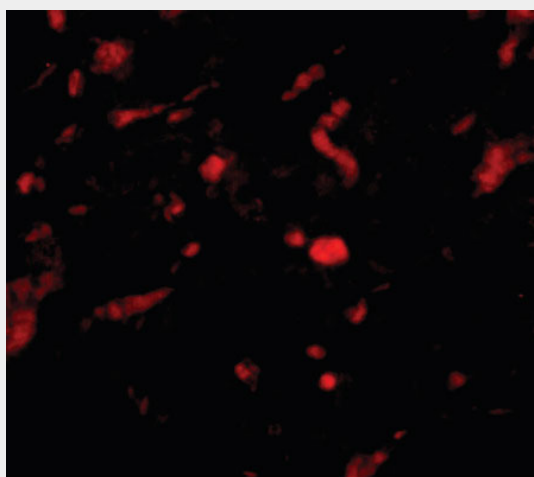
Ubiquitously expressed with high expression in heart. Over-expressed in various tumors including carcinomas of the uterine cervix, lymphoma, colon, lung, skin and leukemia, as well as carcinoma of the breast.

### **NENF / Neudesin Antibody (C-Terminus) - Protocols**

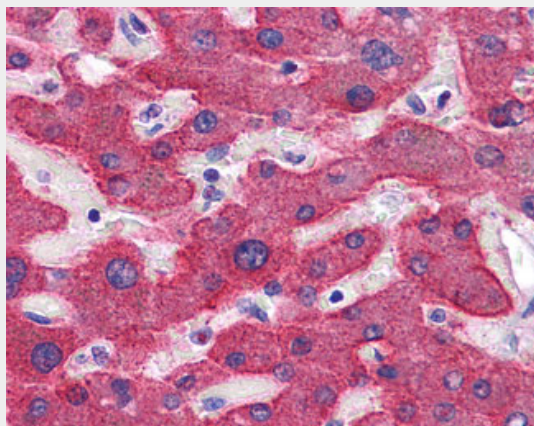
Provided below are standard protocols that you may find useful for product applications.

- [Western Blot](#)
- [Blocking Peptides](#)
- [Dot Blot](#)
- [Immunohistochemistry](#)
- [Immunofluorescence](#)
- [Immunoprecipitation](#)
- [Flow Cytometry](#)
- [Cell Culture](#)

### **NENF / Neudesin Antibody (C-Terminus) - Images**



Immunofluorescence of NENF in rat kidney tissue with NENF antibody at 20 ug/ml.



Anti-NENF antibody IHC of human liver.

### **NENF / Neudesin Antibody (C-Terminus) - Background**

Displays neurotrophic activity and activates phosphorylation of MAPK1/ERK2, MAPK3/ERK1 and

AKT1/AKT in primary cultured neurons. Does not have mitogenic activity in primary cultured astrocytes. May play a role on neuronal differentiation and may have a transient effect on neural cell proliferation in neural precursor cells. Neurotrophic activity is enhanced by binding to heme (By similarity).

#### **NENF / Neudesin Antibody (C-Terminus) - References**

Kimura I.,et al.J. Neurosci. Res. 79:287-294(2005).  
Rasheed Z.A.,et al.Submitted (JUL-1999) to the EMBL/GenBank/DDBJ databases.  
Kim J.W.,et al.Submitted (SEP-2004) to the EMBL/GenBank/DDBJ databases.  
Suzuki Y.,et al.Submitted (APR-2005) to the EMBL/GenBank/DDBJ databases.  
Mural R.J.,et al.Submitted (SEP-2005) to the EMBL/GenBank/DDBJ databases.