

**MTCH2 Antibody (N-Terminus)**  
**Rabbit Polyclonal Antibody**  
**Catalog # ALS13737****Specification**

---

**MTCH2 Antibody (N-Terminus) - Product Information**

Application	WB, IHC-P, IF, E
Primary Accession	<a href="#">O9Y6C9</a>
Reactivity	Human, Mouse
Host	Rabbit
Clonality	Polyclonal
Calculated MW	33kDa KDa
Dilution	WB~~1:1000 IHC-P~~N/A IF~~1:50~200 E~~N/A

**MTCH2 Antibody (N-Terminus) - Additional Information****Gene ID** 23788**Other Names**

Mitochondrial carrier homolog 2, Met-induced mitochondrial protein, MTCH2, MIMP

**Target/Specificity**

Human MTCH2

**Reconstitution & Storage**

Short term 4°C, long term aliquot and store at -20°C, avoid freeze thaw cycles. Store undiluted.

**Precautions**

MTCH2 Antibody (N-Terminus) is for research use only and not for use in diagnostic or therapeutic procedures.

**MTCH2 Antibody (N-Terminus) - Protein Information****Name** MTCH2 {ECO:0000303|PubMed:36264797, ECO:0000312|HGNC:HGNC:17587}**Function**

Protein insertase that mediates insertion of transmembrane proteins into the mitochondrial outer membrane (PubMed: <http://www.uniprot.org/citations/36264797> target="\_blank">36264797</a>). Catalyzes insertion of proteins with alpha-helical transmembrane regions, such as signal-anchored, tail-anchored and multi-pass membrane proteins (PubMed: <http://www.uniprot.org/citations/36264797> target="\_blank">36264797</a>). Does not mediate insertion of beta-barrel transmembrane proteins (PubMed: <http://www.uniprot.org/citations/36264797> target="\_blank">36264797</a>). Also acts as a receptor for the truncated form of pro-apoptotic BH3-interacting domain death agonist (p15 BID) and has therefore a critical function in apoptosis

(By similarity). Regulates the quiescence/cycling of hematopoietic stem cells (HSCs) (By similarity). Acts as a regulator of mitochondrial fusion, essential for the naive-to-primed interconversion of embryonic stem cells (ESCs) (By similarity). Acts as a regulator of lipid homeostasis and has a regulatory role in adipocyte differentiation and biology (By similarity).

#### Cellular Location

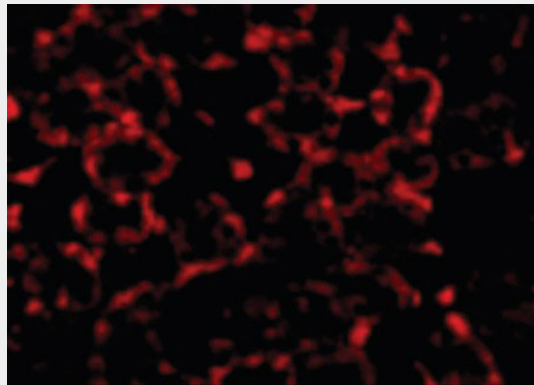
Mitochondrion outer membrane; Multi-pass membrane protein

#### MTCH2 Antibody (N-Terminus) - Protocols

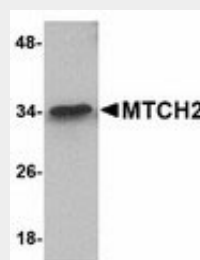
Provided below are standard protocols that you may find useful for product applications.

- [Western Blot](#)
- [Blocking Peptides](#)
- [Dot Blot](#)
- [Immunohistochemistry](#)
- [Immunofluorescence](#)
- [Immunoprecipitation](#)
- [Flow Cytometry](#)
- [Cell Culture](#)

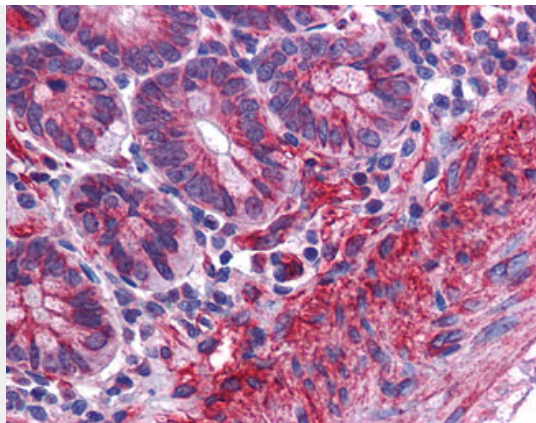
#### MTCH2 Antibody (N-Terminus) - Images



Immunofluorescence of MTCH2 in Mouse Kidney cells with MTCH2 antibody at 20 ug/ml.



Western blot of MTCH2 in 293 cell lysate with MTCH2 antibody at 1 ug/ml.



Anti-MTCH2 antibody IHC of human small intestine.

### **MTCH2 Antibody (N-Terminus) - Background**

The substrate transported is not yet known. Induces mitochondrial depolarization.

### **MTCH2 Antibody (N-Terminus) - References**

- Yerushalmi G.M.,et al.Neoplasia 4:510-522(2002).  
Jang J.S.,et al.Submitted (AUG-1999) to the EMBL/GenBank/DDBJ databases.  
Zhang Q.-H.,et al.Genome Res. 10:1546-1560(2000).  
Ota T.,et al.Nat. Genet. 36:40-45(2004).  
Mural R.J.,et al.Submitted (SEP-2005) to the EMBL/GenBank/DDBJ databases.