

RGS21 Antibody (Internal)
Rabbit Polyclonal Antibody
Catalog # ALS13748**Specification**

RGS21 Antibody (Internal) - Product Information

Application	ICC, IF, WB, IHC
Primary Accession	Q2M5E4
Reactivity	Human
Host	Rabbit
Clonality	Polyclonal
Calculated MW	18kDa KDa

RGS21 Antibody (Internal) - Additional Information**Gene ID** 431704**Other Names**

Regulator of G-protein signaling 21, RGS21, RGS21

Target/Specificity

Human RGS21

Reconstitution & Storage

Short term 4°C, long term aliquot and store at -20°C, avoid freeze thaw cycles. Store undiluted.

Precautions

RGS21 Antibody (Internal) is for research use only and not for use in diagnostic or therapeutic procedures.

RGS21 Antibody (Internal) - Protein Information**Name** RGS21**Function**

Inhibits signal transduction by increasing the GTPase activity of G protein alpha subunits thereby driving them into their inactive GDP-bound form.

Tissue Location

Expressed ubiquitously.

RGS21 Antibody (Internal) - Protocols

Provided below are standard protocols that you may find useful for product applications.

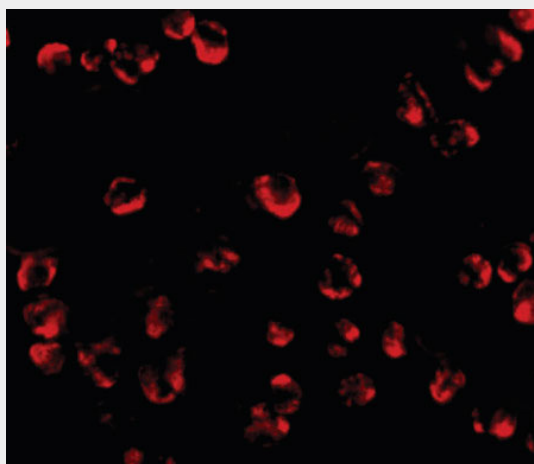
- [Western Blot](#)

- [Blocking Peptides](#)
- [Dot Blot](#)
- [Immunohistochemistry](#)
- [Immunofluorescence](#)
- [Immunoprecipitation](#)
- [Flow Cytometry](#)
- [Cell Culture](#)

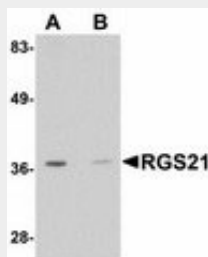
RGS21 Antibody (Internal) - Images



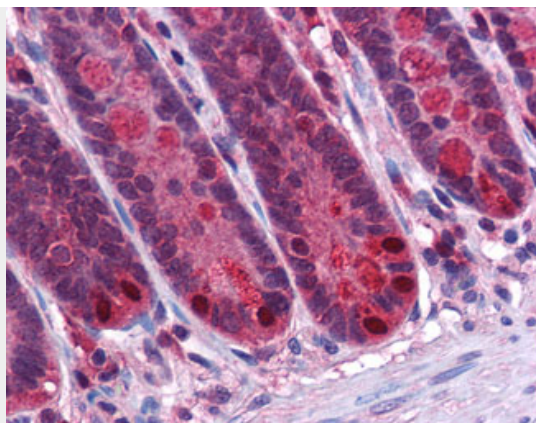
Immunocytochemistry of RGS21 in HepG2 cells with RGS21 antibody at 2.5 ug/ml.



Immunofluorescence of RGS21 in HepG2 cells with RGS21 antibody at 20 ug/ml.



Western blot of RGS21 in HepG2 cell lysate with RGS21 antibody at 0.5 ug/ml in (A) the absence...



Anti-RGS21 antibody IHC of human small intestine.

RGS21 Antibody (Internal) - Background

Inhibits signal transduction by increasing the GTPase activity of G protein alpha subunits thereby driving them into their inactive GDP-bound form.

RGS21 Antibody (Internal) - References

Li X., et al. Acta Biochim. Pol. 52:943-946(2005).