

**Histone H4 Antibody (Di-Methyl-Lys20)**  
**Mouse Monoclonal Antibody**  
**Catalog # ALS13768****Specification**

---

**Histone H4 Antibody (Di-Methyl-Lys20) - Product Information**

Application	IHC
Reactivity	Human, Mouse, Rat, Bovine
Host	Mouse
Clonality	Monoclonal

**Histone H4 Antibody (Di-Methyl-Lys20) - Additional Information****Target/Specificity**

Recognizes methyl-Histone H4, Mr 10kD. Species cross-reactivity: Human, mouse, rat, and bovine. Broad species Cross-reactivity predicted based on conservation of sequence. Does not cross-react with yeast or Tetrahymena.

**Reconstitution & Storage**

May be stored at 4°C for short-term only. Aliquot to avoid repeated freezing and thawing. Store at -20°C. Aliquots are stable for at least 12 months

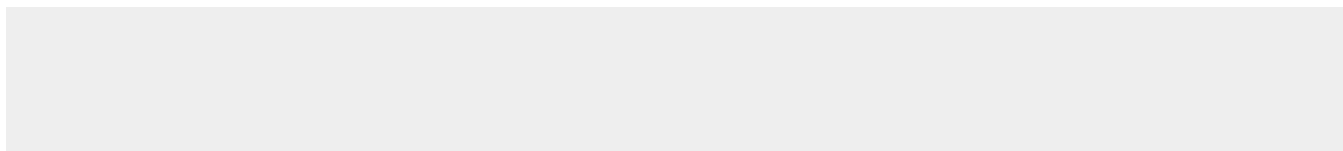
**Precautions**

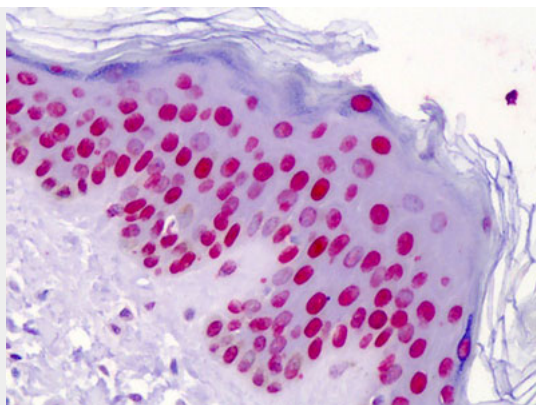
Histone H4 Antibody (Di-Methyl-Lys20) is for research use only and not for use in diagnostic or therapeutic procedures.

**Histone H4 Antibody (Di-Methyl-Lys20) - Protein Information****Histone H4 Antibody (Di-Methyl-Lys20) - Protocols**

Provided below are standard protocols that you may find useful for product applications.

- [Western Blot](#)
- [Blocking Peptides](#)
- [Dot Blot](#)
- [Immunohistochemistry](#)
- [Immunofluorescence](#)
- [Immunoprecipitation](#)
- [Flow Cytometry](#)
- [Cell Culture](#)

**Histone H4 Antibody (Di-Methyl-Lys20) - Images**



Anti-Histone H4 antibody IHC of human skin.