

SLC37A2 Antibody (Internal)
Rabbit Polyclonal Antibody
Catalog # ALS13816**Specification**

SLC37A2 Antibody (Internal) - Product Information

Application	IF, WB, IHC
Primary Accession	Q8TED4
Reactivity	Human, Mouse, Rat
Host	Rabbit
Clonality	Polyclonal
Calculated MW	54kDa KDa

SLC37A2 Antibody (Internal) - Additional Information**Gene ID** 219855**Other Names**

Sugar phosphate exchanger 2, Solute carrier family 37 member 2, SLC37A2, SPX2

Target/Specificity

Human SLC37A2

Reconstitution & Storage

Short term 4°C, long term aliquot and store at -20°C, avoid freeze thaw cycles. Store undiluted.

Precautions

SLC37A2 Antibody (Internal) is for research use only and not for use in diagnostic or therapeutic procedures.

SLC37A2 Antibody (Internal) - Protein Information**Name** SLC37A2 ([HGNC:20644](#))**Function**

Inorganic phosphate and glucose-6-phosphate antiporter. May transport cytoplasmic glucose-6-phosphate into the lumen of the endoplasmic reticulum and translocate inorganic phosphate into the opposite direction. Independent of a luminal glucose-6-phosphatase. May not play a role in homeostatic regulation of blood glucose levels.

Cellular Location

Endoplasmic reticulum membrane; Multi-pass membrane protein

Tissue Location

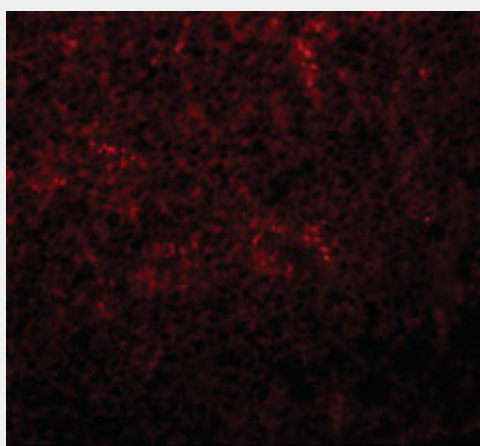
Detected in intestine and pancreas. Lower expression is also detected in liver and kidney

SLC37A2 Antibody (Internal) - Protocols

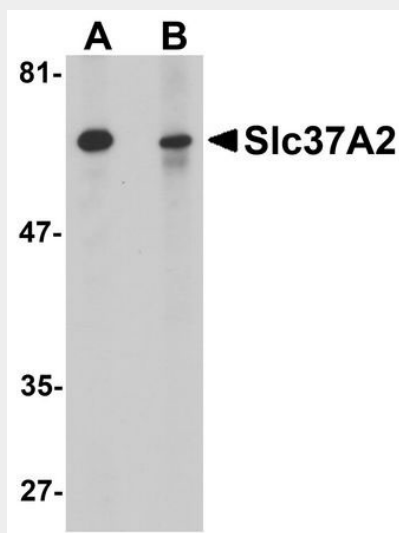
Provided below are standard protocols that you may find useful for product applications.

- [Western Blot](#)
- [Blocking Peptides](#)
- [Dot Blot](#)
- [Immunohistochemistry](#)
- [Immunofluorescence](#)
- [Immunoprecipitation](#)
- [Flow Cytometry](#)
- [Cell Culture](#)

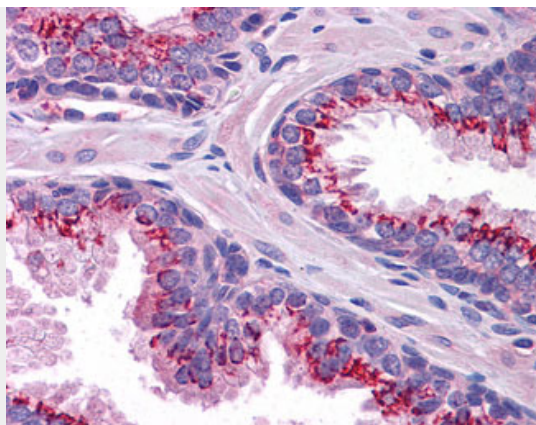
SLC37A2 Antibody (Internal) - Images



Immunofluorescence of Slc37A2 in rat spleen tissue with Slc37A2 antibody at 20 ug/ml.



Western blot analysis of Slc37A2 in mouse spleen tissue lysate with Slc37A2 antibody at 1 ug/ml...



Anti-SLC37A2 antibody IHC of human prostate.

SLC37A2 Antibody (Internal) - References

Jikuya H.,et al.DNA Res. 10:49-57(2003).

Ota T.,et al.Nat. Genet. 36:40-45(2004).

Mural R.J.,et al.Submitted (JUL-2005) to the EMBL/GenBank/DDBJ databases.