

Securin / PTTG1 Antibody (aa148-160)
Goat Polyclonal Antibody
Catalog # ALS13846**Specification**

Securin / PTTG1 Antibody (aa148-160) - Product Information

Application	IHC
Primary Accession	O95997
Reactivity	Human, Mouse, Monkey
Host	Goat
Clonality	Polyclonal
Calculated MW	22kDa KDa

Securin / PTTG1 Antibody (aa148-160) - Additional Information**Gene ID** 9232**Other Names**

Securin, Esp1-associated protein, Pituitary tumor-transforming gene 1 protein, Tumor-transforming protein 1, hPTTG, PTTG1, EAP1, PTTG, TUTR1

Target/Specificity

Human PTTG1.

Reconstitution & Storage

Store at -20°C. Minimize freezing and thawing.

Precautions

Securin / PTTG1 Antibody (aa148-160) is for research use only and not for use in diagnostic or therapeutic procedures.

Securin / PTTG1 Antibody (aa148-160) - Protein Information**Name** PTTG1**Synonyms** EAP1, PTTG, TUTR1**Function**

Regulatory protein, which plays a central role in chromosome stability, in the p53/TP53 pathway, and DNA repair. Probably acts by blocking the action of key proteins. During the mitosis, it blocks Separase/ESPL1 function, preventing the proteolysis of the cohesin complex and the subsequent segregation of the chromosomes. At the onset of anaphase, it is ubiquitinated, conducting to its destruction and to the liberation of ESPL1. Its function is however not limited to a blocking activity, since it is required to activate ESPL1. Negatively regulates the transcriptional activity and related apoptosis activity of TP53. The negative regulation of TP53 may explain the strong transforming capability of the protein when it is overexpressed. May also play a role in DNA repair via its interaction with Ku, possibly by connecting DNA damage-response pathways with sister chromatid separation.

Cellular Location

Cytoplasm. Nucleus.

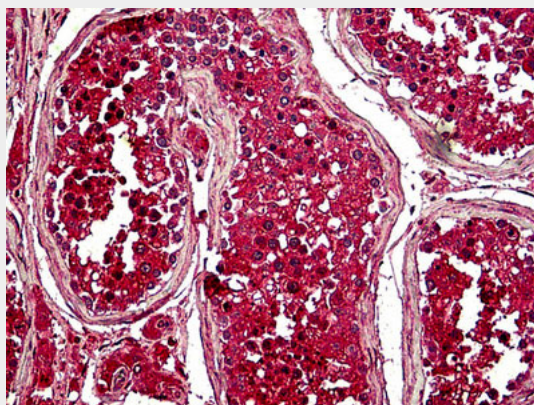
Tissue Location

Expressed at low level in most tissues, except in adult testis, where it is highly expressed.
Overexpressed in many patients suffering from pituitary adenomas, primary epithelial neoplasias, and esophageal cancer.

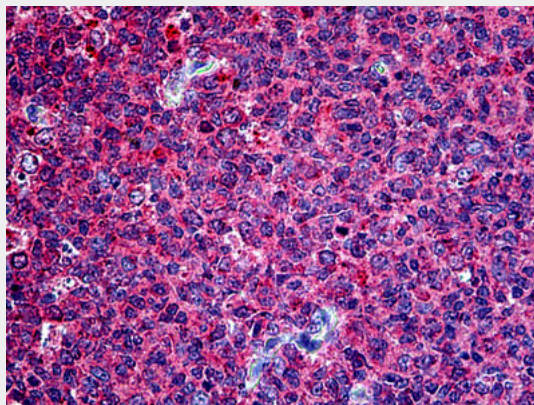
Securin / PTTG1 Antibody (aa148-160) - Protocols

Provided below are standard protocols that you may find useful for product applications.

- [Western Blot](#)
- [Blocking Peptides](#)
- [Dot Blot](#)
- [Immunohistochemistry](#)
- [Immunofluorescence](#)
- [Immunoprecipitation](#)
- [Flow Cytometry](#)
- [Cell Culture](#)

Securin / PTTG1 Antibody (aa148-160) - Images

Anti-PTTG1 / Securin antibody IHC of human testis.



Anti-PTTG1 / Securin antibody IHC of human tonsil.

Securin / PTTG1 Antibody (aa148-160) - Background

Regulatory protein, which plays a central role in chromosome stability, in the p53/TP53 pathway, and DNA repair. Probably acts by blocking the action of key proteins. During the mitosis, it blocks Separase/ESPL1 function, preventing the proteolysis of the cohesin complex and the subsequent segregation of the chromosomes. At the onset of anaphase, it is ubiquitinated, conducting to its destruction and to the liberation of ESPL1. Its function is however not limited to a blocking activity, since it is required to activate ESPL1. Negatively regulates the transcriptional activity and related apoptosis activity of TP53. The negative regulation of TP53 may explain the strong transforming capability of the protein when it is overexpressed. May also play a role in DNA repair via its interaction with Ku, possibly by connecting DNA damage-response pathways with sister chromatid separation.

Securin / PTTG1 Antibody (aa148-160) - References

Dominguez A.,et al.Oncogene 17:2187-2193(1998).
Mu Y.,et al.Submitted (SEP-1998) to the EMBL/GenBank/DDBJ databases.
Kakar S.S.,et al.Cytogenet. Cell Genet. 84:211-216(1999).
Kakar S.S.,et al.Gene 240:317-324(1999).
Zhang X.,et al.Mol. Endocrinol. 13:156-166(1999).