

**TINF2 Antibody (aa341-354)**  
**Goat Polyclonal Antibody**  
**Catalog # ALS13851****Specification**

---

**TINF2 Antibody (aa341-354) - Product Information**

|                   |                        |
|-------------------|------------------------|
| Application       | IHC                    |
| Primary Accession | <a href="#">Q9BSI4</a> |
| Reactivity        | Human, Monkey          |
| Host              | Goat                   |
| Clonality         | Polyclonal             |
| Calculated MW     | 50kDa KDa              |

**TINF2 Antibody (aa341-354) - Additional Information****Gene ID** 26277**Other Names**

TERF1-interacting nuclear factor 2, TRF1-interacting nuclear protein 2, TINF2, TIN2

**Target/Specificity**

Human TINF2.

**Reconstitution & Storage**

Store at -20°C. Minimize freezing and thawing.

**Precautions**

TINF2 Antibody (aa341-354) is for research use only and not for use in diagnostic or therapeutic procedures.

**TINF2 Antibody (aa341-354) - Protein Information****Name** TINF2**Synonyms** TIN2**Function**

Component of the shelterin complex (telosome) that is involved in the regulation of telomere length and protection. Shelterin associates with arrays of double-stranded TTAGGG repeats added by telomerase and protects chromosome ends; without its protective activity, telomeres are no longer hidden from the DNA damage surveillance and chromosome ends are inappropriately processed by DNA repair pathways. Plays a role in shelterin complex assembly. Isoform 1 may have additional role in tethering telomeres to the nuclear matrix.

**Cellular Location**

Nucleus. Chromosome, telomere. Note=Associated with telomeres

**Tissue Location**

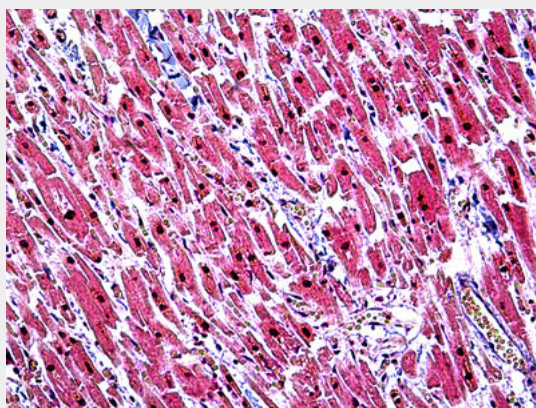
Detected in heart, brain, placenta, lung, liver, skeletal muscle, kidney and pancreas

### **TINF2 Antibody (aa341-354) - Protocols**

Provided below are standard protocols that you may find useful for product applications.

- [Western Blot](#)
- [Blocking Peptides](#)
- [Dot Blot](#)
- [Immunohistochemistry](#)
- [Immunofluorescence](#)
- [Immunoprecipitation](#)
- [Flow Cytometry](#)
- [Cell Culture](#)

### **TINF2 Antibody (aa341-354) - Images**



Anti-TINF2 antibody IHC of human heart.

### **TINF2 Antibody (aa341-354) - Background**

Component of the shelterin complex (telosome) that is involved in the regulation of telomere length and protection. Shelterin associates with arrays of double-stranded TTAGGG repeats added by telomerase and protects chromosome ends; without its protective activity, telomeres are no longer hidden from the DNA damage surveillance and chromosome ends are inappropriately processed by DNA repair pathways. Plays a role in shelterin complex assembly. Isoform 1 may have additional role in tethering telomeres to the nuclear matrix.

### **TINF2 Antibody (aa341-354) - References**

Kim S.-H., et al. Nat. Genet. 23:405-412(1999).  
Ota T., et al. Nat. Genet. 36:40-45(2004).  
Kaminker P.G., et al. Submitted (JUN-2008) to the EMBL/GenBank/DDBJ databases.  
Loayza D., et al. Nature 423:1013-1018(2003).  
Ye J.Z.-S., et al. Genes Dev. 18:1649-1654(2004).