

CLCN2 Antibody (aa738-751)
Goat Polyclonal Antibody
Catalog # ALS13866**Specification**

CLCN2 Antibody (aa738-751) - Product Information

Application	IHC
Primary Accession	P51788
Reactivity	Human
Host	Goat
Clonality	Polyclonal
Calculated MW	99kDa KDa

CLCN2 Antibody (aa738-751) - Additional Information**Gene ID** 1181**Other Names**

Chloride channel protein 2, CIC-2, CLCN2

Target/Specificity

Human CLCN2. This antibody is expected to recognize all reported isoforms (NP_004357.3; NP_001164558.1; NP_001164559.1; NP_001164560.1).

Reconstitution & Storage

Store at -20°C. Minimize freezing and thawing.

Precautions

CLCN2 Antibody (aa738-751) is for research use only and not for use in diagnostic or therapeutic procedures.

CLCN2 Antibody (aa738-751) - Protein Information**Name** CLCN2**Function**

Voltage-gated chloride channel. Chloride channels have several functions including the regulation of cell volume, membrane potential stabilization, signal transduction and transepithelial transport. Involved in the regulation of aldosterone production. The opening of CLCN2 channels at hyperpolarized membrane potentials in the glomerulosa causes cell membrane depolarization, activation of voltage-gated Ca²⁺ channels and increased expression of aldosterone synthase, the rate-limiting enzyme for aldosterone biosynthesis (PubMed:29403011, PubMed:29403012).

Cellular Location

Cell membrane; Multi-pass membrane protein

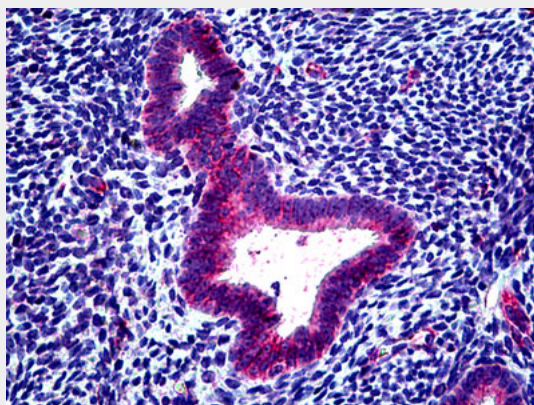
Tissue Location

Ubiquitously expressed. Moderately expressed in aortic and coronary vascular smooth muscle cells and expressed at a low level in aortic endothelial cells. Expressed in the adrenal gland, predominantly in the zona glomerulosa (PubMed:29403011)

CLCN2 Antibody (aa738-751) - Protocols

Provided below are standard protocols that you may find useful for product applications.

- [Western Blot](#)
- [Blocking Peptides](#)
- [Dot Blot](#)
- [Immunohistochemistry](#)
- [Immunofluorescence](#)
- [Immunoprecipitation](#)
- [Flow Cytometry](#)
- [Cell Culture](#)

CLCN2 Antibody (aa738-751) - Images

Anti-CLCN2 antibody IHC of human uterus.

CLCN2 Antibody (aa738-751) - Background

Voltage-gated chloride channel. Chloride channels have several functions including the regulation of cell volume; membrane potential stabilization, signal transduction and transepithelial transport.

CLCN2 Antibody (aa738-751) - References

- Cid L.P.,et al.Hum. Mol. Genet. 4:407-413(1995).
Rae J.L.,et al.Submitted (SEP-1997) to the EMBL/GenBank/DDBJ databases.
Ota T.,et al.Nat. Genet. 36:40-45(2004).
Muzny D.M.,et al.Nature 440:1194-1198(2006).
Lamb F.S.,et al.J. Mol. Cell. Cardiol. 31:657-666(1999).