

INHA / Inhibin Alpha Antibody
Rabbit Polyclonal Antibody
Catalog # ALS13903**Specification**

INHA / Inhibin Alpha Antibody - Product Information

Application	IHC-P
Primary Accession	P05111
Reactivity	Human
Host	Rabbit
Clonality	Polyclonal
Calculated MW	40kDa KDa
Dilution	IHC-P~~N/A

INHA / Inhibin Alpha Antibody - Additional Information**Gene ID** 3623**Other Names**

Inhibin alpha chain, INHA

Reconstitution & Storage

Store at 2°C to 8°C degrees. Do not freeze.

Precautions

INHA / Inhibin Alpha Antibody is for research use only and not for use in diagnostic or therapeutic procedures.

INHA / Inhibin Alpha Antibody - Protein Information**Name** INHA**Function**

Inhibins and activins inhibit and activate, respectively, the secretion of follitropin by the pituitary gland. Inhibins/activins are involved in regulating a number of diverse functions such as hypothalamic and pituitary hormone secretion, gonadal hormone secretion, germ cell development and maturation, erythroid differentiation, insulin secretion, nerve cell survival, embryonic axial development or bone growth, depending on their subunit composition. Inhibins appear to oppose the functions of activins. Inhibin B is a dimer of alpha and beta-B that plays a crucial role in the regulation of the reproductive system by inhibiting the secretion of follicle-stimulating hormone (FSH) from the anterior pituitary gland. Thereby, maintains reproductive homeostasis in both males and females. Acts as a more potent suppressor of FSH release than inhibin A (By similarity). Functions as competitive receptor antagonist binding activin type II receptors with high affinity in the presence of the TGF-beta type III coreceptor/TGFBR3L (PubMed:34910520).

Cellular Location

Secreted {ECO:0000250|UniProtKB:P17490}.

Tissue Location

Originally found in ovary (granulosa cells) and testis (Sertoli cells), but widely distributed in many tissues including brain and placenta. In adrenal cortex expression is limited to the zona reticularis and the innermost zona fasciculata in the normal gland, extending centripetally into the zona fasciculata in hyperplasia. Also found in adrenocortical tumors. Also expressed in prostate epithelium of benign prostatic hyperplasia, in regions of basal cell hyperplasia and in nonmalignant regions of high grade prostate cancer. Only circulating inhibin B is found in male, whereas circulating inhibins A and B are found in female

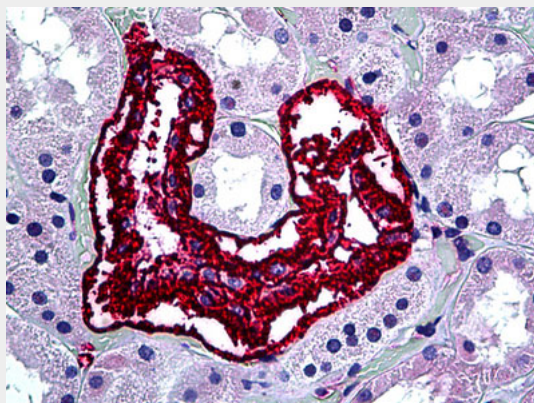
Volume

50 µl

INHA / Inhibin Alpha Antibody - Protocols

Provided below are standard protocols that you may find useful for product applications.

- [Western Blot](#)
- [Blocking Peptides](#)
- [Dot Blot](#)
- [Immunohistochemistry](#)
- [Immunofluorescence](#)
- [Immunoprecipitation](#)
- [Flow Cytometry](#)
- [Cell Culture](#)

INHA / Inhibin Alpha Antibody - Images

Anti-INHA / Inhibin Alpha antibody IHC of human kidney.

INHA / Inhibin Alpha Antibody - Background

Inhibins and activins inhibit and activate, respectively, the secretion of follitropin by the pituitary gland. Inhibins/activins are involved in regulating a number of diverse functions such as hypothalamic and pituitary hormone secretion, gonadal hormone secretion, germ cell development and maturation, erythroid differentiation, insulin secretion, nerve cell survival, embryonic axial development or bone growth, depending on their subunit composition. Inhibins appear to oppose the functions of activins.

INHA / Inhibin Alpha Antibody - References

Mayo K.E., et al. Proc. Natl. Acad. Sci. U.S.A. 83:5849-5853(1986).

Stewart A.G.,et al.FEBS Lett. 206:329-334(1986).

Kalnina N.,et al.Submitted (OCT-2004) to the EMBL/GenBank/DDBJ databases.

Ota T.,et al.Nat. Genet. 36:40-45(2004).

Mural R.J.,et al.Submitted (JUL-2005) to the EMBL/GenBank/DDBJ databases.