

**CD59 Antibody**  
**Rat Monoclonal Antibody**  
**Catalog # ALS13924****Specification**

---

**CD59 Antibody - Product Information**

Application	IHC
Primary Accession	<a href="#">P13987</a>
Reactivity	Human
Host	Rat
Clonality	Monoclonal
Calculated MW	14kDa KDa

**CD59 Antibody - Additional Information****Gene ID** 966**Other Names**

CD59 glycoprotein, 1F5 antigen, 20 kDa homologous restriction factor, HRF-20, HRF20, MAC-inhibitory protein, MAC-IP, MEM43 antigen, Membrane attack complex inhibition factor, MACIF, Membrane inhibitor of reactive lysis, MIRL, Protectin, CD59, CD59, MIC11, MIN1, MIN2, MIN3, MSK21

**Target/Specificity**

Recognizes the human CD59 cell surface antigen, an 18-20kD GPI linked glycoprotein broadly expressed by human leucocytes and erythrocytes. Clone YTH53.1 has been shown to block the normal function of CD59. Removal of sodium azide is recommended prior ...

**Reconstitution & Storage**

+4°C or -20°C, Avoid repeated freezing and thawing.

**Precautions**

CD59 Antibody is for research use only and not for use in diagnostic or therapeutic procedures.

**CD59 Antibody - Protein Information****Name** CD59**Synonyms** MIC11, MIN1, MIN2, MIN3, MSK21**Function**

Potent inhibitor of the complement membrane attack complex (MAC) action. Acts by binding to the C8 and/or C9 complements of the assembling MAC, thereby preventing incorporation of the multiple copies of C9 required for complete formation of the osmolytic pore. This inhibitor appears to be species-specific. Involved in signal transduction for T-cell activation complexed to a protein tyrosine kinase.

**Cellular Location**

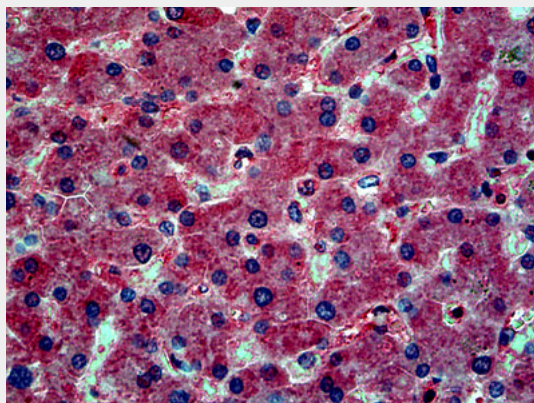
Cell membrane; Lipid-anchor, GPI-anchor. Secreted. Note=Soluble form found in a number of tissues

### CD59 Antibody - Protocols

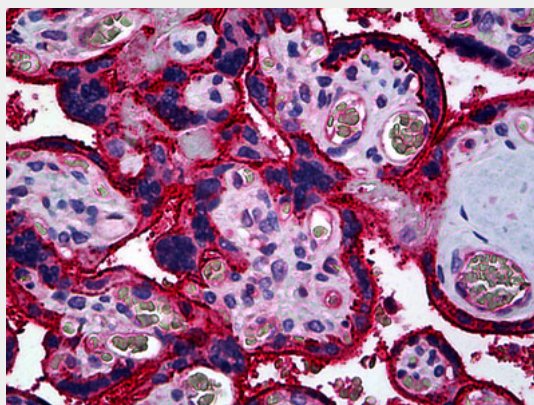
Provided below are standard protocols that you may find useful for product applications.

- [Western Blot](#)
- [Blocking Peptides](#)
- [Dot Blot](#)
- [Immunohistochemistry](#)
- [Immunofluorescence](#)
- [Immunoprecipitation](#)
- [Flow Cytometry](#)
- [Cell Culture](#)

### CD59 Antibody - Images



Anti-CD59 antibody IHC of human liver.



Anti-CD59 antibody IHC of human placenta.

### CD59 Antibody - Background

Potent inhibitor of the complement membrane attack complex (MAC) action. Acts by binding to the C8 and/or C9 complements of the assembling MAC, thereby preventing incorporation of the multiple copies of C9 required for complete formation of the osmolytic pore. This inhibitor appears to be species-specific. Involved in signal transduction for T-cell activation complexed to a protein tyrosine

kinase.

### **CD59 Antibody - References**

Davies A.,et al.J. Exp. Med. 170:637-654(1989).  
Philbrick W.M.,et al.Eur. J. Immunol. 20:87-92(1990).  
Okada H.,et al.Biochem. Biophys. Res. Commun. 162:1553-1559(1989).  
Sugita Y.,et al.J. Biochem. 106:555-557(1989).  
Sawada R.,et al.DNA Cell Biol. 9:213-220(1990).