

CD34 Antibody (clone QBEnd/10, Azide-free)
Mouse Monoclonal Antibody
Catalog # ALS13933**Specification**

CD34 Antibody (clone QBEnd/10, Azide-free) - Product Information

Application	IHC
Primary Accession	P28906
Reactivity	Human, Monkey
Host	Mouse
Clonality	Monoclonal
Calculated MW	41kDa KDa

CD34 Antibody (clone QBEnd/10, Azide-free) - Additional Information**Gene ID** 947**Other Names**

Hematopoietic progenitor cell antigen CD34, CD34, CD34

Target/Specificity

The antibody QBEnd-10 reacts with Class II epitope on CD34 (Mucosialin), a 110-115 kD monomeric transmembrane phosphoglycoprotein expressed on hematopoietic progenitors cells and on the most pluripotential stem cells; it is gradually lost on progenit ...

Reconstitution & Storage

Short term 4°C, long term aliquot and store at -20°C, avoid freeze thaw cycles.

Precautions

CD34 Antibody (clone QBEnd/10, Azide-free) is for research use only and not for use in diagnostic or therapeutic procedures.

CD34 Antibody (clone QBEnd/10, Azide-free) - Protein Information**Name** CD34**Function**

Possible adhesion molecule with a role in early hematopoiesis by mediating the attachment of stem cells to the bone marrow extracellular matrix or directly to stromal cells. Could act as a scaffold for the attachment of lineage specific glycans, allowing stem cells to bind to lectins expressed by stromal cells or other marrow components. Presents carbohydrate ligands to selectins.

Cellular Location

Membrane; Single-pass type I membrane protein.

Tissue Location

Selectively expressed on hematopoietic progenitor cells and the small vessel endothelium of a

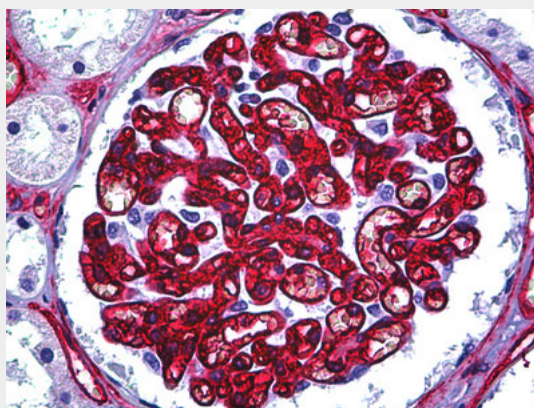
variety of tissues

CD34 Antibody (clone QBEnd/10, Azide-free) - Protocols

Provided below are standard protocols that you may find useful for product applications.

- [Western Blot](#)
- [Blocking Peptides](#)
- [Dot Blot](#)
- [Immunohistochemistry](#)
- [Immunofluorescence](#)
- [Immunoprecipitation](#)
- [Flow Cytometry](#)
- [Cell Culture](#)

CD34 Antibody (clone QBEnd/10, Azide-free) - Images



Anti-CD34 antibody IHC of human kidney, glomerulus.

CD34 Antibody (clone QBEnd/10, Azide-free) - Background

Possible adhesion molecule with a role in early hematopoiesis by mediating the attachment of stem cells to the bone marrow extracellular matrix or directly to stromal cells. Could act as a scaffold for the attachment of lineage specific glycans, allowing stem cells to bind to lectins expressed by stromal cells or other marrow components. Presents carbohydrate ligands to selectins.

CD34 Antibody (clone QBEnd/10, Azide-free) - References

Simmons D.L.,et al.J. Immunol. 148:267-271(1992).
Satterthwaite A.B.,et al.Genomics 12:788-794(1992).
Nakamura Y.,et al.Exp. Hematol. 21:236-242(1993).
Freund D.,et al.Submitted (JUN-2002) to the EMBL/GenBank/DDBJ databases.
Ota T.,et al.Nat. Genet. 36:40-45(2004).