

BANP Antibody (Internal)
Rabbit Polyclonal Antibody
Catalog # ALS13993**Specification**

BANP Antibody (Internal) - Product Information

Application	IF, WB, IHC
Primary Accession	Q8N9N5
Reactivity	Human, Mouse, Rat
Host	Rabbit
Clonality	Polyclonal
Calculated MW	56kDa KDa

BANP Antibody (Internal) - Additional Information**Gene ID** 54971**Other Names**

Protein BANP, BEN domain-containing protein 1, Btg3-associated nuclear protein, Scaffold/matrix-associated region-1-binding protein, BANP, BEND1, SMAR1

Target/Specificity

Human BANP

Reconstitution & Storage

Short term 4°C, long term aliquot and store at -20°C, avoid freeze thaw cycles. Store undiluted.

Precautions

BANP Antibody (Internal) is for research use only and not for use in diagnostic or therapeutic procedures.

BANP Antibody (Internal) - Protein Information**Name** BANP**Synonyms** BEND1, SMAR1**Function**

Controls V(D)J recombination during T-cell development by repressing T-cell receptor (TCR) beta enhancer function. Binds to scaffold/matrix attachment region beta (S/MARbeta), an ATC-rich DNA sequence located upstream of the TCR beta enhancer. Represses cyclin D1 transcription by recruiting HDAC1 to its promoter, thereby diminishing H3K9ac, H3S10ph and H4K8ac levels. Promotes TP53 activation, which causes cell cycle arrest (By similarity).

Cellular Location

Nucleus.

Tissue Location

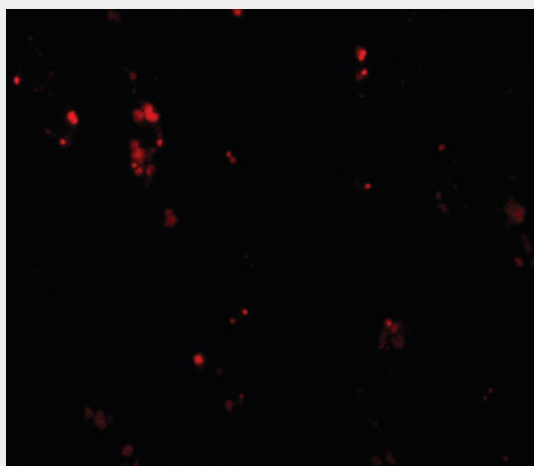
Down-regulated in breast cancer cell lines.

BANP Antibody (Internal) - Protocols

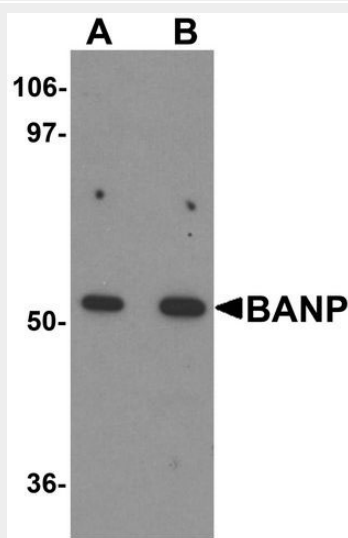
Provided below are standard protocols that you may find useful for product applications.

- [Western Blot](#)
- [Blocking Peptides](#)
- [Dot Blot](#)
- [Immunohistochemistry](#)
- [Immunofluorescence](#)
- [Immunoprecipitation](#)
- [Flow Cytometry](#)
- [Cell Culture](#)

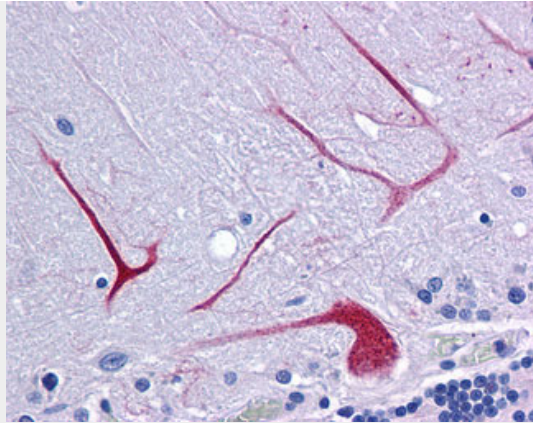
BANP Antibody (Internal) - Images



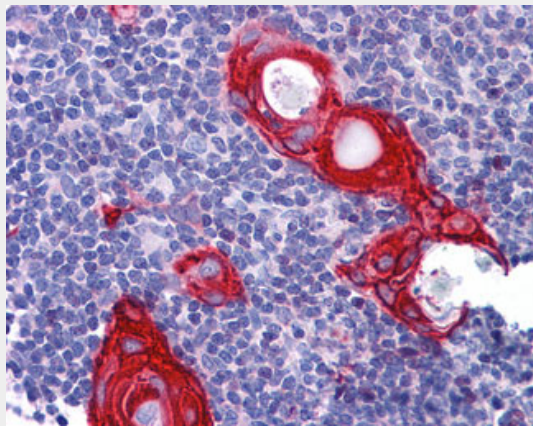
Immunofluorescence of BANP in human kidney tissue with BANP antibody at 20 ug/ml.



Western blot analysis of BANP in mouse kidney tissue lysate with BANP antibody at (A) 1 and (B)...



Anti-BANP antibody IHC of human brain, cerebellum.



Anti-BANP antibody IHC of human thymus.

BANP Antibody (Internal) - Background

Controls V(D)J recombination during T-cell development by repressing T-cell receptor (TCR) beta enhancer function. Binds to scaffold/matrix attachment region beta (S/MARbeta), an ATC-rich DNA sequence located upstream of the TCR beta enhancer. Represses cyclin D1 transcription by recruiting HDAC1 to its promoter, thereby diminishing H3K9ac, H3S10ph and H4K8ac levels. Promotes TP53 'Ser-15' phosphorylation and nuclear accumulation, which causes cell cycle arrest (By similarity).

BANP Antibody (Internal) - References

Ota T.,et al.Nat. Genet. 36:40-45(2004).
Martin J.,et al.Nature 432:988-994(2004).
Biro A.-M.,et al.Gene 253:189-196(2000).
Rampalli S.,et al.Mol. Cell. Biol. 25:8415-8429(2005).
Olsen J.V.,et al.Sci. Signal. 3:RA3-RA3(2010).