

SYNPO / Synaptopodin Antibody (C-Terminus)
Rabbit Polyclonal Antibody
Catalog # ALS14007**Specification**

SYNPO / Synaptopodin Antibody (C-Terminus) - Product Information

Application	WB, IHC-P, IF, E
Primary Accession	Q8N3V7
Reactivity	Human, Mouse, Rat
Host	Rabbit
Clonality	Polyclonal
Calculated MW	99kDa KDa
Dilution	WB~~1:1000 IHC-P~~N/A IF~~1:50~200 E~~N/A

SYNPO / Synaptopodin Antibody (C-Terminus) - Additional Information**Gene ID** 11346**Other Names**

Synaptopodin, SYNPO, KIAA1029

Target/Specificity

Human SYNPO

Reconstitution & Storage

Short term 4°C, long term aliquot and store at -20°C, avoid freeze thaw cycles. Store undiluted.

Precautions

SYNPO / Synaptopodin Antibody (C-Terminus) is for research use only and not for use in diagnostic or therapeutic procedures.

SYNPO / Synaptopodin Antibody (C-Terminus) - Protein Information**Name** SYNPO**Synonyms** KIAA1029**Function**

Actin-associated protein that may play a role in modulating actin-based shape and motility of dendritic spines and renal podocyte foot processes. Seems to be essential for the formation of spine apparatuses in spines of telencephalic neurons, which is involved in synaptic plasticity (By similarity).

Cellular Location

Cytoplasm, cytoskeleton {ECO:0000250|UniProtKB:Q8CC35}. Cell junction, tight junction

{ECO:0000250|UniProtKB:Q8CC35}. Perikaryon {ECO:0000250|UniProtKB:Q8CC35}. Cell projection, dendritic spine {ECO:0000250|UniProtKB:Q8CC35}. Postsynaptic density {ECO:0000250|UniProtKB:Q8CC35}. Synapse {ECO:0000250|UniProtKB:Q8CC35} Cytoplasm, cytosol. Note=Localized at the tight junction of cells. In brain, localized to the postsynaptic densities and in the perikarya. Associated with dendritic spines of a subset of synapses. {ECO:0000250|UniProtKB:Q8CC35}

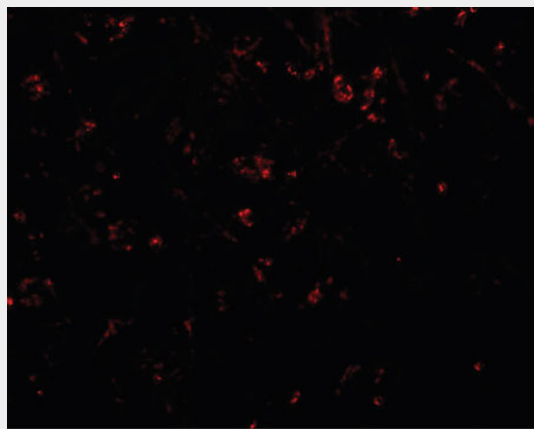
Tissue Location

Expressed in cerebral cortex.

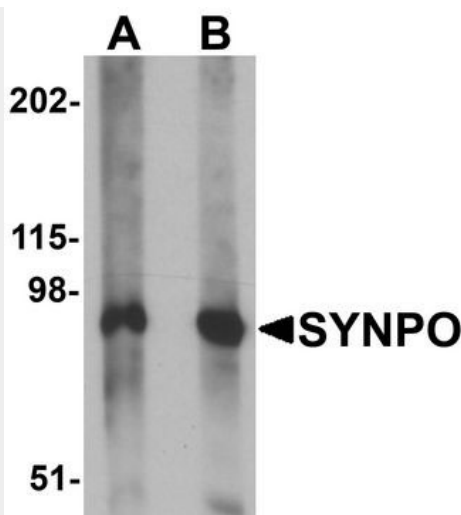
SYNPO / Synaptopodin Antibody (C-Terminus) - Protocols

Provided below are standard protocols that you may find useful for product applications.

- [Western Blot](#)
- [Blocking Peptides](#)
- [Dot Blot](#)
- [Immunohistochemistry](#)
- [Immunofluorescence](#)
- [Immunoprecipitation](#)
- [Flow Cytometry](#)
- [Cell Culture](#)

SYNPO / Synaptopodin Antibody (C-Terminus) - Images

Immunofluorescence of SYNPO in human brain tissue with SYNPO antibody at 20 ug/ml.



Western blot analysis of SYNPO in rat brain tissue lysate with SYNPO antibody at (A) 1 and (B) 2...

SYNPO / Synaptopodin Antibody (C-Terminus) - Background

Actin-associated protein that may play a role in modulating actin-based shape and motility of dendritic spines and renal podocyte foot processes. Seems to be essential for the formation of spine apparatuses in spines of telencephalic neurons, which is involved in synaptic plasticity (By similarity).

SYNPO / Synaptopodin Antibody (C-Terminus) - References

- Mundel P.,et al.J. Cell Biol. 139:193-204(1997).
- Reddy P.H.,et al.Submitted (APR-2002) to the EMBL/GenBank/DDBJ databases.
- Kikuno R.,et al.DNA Res. 6:197-205(1999).
- Ota T.,et al.Nat. Genet. 36:40-45(2004).
- Bechtel S.,et al.BMC Genomics 8:399-399(2007).