

CD48 Antibody (clone 3B8-2C2)
Mouse Monoclonal Antibody
Catalog # ALS14029**Specification**

CD48 Antibody (clone 3B8-2C2) - Product Information

Application	IHC
Primary Accession	P09326
Reactivity	Human
Host	Mouse
Clonality	Monoclonal
Calculated MW	28kDa KDa

CD48 Antibody (clone 3B8-2C2) - Additional Information**Gene ID** 962**Other Names**

CD48 antigen, B-lymphocyte activation marker BLAST-1, BCM1 surface antigen, Leukocyte antigen MEM-102, SLAM family member 2, SLAMF2, Signaling lymphocytic activation molecule 2, TCT.1, CD48, CD48, BCM1, BLAST1

Target/Specificity

Human CD48

Reconstitution & Storage

Short term 4°C, long term aliquot and store at -20°C, avoid freeze thaw cycles.

Precautions

CD48 Antibody (clone 3B8-2C2) is for research use only and not for use in diagnostic or therapeutic procedures.

CD48 Antibody (clone 3B8-2C2) - Protein Information**Name** CD48**Synonyms** BCM1, BLAST1**Function**

Glycosylphosphatidylinositol (GPI)-anchored cell surface glycoprotein that interacts via its N-terminal immunoglobulin domain with cell surface receptors including 2B4/CD244 or CD2 to regulate immune cell function and activation (PubMed:27249817, PubMed:12007789). Participates in T-cell signaling transduction by associating with CD2 and efficiently bringing the Src family protein kinase LCK and LAT to the TCR/CD3 complex (PubMed:19494291). In turn, promotes LCK phosphorylation and subsequent activation (PubMed:12007789). Induces the phosphorylation of the cytoplasmic immunoreceptor tyrosine switch motifs (ITSMs) of CD244 initiating a series of signaling events that leads to the generation of the immunological synapse and the directed release of cytolytic granules containing perforin and granzymes by T-lymphocytes and NK-cells (PubMed:9841922, PubMed:27249817).

Cellular Location

Cell membrane; Lipid-anchor, GPI-anchor. Secreted

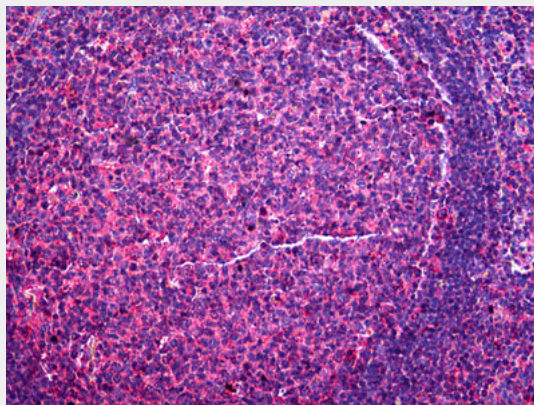
Tissue Location

Widely expressed on all hematopoietic cells.

CD48 Antibody (clone 3B8-2C2) - Protocols

Provided below are standard protocols that you may find useful for product applications.

- [Western Blot](#)
- [Blocking Peptides](#)
- [Dot Blot](#)
- [Immunohistochemistry](#)
- [Immunofluorescence](#)
- [Immunoprecipitation](#)
- [Flow Cytometry](#)
- [Cell Culture](#)

CD48 Antibody (clone 3B8-2C2) - Images

Anti-CD48 antibody IHC of human tonsil.

CD48 Antibody (clone 3B8-2C2) - Background

Ligand for CD2. Might facilitate interaction between activated lymphocytes. Probably involved in regulating T-cell activation.

CD48 Antibody (clone 3B8-2C2) - References

Vaughan H.A., et al. Immunogenetics 33:113-117(1991).
Korinek V., et al. Immunogenetics 33:108-112(1991).
Staunton D.E., et al. EMBO J. 6:3695-3701(1987).

Kalnina N., et al. Submitted (OCT-2004) to the EMBL/GenBank/DDBJ databases.
Gregory S.G., et al. Nature 441:315-321(2006).