

**APOH / Apolipoprotein H Antibody**  
**Goat Polyclonal Antibody**  
**Catalog # ALS14137****Specification**

---

**APOH / Apolipoprotein H Antibody - Product Information**

Application	IHC-P, E, ID, IE
Primary Accession	<a href="#">P02749</a>
Reactivity	Human, Rat, Pig, Dog
Host	Goat
Clonality	Polyclonal
Calculated MW	38kDa KDa
Dilution	IHC-P~~N/A E~~N/A ID~~N/A IE~~N/A

**APOH / Apolipoprotein H Antibody - Additional Information****Gene ID** 350**Other Names**

Beta-2-glycoprotein 1, APC inhibitor, Activated protein C-binding protein, Anticardiolipin cofactor, Apolipoprotein H, Apo-H, Beta-2-glycoprotein I, B2GPI, Beta(2)GPI, APOH, B2G1

**Target/Specificity**

Recognizes human beta2GP-I as demonstrated by immunoelectrophoresis. A single precipitin arc is observed with normal plasma. No arc was seen with beta2GP-I deficient plasma. Species cross-reactivity: Porcine, rat and canine.

**Reconstitution & Storage**

May be stored at 4°C for short-term only. Aliquot to avoid repeated freezing and thawing. Store at -20°C. Aliquots are stable for at least 12months.

**Precautions**

APOH / Apolipoprotein H Antibody is for research use only and not for use in diagnostic or therapeutic procedures.

**APOH / Apolipoprotein H Antibody - Protein Information****Name** APOH**Synonyms** B2G1**Function**

Binds to various kinds of negatively charged substances such as heparin, phospholipids, and dextran sulfate. May prevent activation of the intrinsic blood coagulation cascade by binding to phospholipids on the surface of damaged cells.

**Cellular Location**

Secreted.

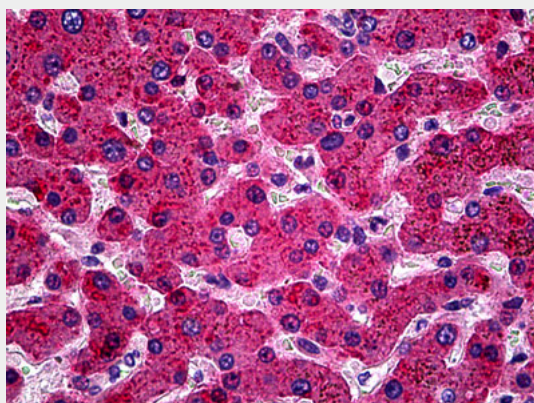
**Tissue Location**

Expressed by the liver and secreted in plasma.

**APOH / Apolipoprotein H Antibody - Protocols**

Provided below are standard protocols that you may find useful for product applications.

- [Western Blot](#)
- [Blocking Peptides](#)
- [Dot Blot](#)
- [Immunohistochemistry](#)
- [Immunofluorescence](#)
- [Immunoprecipitation](#)
- [Flow Cytometry](#)
- [Cell Culture](#)

**APOH / Apolipoprotein H Antibody - Images**

Anti-APOH / Apolipoprotein H antibody IHC of human liver.

**APOH / Apolipoprotein H Antibody - Background**

Binds to various kinds of negatively charged substances such as heparin, phospholipids, and dextran sulfate. May prevent activation of the intrinsic blood coagulation cascade by binding to phospholipids on the surface of damaged cells.

**APOH / Apolipoprotein H Antibody - References**

Steinkasserer A., et al. *Biochem. J.* 277:387-391(1991).  
Kristensen T., et al. *FEBS Lett.* 289:183-186(1991).  
Mehdi H., et al. *Gene* 108:293-298(1991).  
Day J.R., et al. *Int. J. Clin. Lab. Res.* 21:256-263(1992).  
Matsuura E., et al. *Int. Immunol.* 3:1217-1221(1991).