

PSAP / Prosaposin Antibody (clone 1D1-C12)
Mouse Monoclonal Antibody
Catalog # ALS14143**Specification**

PSAP / Prosaposin Antibody (clone 1D1-C12) - Product Information

Application	WB, IHC
Primary Accession	P07602
Reactivity	Human
Host	Mouse
Clonality	Monoclonal
Calculated MW	58kDa kDa

PSAP / Prosaposin Antibody (clone 1D1-C12) - Additional Information**Gene ID** 5660**Other Names**

Prosaposin, Proactivator polypeptide, Saposin-A, Protein A, Saposin-B-Val, Saposin-B, Cerebroside sulfate activator, CSAct, Dispersin, Sphingolipid activator protein 1, SAP-1, Sulfatide/GM1 activator, Saposin-C, A1 activator, Co-beta-glucosidase, Glucosylceramidase activator, Sphingolipid activator protein 2, SAP-2, Saposin-D, Component C, Protein C, PSAP, GLBA, SAP1

Target/Specificity

Human PSAP

Reconstitution & Storage

Short term 4°C, long term aliquot and store at -20°C, avoid freeze thaw cycles.

Precautions

PSAP / Prosaposin Antibody (clone 1D1-C12) is for research use only and not for use in diagnostic or therapeutic procedures.

PSAP / Prosaposin Antibody (clone 1D1-C12) - Protein Information**Name** PSAP**Synonyms** GLBA, SAP1**Function**

Saposin-A and saposin-C stimulate the hydrolysis of glucosylceramide by beta-glucosylceramidase (EC 3.2.1.45) and galactosylceramide by beta-galactosylceramidase (EC 3.2.1.46). Saposin- C apparently acts by combining with the enzyme and acidic lipid to form an activated complex, rather than by solubilizing the substrate. Saposin-D is a specific sphingomyelin phosphodiesterase activator (EC 3.1.4.12). Saposins are specific low-molecular mass non-enzymic proteins, they participate in the lysosomal degradation of sphingolipids, which takes place by the sequential action of specific hydrolases.

Cellular Location

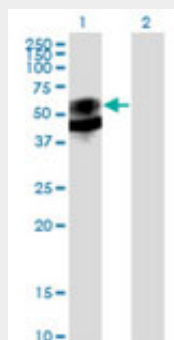
Lysosome

PSAP / Prosaposin Antibody (clone 1D1-C12) - Protocols

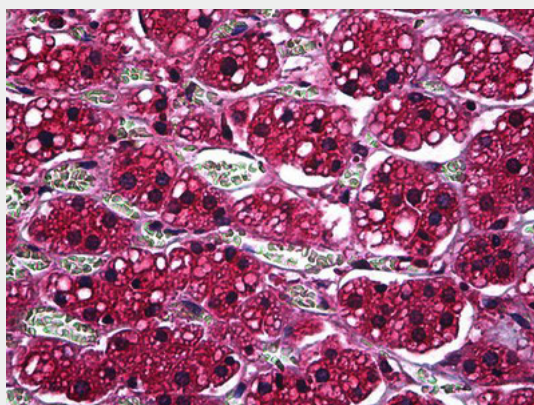
Provided below are standard protocols that you may find useful for product applications.

- [Western Blot](#)
- [Blocking Peptides](#)
- [Dot Blot](#)
- [Immunohistochemistry](#)
- [Immunofluorescence](#)
- [Immunoprecipitation](#)
- [Flow Cytometry](#)
- [Cell Culture](#)

PSAP / Prosaposin Antibody (clone 1D1-C12) - Images



Western blot of PSAP expression in transfected 293T cell line by PSAP monoclonal antibody clone...



Anti-PSAP antibody IHC of human adrenal.

PSAP / Prosaposin Antibody (clone 1D1-C12) - Background

Saposin-A and saposin-C stimulate the hydrolysis of glucosylceramide by beta-glucosylceramidase (EC 3.2.1.45) and galactosylceramide by beta-galactosylceramidase (EC 3.2.1.46). Saposin-C apparently acts by combining with the enzyme and acidic lipid to form an activated complex, rather than by solubilizing the substrate. Saposin-D is a specific sphingomyelin phosphodiesterase activator (EC 3.1.4.12). Saposins are specific low-molecular mass non-enzymic proteins, they

participate in the lysosomal degradation of sphingolipids, which takes place by the sequential action of specific hydrolases.

PSAP / Prosaposin Antibody (clone 1D1-C12) - References

Rorman E.G.,et al.Genomics 5:486-492(1989).

Nakano T.,et al.J. Biochem. 105:152-154(1989).

Kalnina N.,et al.Submitted (MAY-2003) to the EMBL/GenBank/DDBJ databases.

Ebert L.,et al.Submitted (JUN-2004) to the EMBL/GenBank/DDBJ databases.

Deloukas P.,et al.Nature 429:375-381(2004).