

RALB Antibody (clone 4D1)
Mouse Monoclonal Antibody
Catalog # ALS14144**Specification**

RALB Antibody (clone 4D1) - Product Information

Application	WB, IHC
Primary Accession	P11234
Reactivity	Human
Host	Mouse
Clonality	Monoclonal
Calculated MW	23kDa KDa

RALB Antibody (clone 4D1) - Additional Information**Gene ID** 5899**Other Names**

Ras-related protein Ral-B, RALB

Target/Specificity

Human RALB

Reconstitution & Storage

Short term 4°C, long term aliquot and store at -20°C, avoid freeze thaw cycles.

Precautions

RALB Antibody (clone 4D1) is for research use only and not for use in diagnostic or therapeutic procedures.

RALB Antibody (clone 4D1) - Protein Information**Name** RALB**Function**

Multifunctional GTPase involved in a variety of cellular processes including gene expression, cell migration, cell proliferation, oncogenic transformation and membrane trafficking (PubMed:10393179, PubMed:17875936, PubMed:18756269).

Accomplishes its multiple functions by interacting with distinct downstream effectors. Acts as a GTP sensor for GTP-dependent exocytosis of dense core vesicles (By similarity). Required both to stabilize the assembly of the exocyst complex and to localize functional exocyst complexes to the leading edge of migrating cells (By similarity). Required for suppression of apoptosis (PubMed:17875936). In late stages of cytokinesis, upon completion of the bridge formation between dividing cells, mediates exocyst recruitment to the midbody to drive abscission (PubMed:18756269). Involved in

ligand-dependent receptor mediated endocytosis of the EGF and insulin receptors (PubMed:10393179).

Cellular Location

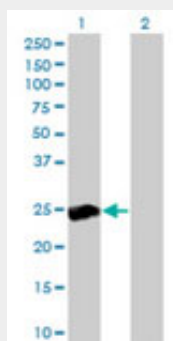
Cell membrane; Lipid-anchor; Cytoplasmic side. Midbody Note=During late cytokinesis, enriched at the midbody

RALB Antibody (clone 4D1) - Protocols

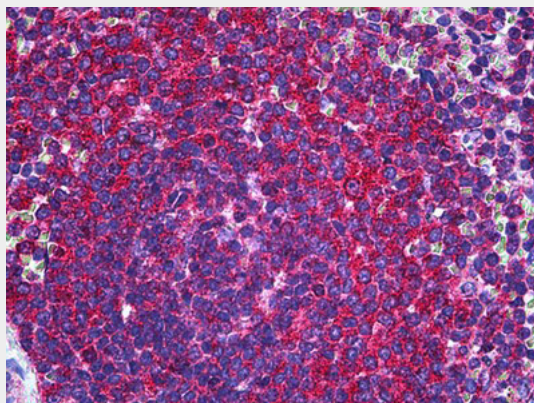
Provided below are standard protocols that you may find useful for product applications.

- [Western Blot](#)
- [Blocking Peptides](#)
- [Dot Blot](#)
- [Immunohistochemistry](#)
- [Immunofluorescence](#)
- [Immunoprecipitation](#)
- [Flow Cytometry](#)
- [Cell Culture](#)

RALB Antibody (clone 4D1) - Images



Western blot of RALB expression in transfected 293T cell line by RALB monoclonal antibody clone 4D1.



Anti-RALB antibody IHC of human spleen.

RALB Antibody (clone 4D1) - Background

Multifunctional GTPase involved in a variety of cellular processes including gene expression, cell migration, cell proliferation, oncogenic transformation and membrane trafficking. Accomplishes its

multiple functions by interacting with distinct downstream effectors. Acts as a GTP sensor for GTP-dependent exocytosis of dense core vesicles. Required both to stabilize the assembly of the exocyst complex and to localize functional exocyst complexes to the leading edge of migrating cells. Plays a role in the late stages of cytokinesis and is required for the abscission of the bridge joining the sister cells emerging from mitosis. Required for suppression of apoptosis.

RALB Antibody (clone 4D1) - References

Chardin P.,et al.Nucleic Acids Res. 17:4380-4380(1989).
Hsieh C.-L.,et al.Somat. Cell Mol. Genet. 16:407-410(1990).
Puhl H.L. III,et al.Submitted (MAR-2002) to the EMBL/GenBank/DDBJ databases.
Kalnine N.,et al.Submitted (MAY-2003) to the EMBL/GenBank/DDBJ databases.
Ota T.,et al.Nat. Genet. 36:40-45(2004).