

Melanoma Antigen NKI/C3 Antibody (clone NKI/C3)
Mouse Monoclonal Antibody
Catalog # ALS14178**Specification**

Melanoma Antigen NKI/C3 Antibody (clone NKI/C3) - Product Information

Application	IHC-P
Reactivity	Human
Host	Mouse
Clonality	Monoclonal
Dilution	IHC-P~~N/A

Melanoma Antigen NKI/C3 Antibody (clone NKI/C3) - Additional Information**Target/Specificity**

This antibody recognizes a heterogeneous 25-110 kD glycoprotein that is located mainly in the inner side of membranes of cytoplasmic vesicles in melanoma cells. The antigen has a 25 kD unglycosylated precursor in formalin fixed and paraffin-embedded ...

Reconstitution & Storage

Short term 4°C, long term aliquot and store at -20°C, avoid freeze thaw cycles.

Precautions

Melanoma Antigen NKI/C3 Antibody (clone NKI/C3) is for research use only and not for use in diagnostic or therapeutic procedures.

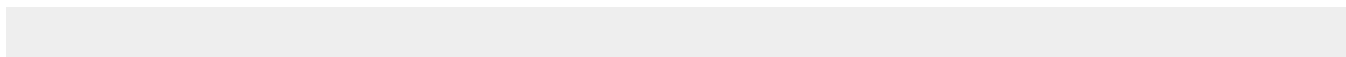
Melanoma Antigen NKI/C3 Antibody (clone NKI/C3) - Protein Information**Volume**

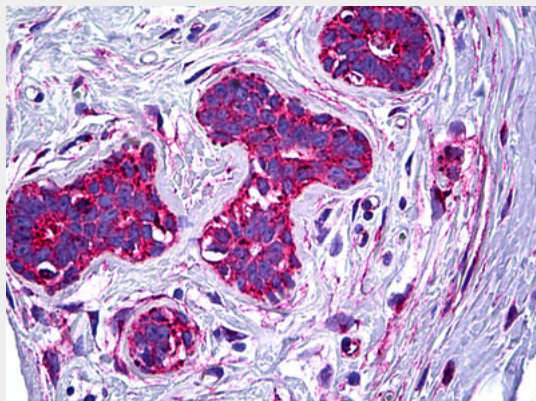
50 µl

Melanoma Antigen NKI/C3 Antibody (clone NKI/C3) - Protocols

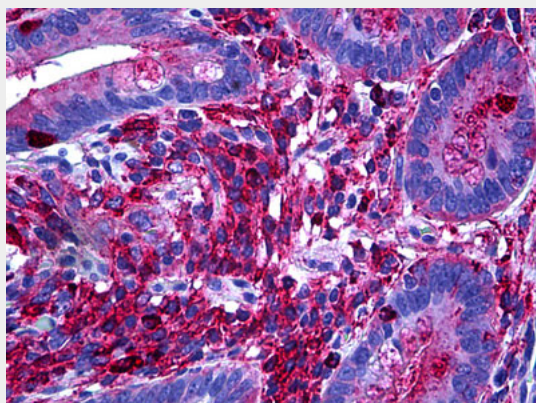
Provided below are standard protocols that you may find useful for product applications.

- [Western Blot](#)
- [Blocking Peptides](#)
- [Dot Blot](#)
- [Immunohistochemistry](#)
- [Immunofluorescence](#)
- [Immunoprecipitation](#)
- [Flow Cytometry](#)
- [Cell Culture](#)

Melanoma Antigen NKI/C3 Antibody (clone NKI/C3) - Images



Anti-NKI/C3 antibody IHC of human breast.



Anti-NKI/C3 antibody IHC of human intestine.