

**ESA / EPCAM Antibody (clone MOC-31)**  
**Mouse Monoclonal Antibody**  
**Catalog # ALS14179****Specification**

---

**ESA / EPCAM Antibody (clone MOC-31) - Product Information**

Application	WB, IHC-P, IHC-F
Primary Accession	<a href="#">P16422</a>
Reactivity	Human
Host	Mouse
Clonality	Monoclonal
Calculated MW	35kDa KDa
Dilution	WB~~1:1000 IHC-P~~N/A IHC-F~~N/A

**ESA / EPCAM Antibody (clone MOC-31) - Additional Information****Gene ID** 4072**Other Names**

Epithelial cell adhesion molecule, Ep-CAM, Adenocarcinoma-associated antigen, Cell surface glycoprotein Trop-1, Epithelial cell surface antigen, Epithelial glycoprotein, EGP, Epithelial glycoprotein 314, EGP314, hEGP314, KS 1/4 antigen, KSA, Major gastrointestinal tumor-associated protein GA733-2, Tumor-associated calcium signal transducer 1, CD326, EPCAM, GA733-2, M1S2, M4S1, MIC18, TACSTD1, TROP1

**Target/Specificity**

This antibody is reactive with lung cancer associated antigens and has been studied and categorized in different clusters of reactivity patterns during the First International Workshop on Small Cell Lung Cancer Antigens held in London in April 1987. ...

**Reconstitution & Storage**

+4°C. Store undiluted.

**Precautions**

ESA / EPCAM Antibody (clone MOC-31) is for research use only and not for use in diagnostic or therapeutic procedures.

**ESA / EPCAM Antibody (clone MOC-31) - Protein Information****Name** EPCAM**Synonyms** GA733-2, M1S2, M4S1, MIC18, TACSTD1, TRO**Function**

May act as a physical homophilic interaction molecule between intestinal epithelial cells (IECs) and intraepithelial lymphocytes (IELs) at the mucosal epithelium for providing immunological barrier as

a first line of defense against mucosal infection. Plays a role in embryonic stem cells proliferation and differentiation. Up-regulates the expression of FABP5, MYC and cyclins A and E.

**Cellular Location**

Lateral cell membrane; Single-pass type I membrane protein. Cell junction, tight junction.

Note=Colocalizes with CLDN7 at the lateral cell membrane and tight junction

**Tissue Location**

Highly and selectively expressed by undifferentiated rather than differentiated embryonic stem cells (ESC) Levels rapidly diminish as soon as ESC's differentiate (at protein levels). Expressed in almost all epithelial cell membranes but not on mesodermal or neural cell membranes. Found on the surface of adenocarcinoma.

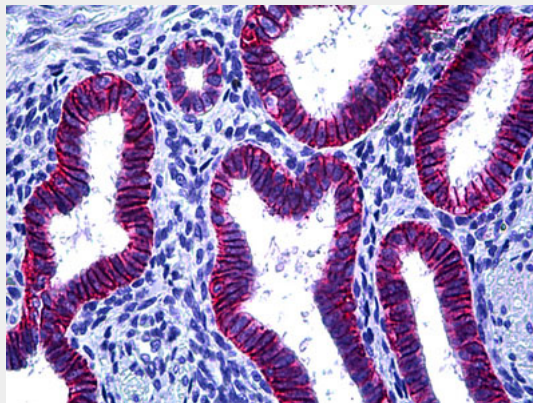
**Volume**

50 µl

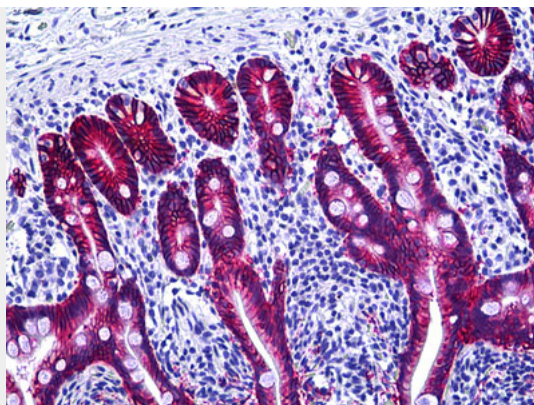
**ESA / EPCAM Antibody (clone MOC-31) - Protocols**

Provided below are standard protocols that you may find useful for product applications.

- [Western Blot](#)
- [Blocking Peptides](#)
- [Dot Blot](#)
- [Immunohistochemistry](#)
- [Immunofluorescence](#)
- [Immunoprecipitation](#)
- [Flow Cytometry](#)
- [Cell Culture](#)

**ESA / EPCAM Antibody (clone MOC-31) - Images**

Anti-EPCAM antibody IHC of human uterus, endometrium.



Anti-EPCAM antibody IHC of human intestine.

#### **ESA / EPCAM Antibody (clone MOC-31) - Background**

May act as a physical homophilic interaction molecule between intestinal epithelial cells (IECs) and intraepithelial lymphocytes (IELs) at the mucosal epithelium for providing immunological barrier as a first line of defense against mucosal infection. Plays a role in embryonic stem cells proliferation and differentiation. Up-regulates the expression of FABP5, MYC and cyclins A and E.

#### **ESA / EPCAM Antibody (clone MOC-31) - References**

- Strnad J., et al. Cancer Res. 49:314-317(1989).
- Perez M.S., et al. J. Immunol. 142:3662-3667(1989).
- Simon B., et al. Proc. Natl. Acad. Sci. U.S.A. 87:2755-2759(1990).
- Szala S., et al. Proc. Natl. Acad. Sci. U.S.A. 87:3542-3546(1990).
- Linnenbach A.J., et al. Mol. Cell. Biol. 13:1507-1515(1993).