

**STAT1 Antibody (aa694-743)**  
**Rabbit Polyclonal Antibody**  
**Catalog # ALS14193****Specification**

---

**STAT1 Antibody (aa694-743) - Product Information**

Application	WB
Primary Accession	<a href="#">P42224</a>
Reactivity	Human, Mouse, Rat
Host	Rabbit
Clonality	Polyclonal
Calculated MW	87kDa KDa

**STAT1 Antibody (aa694-743) - Additional Information****Gene ID** 6772**Other Names**

Signal transducer and activator of transcription 1-alpha/beta, Transcription factor ISGF-3 components p91/p84, STAT1

**Target/Specificity**

STAT1 Antibody detects endogenous levels of total STAT1 protein.

**Reconstitution & Storage**

Short term 4°C, long term aliquot and store at -20°C, avoid freeze thaw cycles.

**Precautions**

STAT1 Antibody (aa694-743) is for research use only and not for use in diagnostic or therapeutic procedures.

**STAT1 Antibody (aa694-743) - Protein Information****Name** STAT1**Function**

Signal transducer and transcription activator that mediates cellular responses to interferons (IFNs), cytokine KITLG/SCF and other cytokines and other growth factors (PubMed:<a href="http://www.uniprot.org/citations/12764129" target="\_blank">12764129</a>, PubMed:<a href="http://www.uniprot.org/citations/12855578" target="\_blank">12855578</a>, PubMed:<a href="http://www.uniprot.org/citations/15322115" target="\_blank">15322115</a>, PubMed:<a href="http://www.uniprot.org/citations/23940278" target="\_blank">23940278</a>, PubMed:<a href="http://www.uniprot.org/citations/34508746" target="\_blank">34508746</a>, PubMed:<a href="http://www.uniprot.org/citations/35568036" target="\_blank">35568036</a>, PubMed:<a href="http://www.uniprot.org/citations/9724754" target="\_blank">9724754</a>). Following type I IFN (IFN-alpha and IFN-beta) binding to cell surface receptors, signaling via protein kinases leads to activation of Jak kinases (TYK2 and JAK1) and to tyrosine phosphorylation of STAT1 and STAT2. The phosphorylated STATs dimerize and associate with ISGF3G/IRF-9 to form a complex termed

ISGF3 transcription factor, that enters the nucleus (PubMed:<a href="http://www.uniprot.org/citations/28753426" target="\_blank">28753426</a>, PubMed:<a href="http://www.uniprot.org/citations/35568036" target="\_blank">35568036</a>). ISGF3 binds to the IFN stimulated response element (ISRE) to activate the transcription of IFN-stimulated genes (ISG), which drive the cell in an antiviral state (PubMed:<a href="http://www.uniprot.org/citations/28753426" target="\_blank">28753426</a>, PubMed:<a href="http://www.uniprot.org/citations/35568036" target="\_blank">35568036</a>). In response to type II IFN (IFN-gamma), STAT1 is tyrosine- and serine-phosphorylated (PubMed:<a href="http://www.uniprot.org/citations/26479788" target="\_blank">26479788</a>). It then forms a homodimer termed IFN-gamma-activated factor (GAF), migrates into the nucleus and binds to the IFN gamma activated sequence (GAS) to drive the expression of the target genes, inducing a cellular antiviral state (PubMed:<a href="http://www.uniprot.org/citations/8156998" target="\_blank">8156998</a>). Becomes activated in response to KITLG/SCF and KIT signaling (PubMed:<a href="http://www.uniprot.org/citations/15526160" target="\_blank">15526160</a>). May mediate cellular responses to activated FGFR1, FGFR2, FGFR3 and FGFR4 (PubMed:<a href="http://www.uniprot.org/citations/19088846" target="\_blank">19088846</a>). Following bacterial lipopolysaccharide (LPS)-induced TLR4 endocytosis, phosphorylated at Thr-749 by IKBKB which promotes binding of STAT1 to the 5'-TTTGAGGC-3' sequence in the ARID5A promoter, resulting in transcriptional activation of ARID5A and subsequent ARID5A-mediated stabilization of IL6 (PubMed:<a href="http://www.uniprot.org/citations/32209697" target="\_blank">32209697</a>). Phosphorylation at Thr-749 also promotes binding of STAT1 to the 5'-TTTGAGTC-3' sequence in the IL12B promoter and activation of IL12B transcription (PubMed:<a href="http://www.uniprot.org/citations/32209697" target="\_blank">32209697</a>). Involved in food tolerance: associates with the Gasdermin-D, p13 cleavage product (13 kDa GSDMD) and promotes transcription of CIITA, inducing type 1 regulatory T (Tr1) cells in upper small intestine (By similarity).

#### Cellular Location

Cytoplasm. Nucleus Note=Translocated into the nucleus upon tyrosine phosphorylation and dimerization, in response to IFN-gamma and signaling by activated FGFR1, FGFR2, FGFR3 or FGFR4 (PubMed:15322115). Monomethylation at Lys- 525 is required for phosphorylation at Tyr-701 and translocation into the nucleus (PubMed:28753426). Translocates into the nucleus in response to interferon-beta stimulation (PubMed:26479788)

#### Volume

50 µl

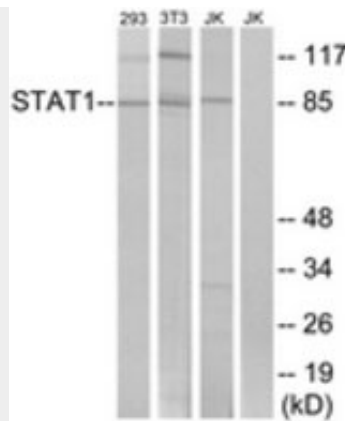
#### STAT1 Antibody (aa694-743) - Protocols

Provided below are standard protocols that you may find useful for product applications.

- [Western Blot](#)
- [Blocking Peptides](#)
- [Dot Blot](#)
- [Immunohistochemistry](#)
- [Immunofluorescence](#)
- [Immunoprecipitation](#)
- [Flow Cytometry](#)
- [Cell Culture](#)

#### STAT1 Antibody (aa694-743) - Images





Western blot of extracts from 293/3T3/Jurkat, using STAT1 Antibody.

### **STAT1 Antibody (aa694-743) - Background**

Signal transducer and transcription activator that mediates cellular responses to interferons (IFNs), cytokine KITLG/SCF and other cytokines and other growth factors. Following type I IFN (IFN-alpha and IFN-beta) binding to cell surface receptors, signaling via protein kinases leads to activation of Jak kinases (TYK2 and JAK1) and to tyrosine phosphorylation of STAT1 and STAT2. The phosphorylated STATs dimerize and associate with ISGF3G/IRF-9 to form a complex termed ISGF3 transcription factor, that enters the nucleus. ISGF3 binds to the IFN stimulated response element (ISRE) to activate the transcription of IFN- stimulated genes (ISG), which drive the cell in an antiviral state. In response to type II IFN (IFN-gamma), STAT1 is tyrosine- and serine-phosphorylated. It then forms a homodimer termed IFN- gamma-activated factor (GAF), migrates into the nucleus and binds to the IFN gamma activated sequence (GAS) to drive the expression of the target genes, inducing a cellular antiviral state. Becomes activated in response to KITLG/SCF and KIT signaling. May mediate cellular responses to activated FGFR1, FGFR2, FGFR3 and FGFR4.

### **STAT1 Antibody (aa694-743) - References**

Schindler C., et al. Proc. Natl. Acad. Sci. U.S.A. 89:7836-7839(1992).  
Kristensen I., et al. Submitted (NOV-2009) to the EMBL/GenBank/DDBJ databases.  
Ota T., et al. Nat. Genet. 36:40-45(2004).  
Bechtel S., et al. BMC Genomics 8:399-399(2007).  
Kalline N., et al. Submitted (MAY-2003) to the EMBL/GenBank/DDBJ databases.