

**SERPING1 / C1 Inhibitor Antibody (clone 3F4-1D9)**  
**Mouse Monoclonal Antibody**  
**Catalog # ALS14314****Specification**

---

**SERPING1 / C1 Inhibitor Antibody (clone 3F4-1D9) - Product Information**

Application	WB, IP, IHC
Primary Accession	<a href="#">P05155</a>
Reactivity	Human
Host	Mouse
Clonality	Monoclonal
Calculated MW	55kDa KDa

**SERPING1 / C1 Inhibitor Antibody (clone 3F4-1D9) - Additional Information****Gene ID** 710**Other Names**

Plasma protease C1 inhibitor, C1 Inh, C1Inh, C1 esterase inhibitor, C1-inhibiting factor, Serpin G1, SERPING1, C1IN, C1NH

**Target/Specificity**

Human SERPING1

**Reconstitution & Storage**

Aliquot and store at -20°C or -80°C. Avoid freeze-thaw cycles.

**Precautions**

SERPING1 / C1 Inhibitor Antibody (clone 3F4-1D9) is for research use only and not for use in diagnostic or therapeutic procedures.

**SERPING1 / C1 Inhibitor Antibody (clone 3F4-1D9) - Protein Information****Name** SERPING1**Synonyms** C1IN, C1NH**Function**

Activation of the C1 complex is under control of the C1- inhibitor. It forms a proteolytically inactive stoichiometric complex with the C1r or C1s proteases. May play a potentially crucial role in regulating important physiological pathways including complement activation, blood coagulation, fibrinolysis and the generation of kinins. Very efficient inhibitor of FXIIa. Inhibits chymotrypsin and kallikrein.

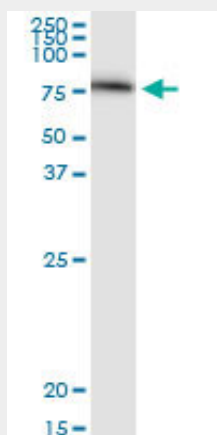
**Cellular Location**

Secreted.

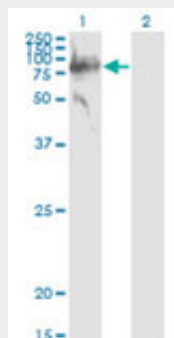
**SERPING1 / C1 Inhibitor Antibody (clone 3F4-1D9) - Protocols**

Provided below are standard protocols that you may find useful for product applications.

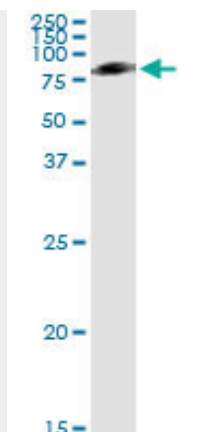
- [Western Blot](#)
- [Blocking Peptides](#)
- [Dot Blot](#)
- [Immunohistochemistry](#)
- [Immunofluorescence](#)
- [Immunoprecipitation](#)
- [Flow Cytometry](#)
- [Cell Culture](#)

**SERPING1 / C1 Inhibitor Antibody (clone 3F4-1D9) - Images**

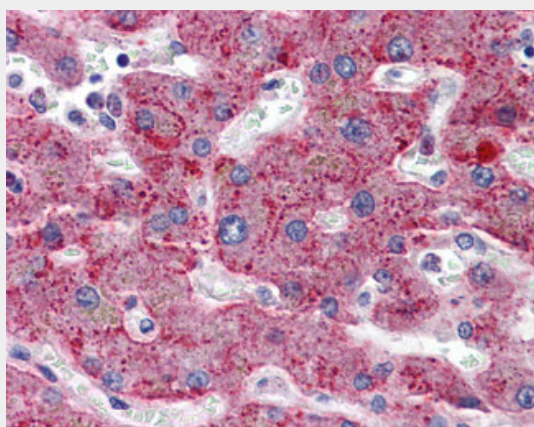
Western blot of SERPING1 expression in human liver.



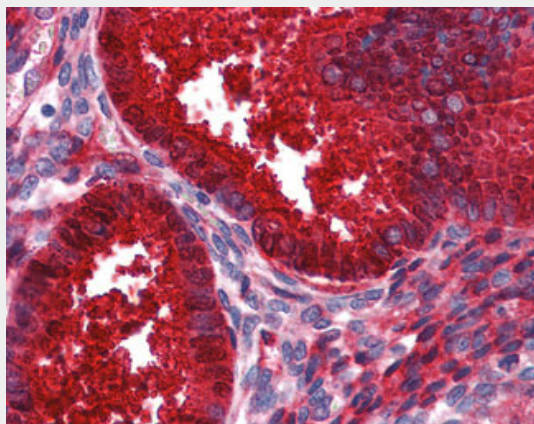
Western blot of SERPING1 expression in transfected 293T cell line.



Immunoprecipitation of SERPING1 transfected lysate using anti-SERPING1 monoclonal antibody and...



Anti-SERPING1 / C1INH antibody IHC of human liver.



Anti-SERPING1 / C1INH antibody IHC of human uterus.

#### **SERPING1 / C1 Inhibitor Antibody (clone 3F4-1D9) - Background**

Activation of the C1 complex is under control of the C1- inhibitor. It forms a proteolytically inactive stoichiometric complex with the C1r or C1s proteases. May play a potentially crucial role in regulating important physiological pathways including complement activation, blood coagulation, fibrinolysis and the generation of kinins. Very efficient inhibitor of FXIIa. Inhibits chymotrypsin and kallikrein.

#### **SERPING1 / C1 Inhibitor Antibody (clone 3F4-1D9) - References**

Que B.G.,et al.Biochem. Biophys. Res. Commun. 137:620-625(1986).  
Bock S.C.,et al.Biochemistry 25:4292-4301(1986).  
Carter P.E.,et al.Eur. J. Biochem. 173:163-169(1988).  
Carter P.E.,et al.Eur. J. Biochem. 197:301-308(1991).  
Heus J.,et al.Submitted (OCT-2001) to the EMBL/GenBank/DDBJ databases.