

**CCNH / Cyclin H Antibody (clone 1B8)**  
**Mouse Monoclonal Antibody**  
**Catalog # ALS14322****Specification**

---

**CCNH / Cyclin H Antibody (clone 1B8) - Product Information**

Application	WB, IF, IHC
Primary Accession	<a href="#">P51946</a>
Reactivity	Human
Host	Mouse
Clonality	Monoclonal
Calculated MW	38kDa KDa

**CCNH / Cyclin H Antibody (clone 1B8) - Additional Information****Gene ID** 902**Other Names**

Cyclin-H, MO15-associated protein, p34, p37, CCNH

**Target/Specificity**

Human Cyclin H

**Reconstitution & Storage**

Aliquot and store at -20°C or -80°C. Avoid freeze-thaw cycles.

**Precautions**

CCNH / Cyclin H Antibody (clone 1B8) is for research use only and not for use in diagnostic or therapeutic procedures.

**CCNH / Cyclin H Antibody (clone 1B8) - Protein Information****Name** CCNH**Function**

Regulates CDK7, the catalytic subunit of the CDK-activating kinase (CAK) enzymatic complex. CAK activates the cyclin-associated kinases CDK1, CDK2, CDK4 and CDK6 by threonine phosphorylation. CAK complexed to the core-TFIH basal transcription factor activates RNA polymerase II by serine phosphorylation of the repetitive C-terminal domain (CTD) of its large subunit (POLR2A), allowing its escape from the promoter and elongation of the transcripts. Involved in cell cycle control and in RNA transcription by RNA polymerase II. Its expression and activity are constant throughout the cell cycle.

**Cellular Location**

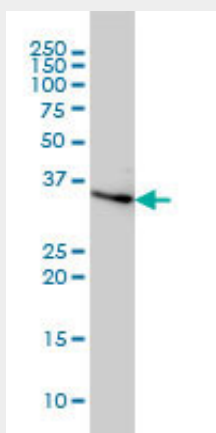
Nucleus.

## CCNH / Cyclin H Antibody (clone 1B8) - Protocols

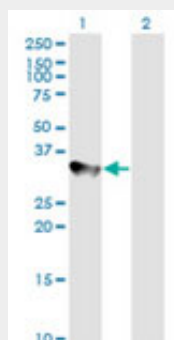
Provided below are standard protocols that you may find useful for product applications.

- [Western Blot](#)
- [Blocking Peptides](#)
- [Dot Blot](#)
- [Immunohistochemistry](#)
- [Immunofluorescence](#)
- [Immunoprecipitation](#)

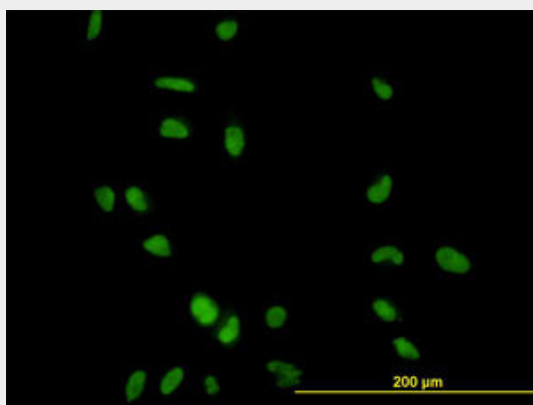
## CCNH / Cyclin H Antibody (clone 1B8) - Images



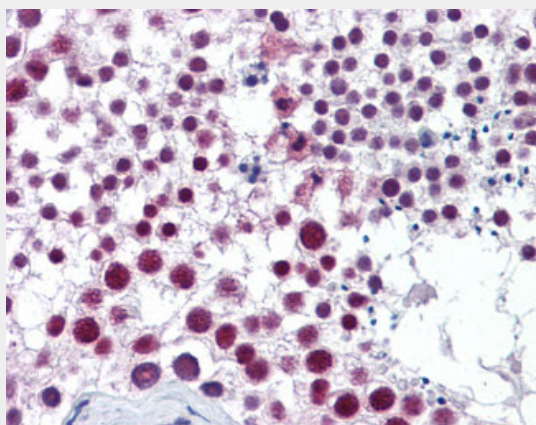
Western blot of CCNH expression in HeLa cell lysate.



Western blot of CCNH expression in transfected 293T cell line.



Immunofluorescence of monoclonal antibody to CCNH on HeLa cell. [antibody concentration 10 ug/ml]



Anti-CCNH / Cyclin H antibody IHC of human testis.

### **CCNH / Cyclin H Antibody (clone 1B8) - Background**

Regulates CDK7, the catalytic subunit of the CDK- activating kinase (CAK) enzymatic complex. CAK activates the cyclin-associated kinases CDK1, CDK2, CDK4 and CDK6 by threonine phosphorylation. CAK complexed to the core-TFIIF basal transcription factor activates RNA polymerase II by serine phosphorylation of the repetitive C-terminal domain (CTD) of its large subunit (POLR2A), allowing its escape from the promoter and elongation of the transcripts. Involved in cell cycle control and in RNA transcription by RNA polymerase II. Its expression and activity are constant throughout the cell cycle.

### **CCNH / Cyclin H Antibody (clone 1B8) - References**

Maekelae T.P.,et al.Nature 371:254-257(1994).  
Fisher R.P.,et al.Cell 78:713-724(1994).  
Ebert L.,et al.Submitted (MAY-2004) to the EMBL/GenBank/DDBJ databases.  
Shiekhattar R.,et al.Nature 374:283-287(1995).  
Kershnar E.,et al.J. Biol. Chem. 273:34444-34453(1998).