

PPM1A / PP2CA Antibody (clone 4E11)
Mouse Monoclonal Antibody
Catalog # ALS14354**Specification**

PPM1A / PP2CA Antibody (clone 4E11) - Product Information

Application	IHC
Primary Accession	P35813
Reactivity	Human
Host	Mouse
Clonality	Monoclonal
Calculated MW	42kDa KDa

PPM1A / PP2CA Antibody (clone 4E11) - Additional Information**Gene ID** 5494**Other Names**

Protein phosphatase 1A, 3.1.3.16, Protein phosphatase 2C isoform alpha, PP2C-alpha, Protein phosphatase 1A, PPM1A, PPPM1A

Target/Specificity

Human PPM1A

Reconstitution & Storage

Short term 4°C, long term aliquot and store at -20°C, avoid freeze thaw cycles.

Precautions

PPM1A / PP2CA Antibody (clone 4E11) is for research use only and not for use in diagnostic or therapeutic procedures.

PPM1A / PP2CA Antibody (clone 4E11) - Protein Information**Name** PPM1A**Synonyms** PPPM1A**Function**

Enzyme with a broad specificity. Negatively regulates TGF- beta signaling through dephosphorylating SMAD2 and SMAD3, resulting in their dissociation from SMAD4, nuclear export of the SMADs and termination of the TGF-beta-mediated signaling. Dephosphorylates PRKAA1 and PRKAA2. Plays an important role in the termination of TNF-alpha- mediated NF-kappa-B activation through dephosphorylating and inactivating IKBKB/IKKB.

Cellular Location

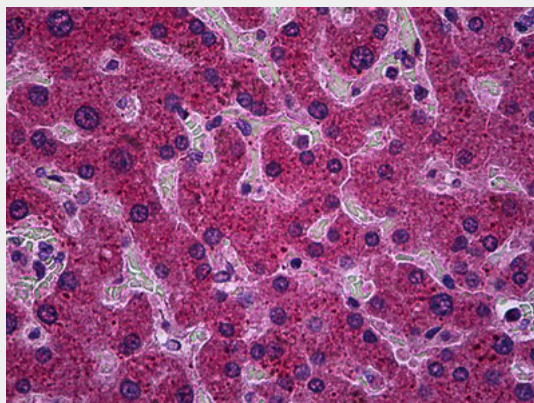
Nucleus. Cytoplasm, cytosol. Membrane; Lipid- anchor Note=Weakly associates at the membrane and N-myristoylation mediates the membrane localization. {ECO:0000250|UniProtKB:P49443}

PPM1A / PP2CA Antibody (clone 4E11) - Protocols

Provided below are standard protocols that you may find useful for product applications.

- [Western Blot](#)
- [Blocking Peptides](#)
- [Dot Blot](#)
- [Immunohistochemistry](#)
- [Immunofluorescence](#)
- [Immunoprecipitation](#)
- [Flow Cytometry](#)
- [Cell Culture](#)

PPM1A / PP2CA Antibody (clone 4E11) - Images



Anti-PPM1A antibody IHC of human liver.

PPM1A / PP2CA Antibody (clone 4E11) - Background

Enzyme with a broad specificity. Negatively regulates TGF-beta signaling through dephosphorylating SMAD2 and SMAD3, resulting in their dissociation from SMAD4, nuclear export of the SMADs and termination of the TGF-beta-mediated signaling. Dephosphorylates PRKAA1 and PRKAA2. Plays an important role in the termination of TNF-alpha-mediated NF-kappa-B activation through dephosphorylating and inactivating IKBKB/IKKB.

PPM1A / PP2CA Antibody (clone 4E11) - References

Mann D.J., et al. Biochim. Biophys. Acta 1130:100-104(1992).
Takekawa M., et al. EMBO J. 17:4744-4752(1998).
Ota T., et al. Nat. Genet. 36:40-45(2004).
Goshima N., et al. Nat. Methods 5:1011-1017(2008).
Heilig R., et al. Nature 421:601-607(2003).