

EWSR1 / EWS Antibody (clone 5C10)
Mouse Monoclonal Antibody
Catalog # ALS14369**Specification**

EWSR1 / EWS Antibody (clone 5C10) - Product Information

Application	WB
Primary Accession	Q01844
Reactivity	Human
Host	Mouse
Clonality	Monoclonal
Calculated MW	68kDa KDa

EWSR1 / EWS Antibody (clone 5C10) - Additional Information**Gene ID** 2130**Other Names**

RNA-binding protein EWS, EWS oncogene, Ewing sarcoma breakpoint region 1 protein, EWSR1, EWS

Target/Specificity

Human EWSR1

Reconstitution & Storage

Aliquot and store at -20°C or -80°C. Avoid freeze-thaw cycles.

Precautions

EWSR1 / EWS Antibody (clone 5C10) is for research use only and not for use in diagnostic or therapeutic procedures.

EWSR1 / EWS Antibody (clone 5C10) - Protein Information**Name** EWSR1**Synonyms** EWS**Function**

Might normally function as a transcriptional repressor. EWS- fusion-proteins (EFPS) may play a role in the tumorigenic process. They may disturb gene expression by mimicking, or interfering with the normal function of CTD-POLII within the transcription initiation complex. They may also contribute to an aberrant activation of the fusion protein target genes.

Cellular Location

Nucleus. Cytoplasm. Cell membrane. Note=Relocates from cytoplasm to ribosomes upon PTK2B/FAK2 activation

Tissue Location

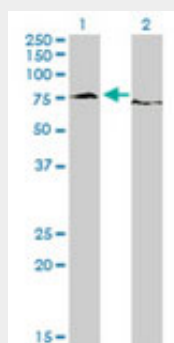
Ubiquitous.

EWSR1 / EWS Antibody (clone 5C10) - Protocols

Provided below are standard protocols that you may find useful for product applications.

- [Western Blot](#)
- [Blocking Peptides](#)
- [Dot Blot](#)
- [Immunohistochemistry](#)
- [Immunofluorescence](#)
- [Immunoprecipitation](#)
- [Flow Cytometry](#)
- [Cell Culture](#)

EWSR1 / EWS Antibody (clone 5C10) - Images



Western blot of EWSR1 expression in transfected 293T cell line by EWSR1 antibody.

EWSR1 / EWS Antibody (clone 5C10) - Background

Might normally function as a transcriptional repressor. EWS-fusion-proteins (EFPS) may play a role in the tumorigenic process. They may disturb gene expression by mimicking, or interfering with the normal function of CTD-POLII within the transcription initiation complex. They may also contribute to an aberrant activation of the fusion protein target genes.

EWSR1 / EWS Antibody (clone 5C10) - References

Delattre O., et al. Nature 359:162-165(1992).
Plougastel B., et al. Genomics 18:609-615(1993).
Zucman-Rossi J., et al. Submitted (MAY-1998) to the EMBL/GenBank/DDBJ databases.
Collins J.E., et al. Genome Biol. 5:R84.1-R84.11(2004).
Ota T., et al. Nat. Genet. 36:40-45(2004).