

EP / DBI Antibody (clone 20B10)
Mouse Monoclonal Antibody
Catalog # ALS14441**Specification**

EP / DBI Antibody (clone 20B10) - Product Information

| | |
|-------------------|------------------------|
| Application | IP, IHC |
| Primary Accession | P07108 |
| Reactivity | Human |
| Host | Mouse |
| Clonality | Monoclonal |
| Calculated MW | 10kDa KDa |

EP / DBI Antibody (clone 20B10) - Additional Information**Gene ID** 1622**Other Names**

Acyl-CoA-binding protein, ACBP, Diazepam-binding inhibitor, DBI, Endozepine, EP, DBI

Reconstitution & Storage

Long term: -20°C; Short term: +4°C; Avoid freeze-thaw cycles.

Precautions

EP / DBI Antibody (clone 20B10) is for research use only and not for use in diagnostic or therapeutic procedures.

EP / DBI Antibody (clone 20B10) - Protein Information**Name** DBI**Function**

Binds medium- and long-chain acyl-CoA esters with very high affinity and may function as an intracellular carrier of acyl-CoA esters. It is also able to displace diazepam from the benzodiazepine (BZD) recognition site located on the GABA type A receptor. It is therefore possible that this protein also acts as a neuropeptide to modulate the action of the GABA receptor.

Cellular Location

Endoplasmic reticulum. Golgi apparatus Note=Golgi localization is dependent on ligand binding (PubMed:17953517).

Tissue Location

Isoform 1 is ubiquitous, with a moderate expression level. Isoform 2 is ubiquitous with high level in liver and adipose tissue. Isoform 3 is ubiquitous with strong expression in adipose tissue and heart.

Volume

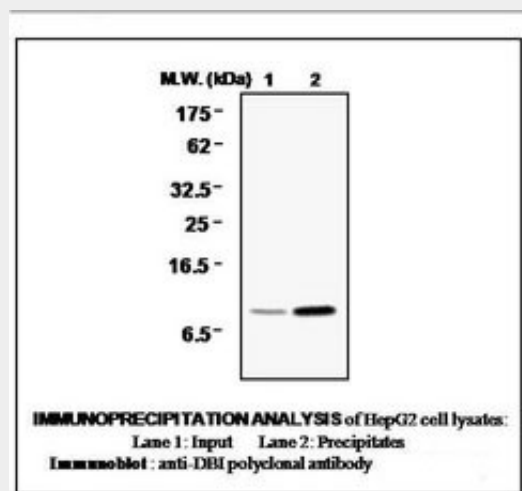
50 µl

EP / DBI Antibody (clone 20B10) - Protocols

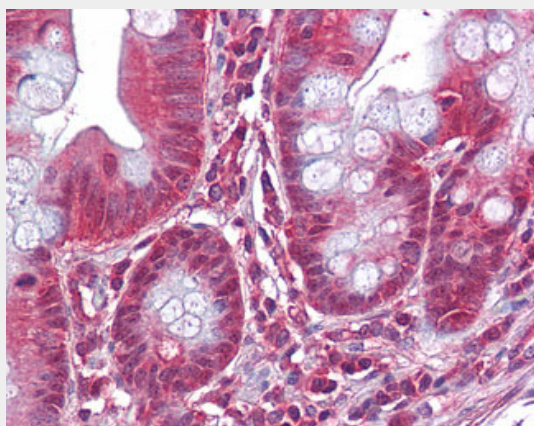
Provided below are standard protocols that you may find useful for product applications.

- [Western Blot](#)
- [Blocking Peptides](#)
- [Dot Blot](#)
- [Immunohistochemistry](#)
- [Immunofluorescence](#)
- [Immunoprecipitation](#)
- [Flow Cytometry](#)
- [Cell Culture](#)

EP / DBI Antibody (clone 20B10) - Images



0



Anti-DBI antibody IHC of human small intestine.

EP / DBI Antibody (clone 20B10) - Background

Binds medium- and long-chain acyl-CoA esters with very high affinity and may function as an intracellular carrier of acyl-CoA esters. It is also able to displace diazepam from the benzodiazepine (BZD) recognition site located on the GABA type A receptor. It is therefore possible that this protein also acts as a neuropeptide to modulate the action of the GABA receptor.

EP / DBI Antibody (clone 20B10) - References

Gray P.W.,et al.Proc. Natl. Acad. Sci. U.S.A. 83:7547-7551(1986).
Webb N.R.,et al.DNA 6:71-79(1987).
Nitz I.,et al.Int. J. Biochem. Cell Biol. 37:2395-2405(2005).
Ludewig A.H.,et al.IUBMB Life 63:547-552(2011).
Nitz I.,et al.J. Cell. Mol. Med. 15:909-927(2011).