

KRT18 / CK18 / Cytokeratin 18 Antibody (clone AT2G3)
Mouse Monoclonal Antibody
Catalog # ALS14450**Specification**

KRT18 / CK18 / Cytokeratin 18 Antibody (clone AT2G3) - Product Information

Application	WB, IF, IHC
Primary Accession	P05783
Reactivity	Human
Host	Mouse
Clonality	Monoclonal
Calculated MW	48kDa KDa

KRT18 / CK18 / Cytokeratin 18 Antibody (clone AT2G3) - Additional Information**Gene ID** 3875**Other Names**

Keratin, type I cytoskeletal 18, Cell proliferation-inducing gene 46 protein, Cytokeratin-18, CK-18, Keratin-18, K18, KRT18, CYK18

Target/Specificity

Human KRT18 / Cytokeratin 18

Reconstitution & Storage

Can be stored at 4°C. For long term storage, aliquot and store at -20°C. Avoid repeated freezing and thawing cycles.

Precautions

KRT18 / CK18 / Cytokeratin 18 Antibody (clone AT2G3) is for research use only and not for use in diagnostic or therapeutic procedures.

KRT18 / CK18 / Cytokeratin 18 Antibody (clone AT2G3) - Protein Information**Name** KRT18**Synonyms** CYK18**Function**

Involved in the uptake of thrombin-antithrombin complexes by hepatic cells (By similarity). When phosphorylated, plays a role in filament reorganization. Involved in the delivery of mutated CFTR to the plasma membrane. Together with KRT8, is involved in interleukin-6 (IL-6)-mediated barrier protection.

Cellular Location

Nucleus matrix {ECO:0000250|UniProtKB:Q5BJY9}. Cytoplasm, perinuclear region. Nucleus, nucleolus. Cytoplasm {ECO:0000250|UniProtKB:Q5BJY9}

Tissue Location

Expressed in colon, placenta, liver and very weakly in exocervix. Increased expression observed in lymph nodes of breast carcinoma.

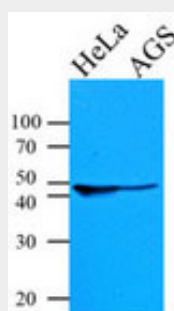
Volume

50 μ l

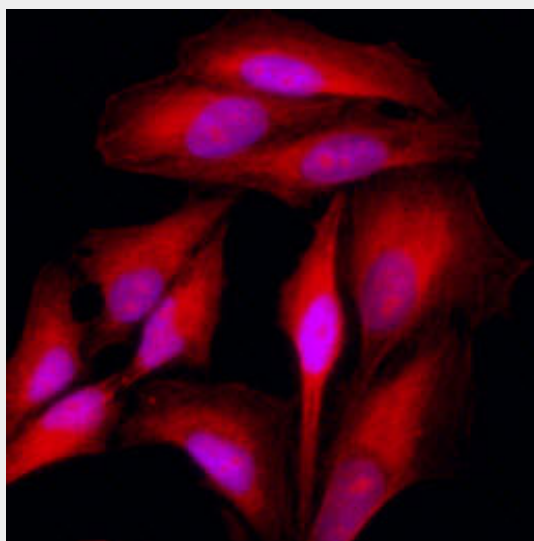
KRT18 / CK18 / Cytokeratin 18 Antibody (clone AT2G3) - Protocols

Provided below are standard protocols that you may find useful for product applications.

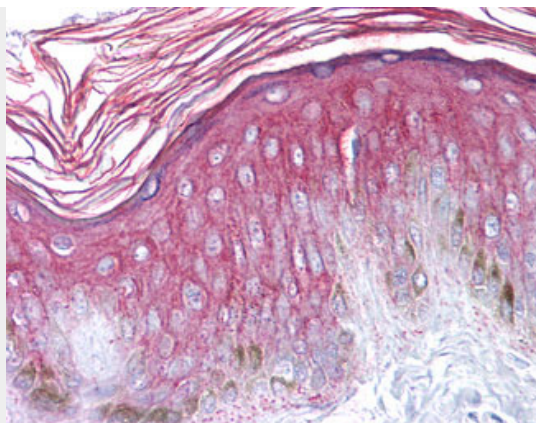
- [Western Blot](#)
- [Blocking Peptides](#)
- [Dot Blot](#)
- [Immunohistochemistry](#)
- [Immunofluorescence](#)
- [Immunoprecipitation](#)
- [Flow Cytometry](#)
- [Cell Culture](#)

KRT18 / CK18 / Cytokeratin 18 Antibody (clone AT2G3) - Images

Cell lysates of HeLa and AGS (35 ug) were resolved by SDS-PAGE, transferred to PVDF membrane and...



Immunofluorescence of HeLa cells stained with Hoechst 3342 (Blue) for nucleus staining and...



Anti-KRT18 / Cytokeratin 18 antibody IHC of human skin.

KRT18 / CK18 / Cytokeratin 18 Antibody (clone AT2G3) - Background

Involved in the uptake of thrombin-antithrombin complexes by hepatic cells (By similarity). When phosphorylated, plays a role in filament reorganization. Involved in the delivery of mutated CFTR to the plasma membrane. Together with KRT8, is involved in interleukin-6 (IL-6)-mediated barrier protection.

KRT18 / CK18 / Cytokeratin 18 Antibody (clone AT2G3) - References

- Oshima R.G.,et al.Differentiation 33:61-68(1986).
Kim J.W.,et al.Submitted (SEP-2004) to the EMBL/GenBank/DDBJ databases.
Kalnine N.,et al.Submitted (OCT-2004) to the EMBL/GenBank/DDBJ databases.
Suzuki Y.,et al.Submitted (APR-2005) to the EMBL/GenBank/DDBJ databases.
Kulesh D.A.,et al.Mol. Cell. Biol. 8:1540-1550(1988).