

TUBB / Beta Tubulin Antibody (clone AT5B2)
Mouse Monoclonal Antibody
Catalog # ALS14451**Specification**

TUBB / Beta Tubulin Antibody (clone AT5B2) - Product Information

Application	WB, IHC-P, IF, E
Primary Accession	P07437
Reactivity	Human, Mouse
Host	Mouse
Clonality	Monoclonal
Calculated MW	50kDa KDa
Dilution	WB~~1:1000 IHC-P~~N/A IF~~1:50~200 E~~N/A

TUBB / Beta Tubulin Antibody (clone AT5B2) - Additional Information**Gene ID** 203068**Other Names**

Tubulin beta chain, Tubulin beta-5 chain, TUBB, TUBB5

Target/Specificity

Human TUBB / Tubulin, Beta

Reconstitution & Storage

Can be stored at 4°C. For long term storage, aliquot and store at -20°C. Avoid repeated freezing and thawing cycles.

Precautions

TUBB / Beta Tubulin Antibody (clone AT5B2) is for research use only and not for use in diagnostic or therapeutic procedures.

TUBB / Beta Tubulin Antibody (clone AT5B2) - Protein Information**Name** TUBB**Synonyms** TUBB5**Function**

Tubulin is the major constituent of microtubules, a cylinder consisting of laterally associated linear protofilaments composed of alpha- and beta-tubulin heterodimers. Microtubules grow by the addition of GTP-tubulin dimers to the microtubule end, where a stabilizing cap forms. Below the cap, tubulin dimers are in GDP-bound state, owing to GTPase activity of alpha-tubulin.

Cellular Location

Cytoplasm, cytoskeleton

Tissue Location

Ubiquitously expressed with highest levels in spleen, thymus and immature brain.

Volume

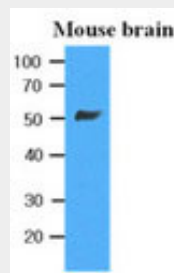
50 μ l

TUBB / Beta Tubulin Antibody (clone AT5B2) - Protocols

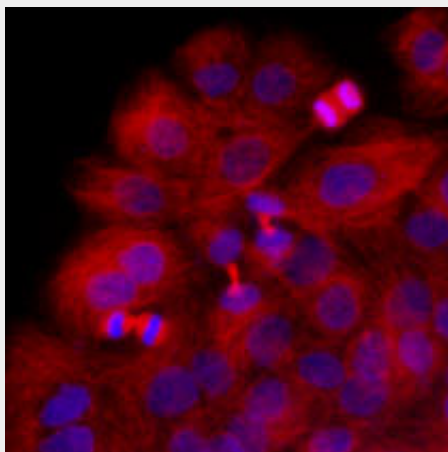
Provided below are standard protocols that you may find useful for product applications.

- [Western Blot](#)
- [Blocking Peptides](#)
- [Dot Blot](#)
- [Immunohistochemistry](#)
- [Immunofluorescence](#)
- [Immunoprecipitation](#)
- [Flow Cytometry](#)
- [Cell Culture](#)

TUBB / Beta Tubulin Antibody (clone AT5B2) - Images



Extracts of Mouse brain (35 μ g) were resolved by SDS-PAGE, transferred to PVDF membrane and...



Immunofluorescence of HaCaT cells stained with Hoechst 3342 (Blue) for nucleus staining and...

TUBB / Beta Tubulin Antibody (clone AT5B2) - Background

Tubulin is the major constituent of microtubules. It binds two moles of GTP, one at an

exchangeable site on the beta chain and one at a non-exchangeable site on the alpha chain.

TUBB / Beta Tubulin Antibody (clone AT5B2) - References

Lee M.G.-S., et al. Cell 33:477-487(1983).

Hall J.L., et al. Mol. Cell. Biol. 3:854-862(1983).

Crabtree D.V., et al. Bioorg. Med. Chem. 9:1967-1976(2001).

Yu W., et al. Submitted (JUN-1998) to the EMBL/GenBank/DDBJ databases.

Shiina S., et al. Submitted (SEP-1999) to the EMBL/GenBank/DDBJ databases.