

RET Antibody (aa896-1063, clone 8D10C9)
Mouse Monoclonal Antibody
Catalog # ALS14478**Specification**

RET Antibody (aa896-1063, clone 8D10C9) - Product Information

Application	WB, IHC
Primary Accession	P07949
Reactivity	Human
Host	Mouse
Clonality	Monoclonal
Calculated MW	124kDa KDa

RET Antibody (aa896-1063, clone 8D10C9) - Additional Information**Gene ID** 5979**Other Names**

Proto-oncogene tyrosine-protein kinase receptor Ret, 2.7.10.1, Cadherin family member 12, Proto-oncogene c-Ret, Soluble RET kinase fragment, Extracellular cell-membrane anchored RET cadherin 120 kDa fragment, RET, CDHF12, CDHR16, PTC, RET51

Reconstitution & Storage

Long term: -20°C; Short term: +4°C; Avoid freeze-thaw cycles.

Precautions

RET Antibody (aa896-1063, clone 8D10C9) is for research use only and not for use in diagnostic or therapeutic procedures.

RET Antibody (aa896-1063, clone 8D10C9) - Protein Information**Name** RET ([HGNC:9967](#))**Synonyms** CDHF12, CDHR16, PTC, RET51**Function**

Receptor tyrosine-protein kinase involved in numerous cellular mechanisms including cell proliferation, neuronal navigation, cell migration, and cell differentiation upon binding with glial cell derived neurotrophic factor family ligands. Phosphorylates PTK2/FAK1. Regulates both cell death/survival balance and positional information. Required for the molecular mechanisms orchestration during intestine organogenesis; involved in the development of enteric nervous system and renal organogenesis during embryonic life, and promotes the formation of Peyer's patch-like structures, a major component of the gut-associated lymphoid tissue. Modulates cell adhesion via its cleavage by caspase in sympathetic neurons and mediates cell migration in an integrin (e.g. ITGB1 and ITGB3)-dependent manner. Involved in the development of the neural crest. Active in the absence of ligand, triggering apoptosis through a mechanism that requires receptor intracellular caspase cleavage. Acts as a dependence receptor; in the presence of the ligand GDNF in somatotrophs (within pituitary), promotes survival and down regulates growth

hormone (GH) production, but triggers apoptosis in absence of GDNF. Regulates nociceptor survival and size. Triggers the differentiation of rapidly adapting (RA) mechanoreceptors. Mediator of several diseases such as neuroendocrine cancers; these diseases are characterized by aberrant integrins-regulated cell migration. Mediates, through interaction with GDF15-receptor GFRAL, GDF15-induced cell-signaling in the brainstem which induces inhibition of food-intake. Activates MAPK- and AKT- signaling pathways (PubMed:28846097, PubMed:28953886, PubMed:28846099). Isoform 1 in complex with GFRAL induces higher activation of MAPK- signaling pathway than isoform 2 in complex with GFRAL (PubMed:28846099).

Cellular Location

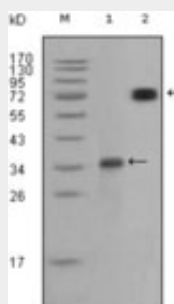
Cell membrane; Single-pass type I membrane protein. Endosome membrane; Single-pass type I membrane protein Note=Predominantly located on the plasma membrane. In the presence of SORL1 and GFRA1, directed to endosomes.

RET Antibody (aa896-1063, clone 8D10C9) - Protocols

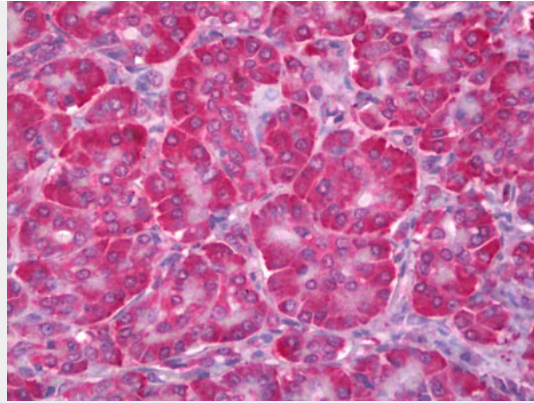
Provided below are standard protocols that you may find useful for product applications.

- [Western Blot](#)
- [Blocking Peptides](#)
- [Dot Blot](#)
- [Immunohistochemistry](#)
- [Immunofluorescence](#)
- [Immunoprecipitation](#)
- [Flow Cytometry](#)
- [Cell Culture](#)

RET Antibody (aa896-1063, clone 8D10C9) - Images



Western blot analysis using RET monoclonal antibody against truncated RET-GST recombinant...



Anti-RET antibody IHC of human pancreas.

RET Antibody (aa896-1063, clone 8D10C9) - Background

Receptor tyrosine-protein kinase involved in numerous cellular mechanisms including cell proliferation, neuronal navigation, cell migration, and cell differentiation upon binding with glial cell derived neurotrophic factor family ligands. Phosphorylates PTK2/FAK1. Regulates both cell death/survival balance and positional information. Required for the molecular mechanisms orchestration during intestine organogenesis; involved in the development of enteric nervous system and renal organogenesis during embryonic life, and promotes the formation of Peyer's patch-like structures, a major component of the gut- associated lymphoid tissue. Modulates cell adhesion via its cleavage by caspase in sympathetic neurons and mediates cell migration in an integrin (e.g. ITGB1 and ITGB3)-dependent manner. Involved in the development of the neural crest. Active in the absence of ligand, triggering apoptosis through a mechanism that requires receptor intracellular caspase cleavage. Acts as a dependence receptor; in the presence of the ligand GDNF in somatotrophs (within pituitary), promotes survival and down regulates growth hormone (GH) production, but triggers apoptosis in absence of GDNF. Regulates nociceptor survival and size. Triggers the differentiation of rapidly adapting (RA) mechanoreceptors. Mediator of several diseases such as neuroendocrine cancers; these diseases are characterized by aberrant integrins-regulated cell migration.

RET Antibody (aa896-1063, clone 8D10C9) - References

Ota T.,et al.Nat. Genet. 36:40-45(2004).
Deloukas P.,et al.Nature 429:375-381(2004).
Takahashi M.,et al.Oncogene 4:805-806(1989).
Takahashi M.,et al.Oncogene 3:571-578(1988).
Takahashi M.,et al.Mol. Cell. Biol. 7:1378-1385(1987).