

**UBE1L2 / UBE1L2 Antibody (clone 1D11)**  
**Mouse Monoclonal Antibody**  
**Catalog # ALS14491****Specification**

---

**UBE1L2 / UBE1L2 Antibody (clone 1D11) - Product Information**

Application	IHC
Primary Accession	<a href="#">A0AVT1</a>
Reactivity	Human
Host	Mouse
Clonality	Monoclonal
Calculated MW	118kDa KDa

**UBE1L2 / UBE1L2 Antibody (clone 1D11) - Additional Information****Gene ID** 55236**Other Names**

Ubiquitin-like modifier-activating enzyme 6, Ubiquitin-activating enzyme 6, Monocyte protein 4, MOP-4, Ubiquitin-activating enzyme E1-like protein 2, E1-L2, UBA6, MOP4, UBE1L2

**Target/Specificity**

Human UBA6

**Reconstitution & Storage**

Short term 4°C, long term aliquot and store at -20°C, avoid freeze thaw cycles.

**Precautions**

UBE1L2 / UBE1L2 Antibody (clone 1D11) is for research use only and not for use in diagnostic or therapeutic procedures.

**UBE1L2 / UBE1L2 Antibody (clone 1D11) - Protein Information****Name** UBA6**Synonyms** MOP4, UBE1L2**Function**

Activates ubiquitin by first adenylating its C-terminal glycine residue with ATP, and thereafter linking this residue to the side chain of a cysteine residue in E1, yielding a ubiquitin-E1 thioester and free AMP. Specific for ubiquitin, does not activate ubiquitin-like peptides. Differs from UBE1 in its specificity for substrate E2 charging. Does not charge cell cycle E2s, such as CDC34. Essential for embryonic development. Required for UBD/FAT10 conjugation. Isoform 2 may play a key role in ubiquitin system and may influence spermatogenesis and male fertility.

**Tissue Location**

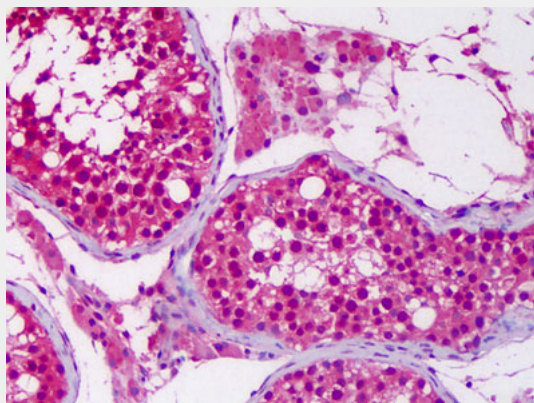
Widely expressed. Isoform 2 is predominantly expressed in testis with higher expression in adult testis than in fetal testis.

## **UBE1L2 / UBE1L2 Antibody (clone 1D11) - Protocols**

Provided below are standard protocols that you may find useful for product applications.

- [Western Blot](#)
- [Blocking Peptides](#)
- [Dot Blot](#)
- [Immunohistochemistry](#)
- [Immunofluorescence](#)
- [Immunoprecipitation](#)
- [Flow Cytometry](#)
- [Cell Culture](#)

## **UBE1L2 / UBE1L2 Antibody (clone 1D11) - Images**



Anti-UBA6 antibody IHC of human testis.

## **UBE1L2 / UBE1L2 Antibody (clone 1D11) - Background**

Activates ubiquitin by first adenylating its C-terminal glycine residue with ATP, and thereafter linking this residue to the side chain of a cysteine residue in E1, yielding a ubiquitin- E1 thioester and free AMP. Specific for ubiquitin, does not activate ubiquitin-like peptides. Differs from UBE1 in its specificity for substrate E2 charging. Does not charge cell cycle E2s, such as CDC34. Essential for embryonic development. Required for UBD/FAT10 conjugation. Isoform 2 may play a key role in ubiquitin system and may influence spermatogenesis and male fertility.

## **UBE1L2 / UBE1L2 Antibody (clone 1D11) - References**

Zhu H.,et al.Acta Biochim. Biophys. Sin. 36:227-234(2004).  
Jin J.,et al.Nature 447:1135-1138(2007).  
Takayama K.,et al.Submitted (MAY-1998) to the EMBL/GenBank/DDBJ databases.  
Ota T.,et al.Nat. Genet. 36:40-45(2004).  
Bechtel S.,et al.BMC Genomics 8:399-399(2007).