

CAMK1D Antibody (clone 3H8)
Mouse Monoclonal Antibody
Catalog # ALS14492**Specification**

CAMK1D Antibody (clone 3H8) - Product Information

Application	WB, IHC
Primary Accession	Q8IU85
Reactivity	Human
Host	Mouse
Clonality	Monoclonal
Calculated MW	43kDa KDa

CAMK1D Antibody (clone 3H8) - Additional Information**Gene ID** 57118**Other Names**

Calcium/calmodulin-dependent protein kinase type 1D, 2.7.11.17, CaM kinase I delta, CaM kinase ID, CaM-KI delta, CaMKI delta, CaMKID, CaMKI-like protein kinase, CKLiK, CAMK1D, CAMKID

Target/Specificity

Human CAMK1D

Reconstitution & Storage

Short term 4°C, long term aliquot and store at -20°C, avoid freeze thaw cycles.

Precautions

CAMK1D Antibody (clone 3H8) is for research use only and not for use in diagnostic or therapeutic procedures.

CAMK1D Antibody (clone 3H8) - Protein Information**Name** CAMK1D**Synonyms** CAMKID**Function**

Calcium/calmodulin-dependent protein kinase that operates in the calcium-triggered CaMKK-CaMK1 signaling cascade and, upon calcium influx, activates CREB-dependent gene transcription, regulates calcium-mediated granulocyte function and respiratory burst and promotes basal dendritic growth of hippocampal neurons. In neutrophil cells, required for cytokine-induced proliferative responses and activation of the respiratory burst. Activates the transcription factor CREB1 in hippocampal neuron nuclei. May play a role in apoptosis of erythroleukemia cells. In vitro, phosphorylates transcription factor CREM isoform Beta.

Cellular Location

Cytoplasm. Nucleus. Note=Predominantly cytoplasmic. Nuclear localization increases upon

activation by KCl treatment in hippocampal neurons

Tissue Location

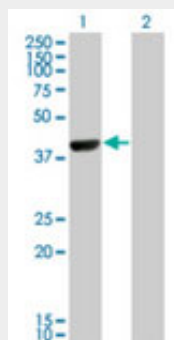
Widely expressed. Highly and mostly expressed in polymorphonuclear leukocytes (neutrophilic and eosinophilic granulocytes) while little or no expression is observed in monocytes and lymphocytes.

CAMK1D Antibody (clone 3H8) - Protocols

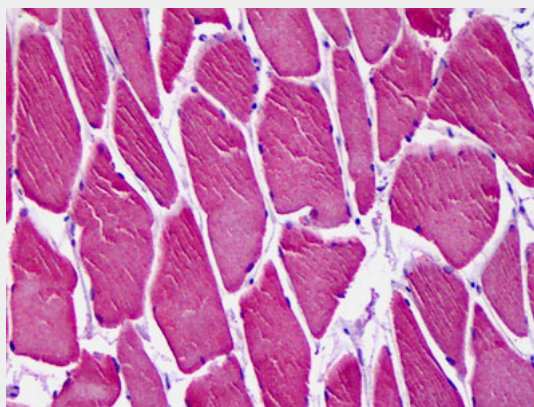
Provided below are standard protocols that you may find useful for product applications.

- [Western Blot](#)
- [Blocking Peptides](#)
- [Dot Blot](#)
- [Immunohistochemistry](#)
- [Immunofluorescence](#)
- [Immunoprecipitation](#)
- [Flow Cytometry](#)
- [Cell Culture](#)

CAMK1D Antibody (clone 3H8) - Images



Western blot of CAMK1D expression in transfected 293T cell line by antibody ALS14492.



Anti-CAMK1D antibody IHC of human skeletal muscle.

CAMK1D Antibody (clone 3H8) - Background

Calcium/calmodulin-dependent protein kinase that operates in the calcium-triggered CaMKK-CaMK1 signaling cascade and, upon calcium influx, activates CREB-dependent gene transcription, regulates calcium-mediated granulocyte function and respiratory burst and promotes basal dendritic growth of hippocampal neurons. In neutrophil cells, required for cytokine-induced

proliferative responses and activation of the respiratory burst. Activates the transcription factor CREB1 in hippocampal neuron nuclei. May play a role in apoptosis of erythroleukemia cells. In vitro, phosphorylates transcription factor CREM isoform Beta.

CAMK1D Antibody (clone 3H8) - References

Verploegen S.,et al.Blood 96:3215-3223(2000).

Ishikawa Y.,et al.FEBS Lett. 550:57-63(2003).

Deloukas P.,et al.Nature 429:375-381(2004).

Mural R.J.,et al.Submitted (SEP-2005) to the EMBL/GenBank/DDBJ databases.

Verploegen S.,et al.Blood 106:1076-1083(2005).