

HES1 / HES-1 Antibody (N-Terminus)
Rabbit Polyclonal Antibody
Catalog # ALS14498**Specification**

HES1 / HES-1 Antibody (N-Terminus) - Product Information

Application	WB, IHC
Primary Accession	Q14469
Reactivity	Human, Mouse, Rat
Host	Rabbit
Clonality	Polyclonal
Calculated MW	30kDa KDa

HES1 / HES-1 Antibody (N-Terminus) - Additional Information**Gene ID** 3280**Other Names**

Transcription factor HES-1, Class B basic helix-loop-helix protein 39, bHLHb39, Hairy and enhancer of split 1, Hairy homolog, Hairy-like protein, hHL, HES1, BHLHB39, HL, HRY

Reconstitution & Storage

Short term 4°C, long term aliquot and store at -20°C, avoid freeze thaw cycles.

Precautions

HES1 / HES-1 Antibody (N-Terminus) is for research use only and not for use in diagnostic or therapeutic procedures.

HES1 / HES-1 Antibody (N-Terminus) - Protein Information**Name** HES1**Synonyms** BHLHB39, HL, HRY**Function**

Transcriptional repressor of genes that require a bHLH protein for their transcription. May act as a negative regulator of myogenesis by inhibiting the functions of MYOD1 and ASH1. Binds DNA on N-box motifs: 5'-CACNAG-3' with high affinity and on E-box motifs: 5'-CANNTG-3' with low affinity (By similarity). May play a role in a functional FA core complex response to DNA cross-link damage, being required for the stability and nuclear localization of FA core complex proteins, as well as for FANCD2 monoubiquitination in response to DNA damage.

Cellular Location

Nucleus.

Volume

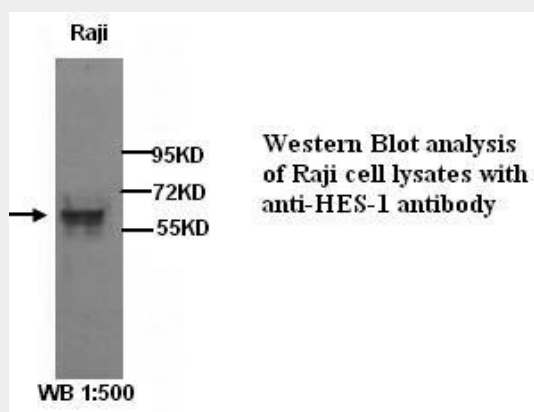
50 µl

HES1 / HES-1 Antibody (N-Terminus) - Protocols

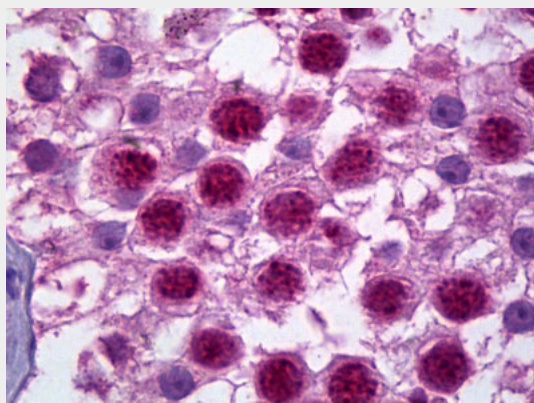
Provided below are standard protocols that you may find useful for product applications.

- [Western Blot](#)
- [Blocking Peptides](#)
- [Dot Blot](#)
- [Immunohistochemistry](#)
- [Immunofluorescence](#)
- [Immunoprecipitation](#)
- [Flow Cytometry](#)
- [Cell Culture](#)

HES1 / HES-1 Antibody (N-Terminus) - Images



0



Anti-HES1 antibody IHC of human testis.

HES1 / HES-1 Antibody (N-Terminus) - Background

Transcriptional repressor of genes that require a bHLH protein for their transcription. May act as a negative regulator of myogenesis by inhibiting the functions of MYOD1 and ASH1. Binds DNA on N-box motifs: 5'-CACNAG-3' with high affinity and on E-box motifs: 5'-CANNTG-3' with low affinity (By similarity). May play a role in a functional FA core complex response to DNA cross-link damage, being required for the stability and nuclear localization of FA core complex proteins, as well as for FANCD2 monoubiquitination in response to DNA damage.

HES1 / HES-1 Antibody (N-Terminus) - References

Feder J.N.,et al.Genomics 20:56-61(1994).
Yao J.,et al.Submitted (MAY-2000) to the EMBL/GenBank/DDBJ databases.
Ota T.,et al.Nat. Genet. 36:40-45(2004).
Ebert L.,et al.Submitted (JUN-2004) to the EMBL/GenBank/DDBJ databases.
Takata T.,et al.Biochem. Biophys. Res. Commun. 301:250-257(2003).