

ABCB5 Antibody
Rabbit Polyclonal Antibody
Catalog # ALS14504**Specification**

ABCB5 Antibody - Product Information

Application	IHC
Primary Accession	Q2M3G0
Reactivity	Human
Host	Rabbit
Clonality	Polyclonal
Calculated MW	139kDa KDa

ABCB5 Antibody - Additional Information**Gene ID** 340273**Other Names**

ATP-binding cassette sub-family B member 5, ABCB5 P-gp, P-glycoprotein ABCB5, ABCB5

Target/Specificity

This Polyclonal antibody is directed against human ABCB5 protein. The product was purified from serum by protein A chromatography. Expect reactivity with human ABCB5. Cross-reactivity with ABCB5 from other sources has not been determined.

Reconstitution & Storage

Short term 4°C, long term aliquot and store at -20°C, avoid freeze thaw cycles.

Precautions

ABCB5 Antibody is for research use only and not for use in diagnostic or therapeutic procedures.

ABCB5 Antibody - Protein Information**Name** ABCB5 ([HGNC:46](#))**Function**

Energy-dependent efflux transporter responsible for decreased drug accumulation in multidrug-resistant cells (PubMed: [12960149](http://www.uniprot.org/citations/12960149), PubMed: [22306008](http://www.uniprot.org/citations/22306008), PubMed: [15899824](http://www.uniprot.org/citations/15899824), PubMed: [15205344](http://www.uniprot.org/citations/15205344)). Specifically present in limbal stem cells, where it plays a key role in corneal development and repair (By similarity).

Cellular Location

Cell membrane; Multi-pass membrane protein {ECO:0000255|PROSITE-ProRule:PRU00441, ECO:0000269|PubMed:12960149}

Tissue Location

Expressed by CD133-expressing progenitor cells among epidermal melanocytes (at protein level). Widely expressed with specific expression in pigment cells. Highly expressed in several malignant tissues: highly expressed in clinical melanomas, with low expression in normal skin. In melanoma, marks malignant melanoma- initiating cells (MMIC), in which clinical virulence resides as a consequence of unlimited self-renewal capacity, resulting in inexorable tumor progression and metastasis. Also highly expressed in a number of leukemia cells. Expressed in basal limbal epithelium

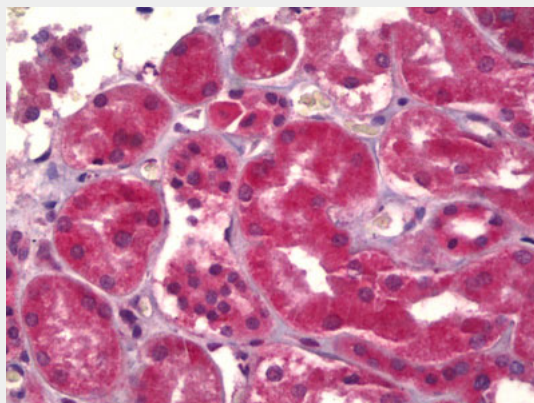
Volume

50 µl

ABCB5 Antibody - Protocols

Provided below are standard protocols that you may find useful for product applications.

- [Western Blot](#)
- [Blocking Peptides](#)
- [Dot Blot](#)
- [Immunohistochemistry](#)
- [Immunofluorescence](#)
- [Immunoprecipitation](#)
- [Flow Cytometry](#)
- [Cell Culture](#)

ABCB5 Antibody - Images

Anti-ABCB5 antibody IHC of human kidney.

ABCB5 Antibody - Background

Drug efflux transporter present in a number of stem cells that acts as a regulator of cellular differentiation. Able to mediate efflux from cells of the rhodamine dye and of the therapeutic drug doxorubicin. Specifically present in limbal stem cells, where it plays a key role in corneal development and repair.

ABCB5 Antibody - References

Frank N.Y., et al. J. Biol. Chem. 278:47156-47165(2003).
Chen K.G., et al. Pigment Cell Res. 18:102-112(2005).
Wilson B.J., et al. Cancer Res. 71:5307-5316(2011).

Kawanobe T., et al. Biochem. Biophys. Res. Commun. 418:736-741(2012).
Meij I.C., et al. Submitted (FEB-2003) to the EMBL/GenBank/DDBJ databases.