

ATP6V1B2 Antibody (clone 2A5)
Mouse Monoclonal Antibody
Catalog # ALS14513**Specification**

ATP6V1B2 Antibody (clone 2A5) - Product Information

Application	WB, IHC
Primary Accession	P21281
Reactivity	Human
Host	Mouse
Clonality	Monoclonal
Calculated MW	57kDa KDa

ATP6V1B2 Antibody (clone 2A5) - Additional Information**Gene ID** 526**Other Names**

V-type proton ATPase subunit B, brain isoform, V-ATPase subunit B 2, Endomembrane proton pump 58 kDa subunit, HO57, Vacuolar proton pump subunit B 2, ATP6V1B2, ATP6B2, VPP3

Target/Specificity

Human ATP6V1B2

Reconstitution & Storage

Short term 4°C, long term aliquot and store at -20°C, avoid freeze thaw cycles.

Precautions

ATP6V1B2 Antibody (clone 2A5) is for research use only and not for use in diagnostic or therapeutic procedures.

ATP6V1B2 Antibody (clone 2A5) - Protein Information**Name** ATP6V1B2**Synonyms** ATP6B2, VPP3**Function**

Non-catalytic subunit of the V1 complex of vacuolar(H⁺)- ATPase (V-ATPase), a multisubunit enzyme composed of a peripheral complex (V1) that hydrolyzes ATP and a membrane integral complex (V0) that translocates protons (PubMed:33065002). V-ATPase is responsible for acidifying and maintaining the pH of intracellular compartments and in some cell types, is targeted to the plasma membrane, where it is responsible for acidifying the extracellular environment (PubMed:32001091). In renal intercalated cells, can partially compensate the lack of ATP6V1B1 and mediate secretion of protons (H⁺) into the urine under base-line conditions but not in conditions of acid load (By similarity).

Cellular Location

Apical cell membrane. Melanosome. Cytoplasm {ECO:0000250|UniProtKB:P62814}. Cytoplasmic vesicle, secretory vesicle, synaptic vesicle, clathrin-coated vesicle membrane {ECO:0000250|UniProtKB:P62815}; Peripheral membrane protein. Cytoplasmic vesicle, clathrin-coated vesicle membrane {ECO:0000250|UniProtKB:P62815}; Peripheral membrane protein. Note=Identified by mass spectrometry in melanosome fractions from stage I to stage IV

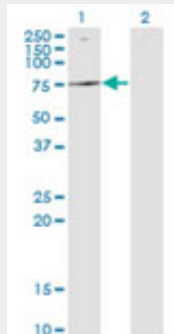
Tissue Location

Kidney; localizes to early distal nephron, encompassing thick ascending limbs and distal convoluted tubules (at protein level).

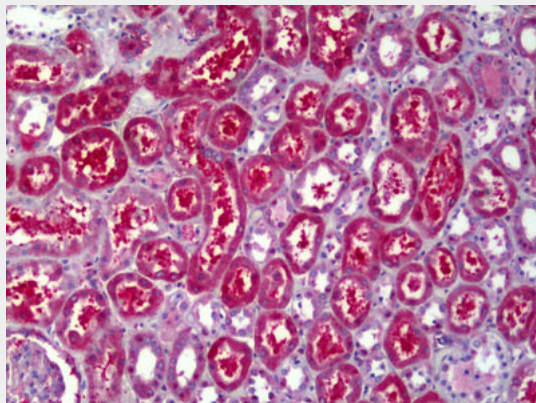
ATP6V1B2 Antibody (clone 2A5) - Protocols

Provided below are standard protocols that you may find useful for product applications.

- [Western Blot](#)
- [Blocking Peptides](#)
- [Dot Blot](#)
- [Immunohistochemistry](#)
- [Immunofluorescence](#)
- [Immunoprecipitation](#)
- [Flow Cytometry](#)
- [Cell Culture](#)

ATP6V1B2 Antibody (clone 2A5) - Images

Western blot of ATP6V1B2 expression in transfected 293T cell line by ATP6V1B2 monoclonal...



Anti-ATP6V1B2 antibody IHC of human kidney, tubules.

ATP6V1B2 Antibody (clone 2A5) - Background

Non-catalytic subunit of the peripheral V1 complex of vacuolar ATPase. V-ATPase is responsible for acidifying a variety of intracellular compartments in eukaryotic cells.

ATP6V1B2 Antibody (clone 2A5) - References

Nelson R.D., et al. Proc. Natl. Acad. Sci. U.S.A. 89:3541-3545(1992).
van Hille B., et al. Biochem. J. 303:191-198(1994).
Ota T., et al. Nat. Genet. 36:40-45(2004).
Mural R.J., et al. Submitted (SEP-2005) to the EMBL/GenBank/DDBJ databases.
Lee B.S., et al. J. Biol. Chem. 270:7320-7329(1995).