

GOB5 / CLCA1 Antibody (clone 1C4)
Mouse Monoclonal Antibody
Catalog # ALS14514**Specification**

GOB5 / CLCA1 Antibody (clone 1C4) - Product Information

Application	WB, IHC-P, E
Primary Accession	A8K7I4
Reactivity	Human
Host	Mouse
Clonality	Monoclonal
Calculated MW	100kDa KDa
Dilution	WB~~1:1000 IHC-P~~N/A E~~N/A

GOB5 / CLCA1 Antibody (clone 1C4) - Additional Information**Gene ID** 1179**Other Names**

Calcium-activated chloride channel regulator 1, 3.4.-., Calcium-activated chloride channel family member 1, hCLCA1, Calcium-activated chloride channel protein 1, CaCC-1, hCaCC-1, CLCA1, CACC1

Target/Specificity

Human CLCA1

Reconstitution & Storage

Short term 4°C, long term aliquot and store at -20°C, avoid freeze thaw cycles.

Precautions

GOB5 / CLCA1 Antibody (clone 1C4) is for research use only and not for use in diagnostic or therapeutic procedures.

GOB5 / CLCA1 Antibody (clone 1C4) - Protein Information**Name** CLCA1**Synonyms** CACC1**Function**

May be involved in mediating calcium-activated chloride conductance. May play critical roles in goblet cell metaplasia, mucus hypersecretion, cystic fibrosis and AHR. May be involved in the regulation of mucus production and/or secretion by goblet cells. Involved in the regulation of tissue inflammation in the innate immune response. May play a role as a tumor suppressor. Induces MUC5AC.

Cellular Location

Secreted, extracellular space. Cell membrane; Peripheral membrane protein; Extracellular side.
Note=Protein that remains attached to the plasma membrane appeared to be predominantly localized to microvilli

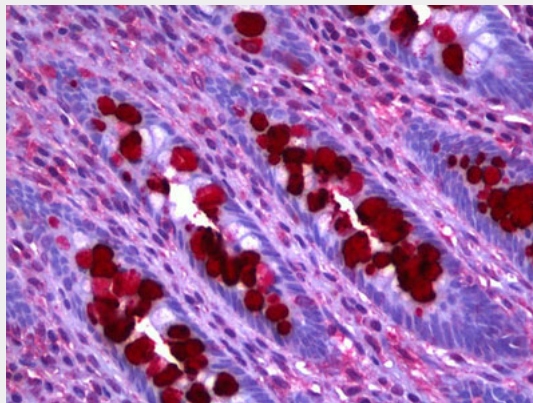
Tissue Location

Highly expressed in small intestine and colon namely in intestinal basal crypt epithelia and goblet cells, and appendix. Weakly expressed in uterus, testis and kidney. Expressed in the airways epithelium of both asthmatic and healthy patients Expressed in the bronchial epithelium, especially in mucus-producing goblet cells. Expressed in normal turbinate mucosa and nasal polyp Expressed in.

GOB5 / CLCA1 Antibody (clone 1C4) - Protocols

Provided below are standard protocols that you may find useful for product applications.

- [Western Blot](#)
- [Blocking Peptides](#)
- [Dot Blot](#)
- [Immunohistochemistry](#)
- [Immunofluorescence](#)
- [Immunoprecipitation](#)
- [Flow Cytometry](#)
- [Cell Culture](#)

GOB5 / CLCA1 Antibody (clone 1C4) - Images

Anti-CLCA1 antibody IHC of human colon, goblet cells.

GOB5 / CLCA1 Antibody (clone 1C4) - Background

May be involved in mediating calcium-activated chloride conductance. May play critical roles in goblet cell metaplasia, mucus hypersecretion, cystic fibrosis and AHR. May be involved in the regulation of mucus production and/or secretion by goblet cells. Involved in the regulation of tissue inflammation in the innate immune response. May play a role as a tumor suppressor. Induces MUC5AC.

GOB5 / CLCA1 Antibody (clone 1C4) - References

Gruber A.D., et al. Genomics 54:200-214(1998).
Agnel M., et al. FEBS Lett. 455:295-301(1999).

Ota T.,et al.Nat. Genet. 36:40-45(2004).

Gregory S.G.,et al.Nature 441:315-321(2006).

Mural R.J.,et al.Submitted (SEP-2005) to the EMBL/GenBank/DDBJ databases.